



Cat[®] 307.5

MINI HYDRAULIC EXCAVATOR

FEATURES:

The Cat[®] 307.5 Mini Excavator delivers maximum power and performance in a mini size to help you work in a wide range of applications.

ALL DAY COMFORT

- A sealed and pressurized cab is equipped with an improved air conditioning system, adjustable wrist rests and a suspension seat to help keep you working comfortably all day long.

EASY TO OPERATE

- Controls are easy to use and the intuitive Next Generation Monitor provides customizable machine operator preferences and easy to read machine information.

STICK STEER TRAVEL MODE

- Moving around the job site is even easier with the Cat Stick Steer option. Easily switch from traditional travel controls with levers and pedals to joystick controls with a push of a button. The benefit of less effort and improved control is in your hands!

BIG PERFORMANCE IN A MINI DESIGN

- Increased lifting, swinging, travel and multi-functioning performance helps you get the job done more efficiently, and dig-to-blade allows for easy clean up.

SAFETY ON THE JOB SITE

- Your safety is our top priority. The Cat Mini Excavator is designed to help keep you safe on the job. A back-up camera, courtesy work lights and a fluorescent retractable seat belt are just a few of the safety features we've built into the machine.

SIMPLE SERVICE FOR LESS DOWNTIME

- Maintenance is quick and easy on the Cat Mini Excavator. Routine check points are easy to access at ground level with grouped service points and robust service panels.

LOWER OPERATING COSTS

- Equipped with features such as auto idle, auto engine shutdown, and efficient hydraulics with a variable displacement pump, the Cat Mini Excavator was designed with reducing your operating costs in mind.

UNMATCHED DEALER SUPPORT

- Your Cat dealer is here to help you reach your business goals. From providing equipment solutions to operator training to service needs and beyond, your Cat dealer is ready to help.

Specifications

Engine

Engine Model	Cat C2.4 Turbo	
Rated Net Power @ 2,400 rpm		
ISO 9249/EEC 80/1269	41.7 kW	55.9 hp
Gross Power		
ISO 14396	43.2 kW	57.9 hp
Bore	87 mm	3.4 in
Stroke	102 mm	4.0 in
Displacement	2.43 L	148 in ³

Weights

Minimum Operating Weight with Cab*	7532 kg	16,605 lb
Maximum Operating Weight with Cab**	8233 kg	18,152 lb

*Minimum Weight is based on steel tracks, no counterweight, operator, full fuel tank, standard stick, blade and no bucket.

**Maximum Weight is based on steel tracks with rubber pads, counterweight, operator, full fuel tank, long stick, blade and no bucket.

Weight Increase from Minimum Configuration

Counterweight	250 kg	552 lb
Long Stick	66 kg	146 lb
Steel Tracks with Pads	300 kg	661 lb



307.5 Mini Hydraulic Excavator

Travel System

Travel Speed – High	5.0 km/h	3.1 mph
Travel Speed – Low	3.1 km/h	1.9 mph
Maximum Traction Force – High Speed	26.1 kN	5,856 lb
Maximum Traction Force – Low Speed	62.4 kN	14,035 lb
Ground Pressure – Minimum Weight	32.7 kPa	5 psi
Ground Pressure – Maximum Weight	35.7 kPa	5 psi
Gradeability (maximum)	30 degrees	

Service Refill Capacities

Cooling System	10.0 L	2.6 gal
Engine Oil	9.5 L	2.5 gal
Fuel Tank	145 L	38 gal
Hydraulic Tank	53 L	14 gal
Hydraulic System	104 L	27 gal

Hydraulic System

Load Sensing Hydraulics with Variable Displacement Piston Pump		
Pump Flow @ 2,400 rpm	167 L/min	44 gal/min
Operating Pressure – Equipment	285 bar	4,134 psi
Operating Pressure – Travel	285 bar	4,134 psi
Operating Pressure – Swing	250 bar	3,626 psi
Auxiliary Circuit – Primary		
Flow	131 L/min	35 gal/min
Pressure	285 bar	4,134 psi
Auxiliary Circuit – Secondary		
Flow	33 L/min	9 gal/min
Pressure	285 bar	4,134 psi
Digging Force – Stick (standard)	37.8 kN	8,504 lb
Digging Force – Stick (long)	33.7 kN	7,579 lb
Digging Force – Bucket	54.6 kN	12,272 lb

Swing System

Machine Swing Speed	10 rpm
---------------------	--------

Blade

Width	2280 mm	89.8 in
Height	431 mm	17 in

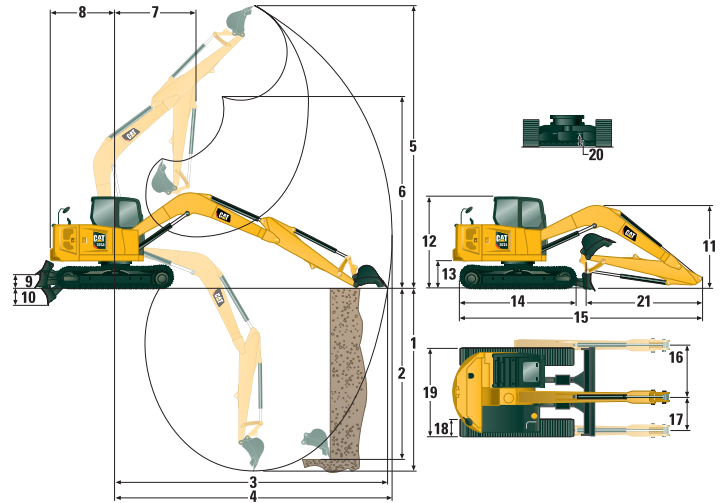
Certification – Cab

Roll Over Protective Structure (ROPS)	ISO 12117-2:2008
Tip Over Protective Structure (TOPS)	ISO 12117:1997
Top Guard	ISO 10262:1998 (Level II)

Sound

Operator Sound Pressure (ISO 6396:2008)	72 dB(A)
Average Exterior Sound Pressure (ISO 6395:2008)	98 dB(A)

• European Union Directive “2000/14/EC”



Dimensions

	Standard Stick	Long Stick
1 Dig Depth	4107 mm (161.7 in)	4649 mm (183.0 in)
2 Vertical Wall	3604 mm (141.9 in)	4120 mm (162.2 in)
3 Maximum Reach at Ground Level	6152 mm (242.2 in)	6671 mm (262.7 in)
4 Maximum Reach	6297 mm (247.9 in)	6805 mm (267.9 in)
5 Maximum Dig Height	7341 mm (289.0 in)	7758 mm (305.4 in)
6 Maximum Dump Clearance	5293 mm (208.4 in)	5710 mm (224.8 in)
7 Boom in Reach	1681 mm (66.2 in)	2250 mm (88.6 in)
8 Tail Swing		
with Counterweight	1995 mm (78.5 in)	1995 mm (78.5 in)
without Counterweight	1800 mm (70.9 in)	1800 mm (70.9 in)
9 Maximum Blade Height	363 mm (14.3 in)	363 mm (14.3 in)
10 Maximum Blade Depth	414 mm (16.3 in)	414 mm (16.3 in)
11 Transport Height	2558 mm (100.7 in)	2656 mm (104.6 in)
12 Cab Height	2514 mm (99.0 in)	2514 mm (99.0 in)
13 Swing Bearing Height	729 mm (28.7 in)	729 mm (28.7 in)
14 Overall Undercarriage Length	2880 mm (113.4 in)	2880 mm (113.4 in)
15 Overall Shipping Length	6144 mm (241.9 in)	6257 mm (246.3 in)
16 Boom Swing Right	0 degrees	0 degrees
17 Boom Swing Left	0 degrees	0 degrees
18 Track Belt/Shoe Width	450 mm (17.7 in)	450 mm (17.7 in)
19 Overall Track Width	2200 mm (86.6 in)	2200 mm (86.6 in)
Width over Upper House	2250 mm (88.6 in)	2250 mm (88.6 in)
20 Ground Clearance	370 mm (14.6 in)	370 mm (14.6 in)
21 Stick Length	1665 mm (65.6 in)	2208 mm (86.9 in)

307.5 Mini Hydraulic Excavator

Lift Capacities – Minimum Configuration*

Lift Point Height			3 m (9.8 ft)			4.5 m (14.8 ft)			Lift Point Radius (Maximum)			
			Over Front		Over Side	Over Front		Over Side	Over Front		Over Side	m (ft)
			Blade Down	Blade Up		Blade Down	Blade Up		Blade Down	Blade Up		
4.5 m (14.8 ft)	Standard Stick	kg (lb)	1907 (4,204)	1907 (4,204)	1915 (4,222)				941 (2,075)	941 (2,075)	941 (2,075)	4.41 (14.5)
	Long Stick	kg (lb)				1501 (3,309)	1501 (3,309)	1502 (3,311)	1136 (2,504)	1136 (2,504)	1136 (2,504)	5.03 (16.5)
3 m (9.8 ft)	Standard Stick	kg (lb)	2299 (5,068)	2299 (5,068)	2325 (5,126)	1788 (3,942)	1788 (3,942)	1799 (3,966)	884 (1,949)	884 (1,949)	884 (1,949)	5.17 (17.0)
	Long Stick	kg (lb)	1956 (4,312)	1956 (4,312)	1973 (4,350)	1594 (3,514)	1594 (3,514)	1602 (3,532)	1083 (2,388)	1083 (2,388)	1083 (2,388)	5.71 (18.7)
1.5 m (4.9 ft)	Standard Stick	kg (lb)	2898 (6,389)	2898 (6,389)	2949 (6,501)	1948 (4,295)	1948 (4,295)	1487 (3,278)	920 (2,028)	920 (2,028)	920 (2,028)	5.43 (17.8)
	Long Stick	kg (lb)	2620 (5,776)	2620 (5,776)	2664 (5,873)	1802 (3,973)	1802 (3,973)	1480 (3,263)	1121 (2,471)	1121 (2,471)	924 (2,037)	5.95 (19.5)
0 m (0 ft)	Standard Stick	kg (lb)	3059 (6,744)	3059 (6,744)	2531 (5,580)	1635 (3,605)	1634 (3,602)	1406 (3,100)	1056 (2,328)	1056 (2,328)	1056 (2,328)	5.27 (17.3)
	Long Stick	kg (lb)	2980 (6,570)	2980 (6,570)	2499 (5,509)	1602 (3,532)	1601 (3,530)	1371 (3,023)	1258 (2,773)	1258 (2,773)	928 (2,046)	5.80 (19.0)

*Minimum Weight includes steel tracks, no counterweight, operator, full fuel tank, standard stick, blade and no bucket.

Lift Capacities – Maximum Configuration**

Lift Point Height			3 m (9.8 ft)			4.5 m (14.8 ft)			Lift Point Radius (Maximum)			
			Over Front		Over Side	Over Front		Over Side	Over Front		Over Side	m (ft)
			Blade Down	Blade Up		Blade Down	Blade Up		Blade Down	Blade Up		
4.5 m (14.8 ft)	Standard Stick	kg (lb)	1910 (4,211)	1910 (4,211)	1918 (4,228)				939 (2,070)	939 (2,070)	939 (2,070)	4.43 (14.5)
	Long Stick	kg (lb)				1500 (3,307)	1500 (3,307)	1502 (3,311)	1134 (2,500)	1134 (2,500)	1134 (2,500)	5.05 (16.6)
3 m (9.8 ft)	Standard Stick	kg (lb)	2311 (5,095)	2311 (5,095)	2337 (5,152)	1791 (3,948)	1791 (3,948)	1802 (3,973)	884 (1,949)	884 (1,949)	884 (1,949)	5.18 (17.0)
	Long Stick	kg (lb)	1968 (4,339)	1968 (4,339)	1985 (4,376)	1597 (3,521)	1597 (3,521)	1606 (3,541)	1082 (2,385)	1082 (2,385)	1082 (2,385)	5.72 (18.8)
1.5 m (4.9 ft)	Standard Stick	kg (lb)	2907 (6,409)	2907 (6,409)	2959 (6,523)	1951 (4,301)	1951 (4,301)	1970 (4,343)	922 (2,033)	922 (2,033)	922 (2,033)	5.43 (17.8)
	Long Stick	kg (lb)	2632 (5,803)	2632 (5,803)	2676 (5,900)	1806 (3,982)	1806 (3,982)	1822 (4,017)	1123 (2,476)	1123 (2,476)	1123 (2,476)	5.95 (19.5)
0 m (0 ft)	Standard Stick	kg (lb)	3056 (6,737)	3056 (6,737)	3107 (6,850)	1987 (4,381)	1987 (4,381)	1637 (3,609)	1060 (2,337)	1060 (2,337)	1060 (2,337)	5.26 (17.2)
	Long Stick	kg (lb)	2981 (6,572)	2981 (6,572)	3034 (6,689)	1930 (4,255)	1930 (4,255)	1602 (3,532)	1262 (2,782)	1262 (2,782)	1262 (2,782)	5.79 (19.0)

**Maximum Weight includes steel tracks with rubber pads, counterweight, operator, full fuel tank, long stick, blade and no bucket.

307.5 Mini Hydraulic Excavator

EQUIPMENT

ENGINE

- Cat C2.4 Diesel Engine (U.S. EPA Tier 4 Final/ EU Stage V) – Electronic Engine, Turbo, Diesel Particulate Filter (DPF)
- Automatic Engine Idle
- Automatic Engine Shutdown
- Automatic Swing Brake
- Automatic Two Speed Travel
- Fuel Water Separator with Indicator
- Radial Seal – Double Element Air Filter
- Extended Life Coolant, -37° C (-35° F)

HYDRAULICS

- Smart Tech Electronic Pump
- Variable Displacement Piston Pump
- Load Sensing/Flow Sharing Hydraulics
- Power On Demand
- Hydraulic Temperature Monitoring
- Certified Accumulator
- Hydro Advanced Hydraulic Oil

OPERATOR ENVIRONMENT

- Sealed and Pressurized Cab
- Operator Sound Pressure 72 dB(A) ISO 6396
- Stick Steer Mode
- Travel Cruise Control
- Control Pattern Changer
- Adjustable Wrist Rests
- Molded Footrests
- Removable, Washable Floor Mat
- Travel Pedals and Hand Levers

- Cat Key with Passcode Option
- HVAC with Automatic Temperature Control
- Hydraulic Lockout Controls
- Integrated Lower Front Window
- Assisted Front Window Overhead Storage
- Rear Window Emergency Exit
- Fabric, High Back, Suspension Seat
- Retractable Seat Belt (75 mm/3 in)
- Coat Hook
- Cup Holder
- LED Interior Light
- Literature Holder
- 12V Power Socket
- Radio – Bluetooth®, USB, Auxiliary, Microphone
- Skylight
- Mounting Bosses for Top and Front Guards
- ROPS – ISO 12117-2:2008
- TOPS – ISO 12117:1997
- Top Guard – ISO 10262:1998 (Level II)
- Color LCD Monitor
 - Fuel Level and Coolant Temperature Gauges
 - Maintenance and Machine Monitoring
 - Performance and Machine Adjustments
 - Numeric Security Code
 - Multiple Languages
 - Camera Ready
 - Hour Meter with Wake Up Switch
 - Jog Dial Control Interface

UNDERCARRIAGE

- Greased and Lubricated Track
- Hydraulic Track Adjusters
- Tie Down Eyes on Track Frame
- Dozer Blade
- Dozer Float
- Bolt-on, Reversible Wear Edge
- Steel Tracks (450 mm/17.7 in wide)

BOOM, STICK AND LINKAGES

- One Piece Boom (3700 mm/145.7 in)
- Standard Stick (1665 mm/65.6 in) or Long Stick (2200 mm/86.6 in)
- Front Shovel Capable (Pin-On/ Manual Coupler/Hydraulic Coupler – not available in all regions)
- Thumb Ready (not available in all regions)
- Certified Lifting Eye (not available in all regions)

ELECTRICAL

- 12 Volt Electrical System
- 90 Ampere Alternator
- 850 CCA Maintenance Free Battery
- Circuit Breaker
- Ignition Key Stop Switch
- Signaling/Warning Horn
- Product Link™ Elite Lite (regulations apply)
- Travel Alarm

OPTIONAL EQUIPMENT

OPERATOR ENVIRONMENT

- Rain Visor
- Air Suspension Heated Seat

ELECTRICAL

- Rearview Camera
- Rotating Beacon

OTHER

- Attachments including Buckets, Augers and Hammers
- Steel Track with Rubber Pads
- Wide Steel Tracks (600 mm/23.6 in)
- 2nd Auxiliary Hydraulic Lines
- Boom and Stick Hose Burst Check Valves
- Bucket Linkage with Lift Eye
- Track Guides
- Water Jacket Heater
- Refueling Pump
- Cab Guarding

For more complete information on Cat products, dealer services, and industry solutions, visit us on the web at www.cat.com

© 2018 Caterpillar
All rights reserved

Materials and specifications are subject to change without notice. Featured machines in photos may include additional equipment. See your Cat dealer for available options.

CAT, CATERPILLAR, SAFETY.CAT.COM, their respective logos, "Caterpillar Yellow" and the "Power Edge" trade dress, as well as corporate and product identity used herein, are trademarks of Caterpillar and may not be used without permission.

AEHQ8158 (09-2018)
(North America and Europe)

