



Cat[®] B Hammers

SKID STEER LOADERS
MULTI TERRAIN LOADERS
COMPACT TRACK LOADERS
MINI EXCAVATORS
BACKHOE LOADERS

Cat[®] B Hammers are suitable for use in a wide range of construction and general demolition applications – such as breaking concrete sidewalks and driveways, pavement, roads, masonry, site prep and landscaping, and breaking frozen ground for utility repairs. Each model of B Hammer is available in either silenced or non-silenced configurations. The silenced version is identified by the 's' suffix, for example B6s.

Silenced vs. Non-silenced

- Silenced hammers fully enclose and isolation mount the power cell between urethane and nylon buffers, thus limiting noise and damping vibration to the hammer and machine.
- Non-silenced hammers rigidly mount the power cell between two metal frames. This open configuration allows better access for serviceability.

Flat top/top-mount style

- Flat top/top-mount style provides a larger work area and excellent operator visibility with a common footprint and hole pattern for optimum versatility.
- Top-mount style increases impact power by keeping breaker force and stick force in line. A top-mount bracket will transfer back significantly less recoil and bending stress into the end of the stick, resulting in reduced impact on machine structures.
- Full complement of mounting brackets is available to suit coupler or pin-on preference.
- Flat top hammer bracket design features enhanced hose routing and improved ingress/egress with new bolt-on step and updated central step.
- Brackets are compatible with H Hammers (H35s-H95s) and the CVP16 and CVP40 Vibratory Plate Compactors.

Gas fired design

- Gas fired design delivers consistently high production over time making the breaker reliable in applications such as concrete, asphalt, rock and light trenching.

Internal Control Valve

- Internal Control Valve (ICV) maintains maximum hydraulic pressure to ensure breaker delivers all blows at full power with no residual blows.
- By controlling smooth movement of the piston, it can immediately stop the breaker when oil flow ceases.

Ergonomically positioned hydraulic lines

- Ergonomically positioned hydraulic lines are designed to optimize serviceability, are easily accessible and require no special tools.
- Hydraulic lines and back head pressure can be checked and charged while breaker is mounted to machine, allowing quick monitoring of breaker's condition.

Slip fit bushings

- Slip fit bushings are field replaceable and easy to maintain due to one locking pin, extending wear life and reducing owning and operating costs.
- Upper bushing rotates 360°, lower bushing has two positions and can be rotated 90° to minimize play between tool and bushing, extending bush life cycle.

Standard items included with hammer

- Tool box with service items comes standard to help maintain the hammer. Items included are: nitrogen charge gauge, hammer paste tube, tool pin, retention spring pins and other key service items.
- Two tools, cone and crosscut/transverse chisel.



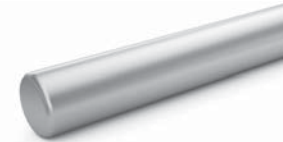
Hammer Tools



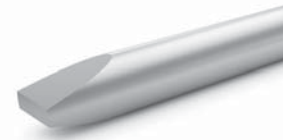
Moil/Pyramid Tool is a general purpose tool where the point improves speed of penetration. For use on pavement, concrete, bed rock, hard rock and trenching.



Cone Tool is a multi-use tool that can make circle holes in soft material. Point improves speed of penetration but there is no control of fracture direction. For use on concrete, bed rock and hard rock.



Blunt Tool shatters with vibration instead of penetration. For use on concrete, bed rock, trenching, operating on slopes and cutting lines.



Chisel Tool (cross cut/transverse and parallel/in-line along machine driving direction) aids controlled and accurate fracture line. For use on pavement, concrete, bed rock, trenching, operating on slopes and cutting lines.

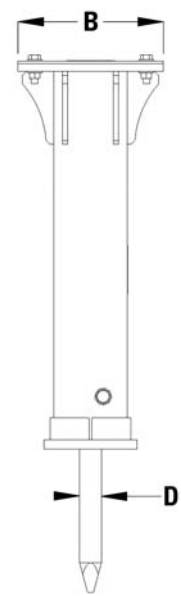
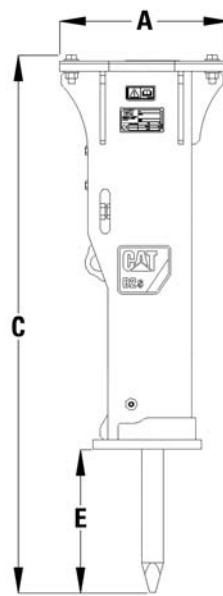
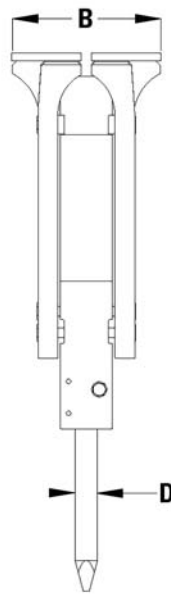
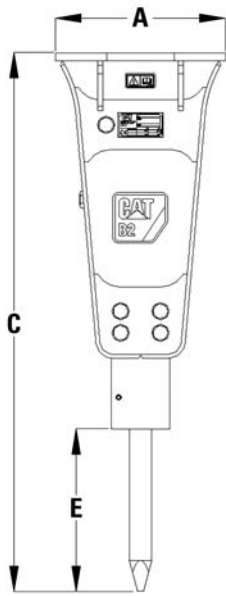
Compatibility

Machines	Model
Mini Hydraulic Excavators	
300.9	B1 Pin on
301.4-301.8	B1/B1s
301.7-303.5	B2/B2s
302.5-306	B4/B4s
304-309	B6/B6s
306-309	B8/B8s

Machines	Model
Compact Loaders	
216-299	B4/B4s, B6/B6s, B8/B8s
Backhoe Loaders	
415-444	B6/B6s, B8/B8s



Specifications



B2 (Non-Silenced) Hammer shown

B2s (Silenced) Hammer shown

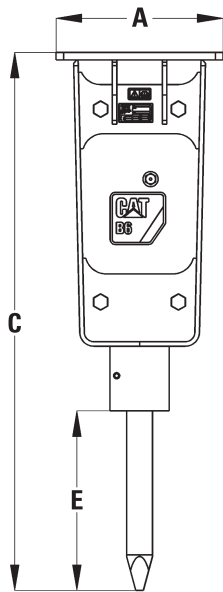
			B1 Pin on		B1		B1s	
A Width	mm (in)		208	(8.2)	340	(13.4)	340	(13.4)
B Length	mm (in)		185	(7.3)	300	(11.8)	300	(11.8)
C Height	mm (in)		958	(37.7)	948	(37.3)	977	(38.4)
D Tool diameter	mm (in)		40	(1.6)	40	(1.6)	40	(1.6)
E Tool working length	mm (in)		210	(8.3)	280	(11.0)	250	(9.8)
Impact frequency	BPM		800-1,400		800-1,400		800-1,400	
Minimum carrier weight	kg (lb)		1143	(1,983)	1400	(3,085)	1400	(3,085)
Optimal hydraulic flow	L/min (gpm)		15-25	(4-7)	15-25	(4-7)	15-25	(4-7)
Operating weight	kg (lb)		73.6	(162)	83.1	(183)	86.3	(190)
Operating pressure	bar (psi)		88	(1,276)	88	(1,276)	88	(1,276)

			B2		B2s		B4		B4s	
A Width	mm (in)		340	(13.4)	340	(13.4)	340	(13.4)	340	(13.4)
B Length	mm (in)		300	(11.8)	300	(11.8)	300	(11.8)	300	(11.8)
C Height	mm (in)		1,080	(42.5)	1091	(43.0)	1190	(46.9)	1195	(47)
D Tool diameter	mm (in)		45	(1.8)	45	(1.8)	53	(2.1)	53	(2.1)
E Tool working length	mm (in)		326	(12.8)	296	(11.7)	360	(14.2)	330	(13)
Impact frequency	BPM		700-1,200		700-1,200		600-1,100		600-1,100	
Minimum carrier weight	kg (lb)		1700	(3,747)	1700	(3,747)	2200	(4,849)	2200	(4,849)
Optimal hydraulic flow	L/min (gpm)		20-30	(5-8)	20-30	(5-8)	25-50	(7-13)	25-50	(7-13)
Operating weight	kg (lb)		114.7	(253)	116.8	(257)	159	(351)	162	(357)
Operating pressure	bar (psi)		88	(1,276)	88	(1,276)	103	(1,487)	103	(1,487)

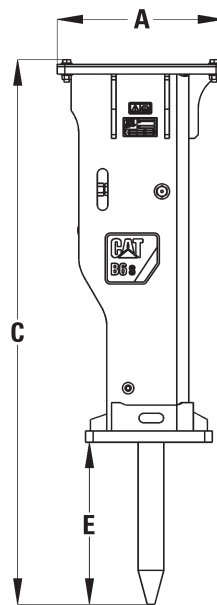
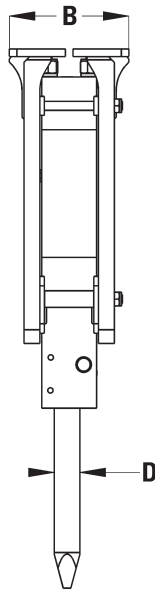
(continued on next page)

Cat® B Hammers

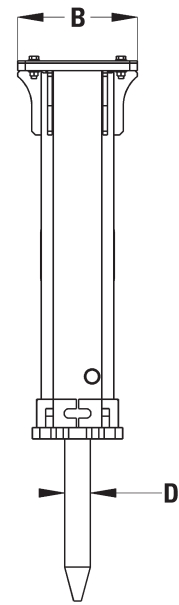
Specifications (continued)



B6 (Non-Silenced) Hammer shown



B6s (Silenced) Hammer shown



			B6		B6s		B8		B8s	
A Width	mm (in)		440	(17.3)	440	(17.3)	440	(17.3)	440	(17.3)
B Length	mm (in)		316	(12.4)	316	(12.4)	316	(12.4)	316	(12.4)
C Height	mm (in)		1375	(54.1)	1370	(53.9)	1413	(55.6)	1402	(55.2)
D Tool diameter	mm (in)		68	(2.7)	68	(2.7)	75	(3)	75	(3)
E Tool working length	mm (in)		427	(16.8)	377	(14.8)	408	(16.1)	358	(14.1)
Impact frequency	BPM		500-900		500-900		400-800		400-800	
Minimum carrier weight	kg (lb)		3999	(8,816)	3999	(8,816)	6998	(15,428)	6998	(15,428)
Optimal hydraulic flow	L/min (gpm)		40-70	(11-19)	40-70	(11-19)	50-90	(13-24)	50-90	(13-24)
Operating weight	kg (lb)		259	(571)	277	(611)	350	(772)	344	(758)
Operating pressure	bar (psi)		108	(1,566)	108	(1,566)	95	(1,378)	95	(1,378)

For more complete information on Cat products, dealer services, and industry solutions, visit us on the web at www.cat.com

AEHQ8138-01 (07-2019)
Replaces AEHQ8138

© 2019 Caterpillar
All rights reserved

Materials and specifications are subject to change without notice. Featured machines in photos may include additional equipment. See your Cat dealer for available options.

CAT, CATERPILLAR, LET'S DO THE WORK, their respective logos, "Caterpillar Yellow," the "Power Edge" and Cat "Modern Hex" trade dress as well as corporate and product identity used herein, are trademarks of Caterpillar and may not be used without permission.

