

352F XE

Hydraulic Excavator



Engine

| | |
|-------------------|-----------------|
| Engine Model | Cat® C13 ACERT™ |
| Power – ISO 14396 | 317 kW (431 PS) |
| Power – ISO 9249 | 311 kW (423 PS) |

Drive

| | |
|----------------------|----------|
| Maximum Travel Speed | 4.7 km/h |
| Maximum Drawbar Pull | 335 kN |

Weights

| | |
|----------------|-----------|
| Minimum Weight | 51 120 kg |
| Maximum Weight | 53 790 kg |

The 352F XE is the latest 52-ton machine from Caterpillar that will significantly lower your owning and operating costs.

Unlike models from other manufacturers, the 352F XE is loaded with productivity boosting technology that will help improve your bottom line even more. Technologies like the new Cat Production Measurement Payload system, the proven Cat Grade Control Depth and Slope system, and Product Link™ come standard on this machine – all to help you easily do work more quickly and efficiently.

So if you are looking for the absolute maximum level of productivity and efficiency from a 52-ton machine, look no further than the 352F XE. It will make you more money than any other brand bar none.

Contents

| | |
|--|----|
| Equipping Every Customer for Success | 4 |
| Reliable and Productive | 6 |
| Fuel Efficient | 8 |
| Easy to Operate | 10 |
| Durable Structures | 12 |
| Durable Linkages | 13 |
| Versatile | 14 |
| Integrated Technologies | 16 |
| Serviceable | 18 |
| Safe Work Environment | 19 |
| Sustainable | 20 |
| Complete Customer Care | 20 |
| Specifications | 21 |
| Standard Equipment | 33 |
| Optional Equipment | 34 |
| Notes | 35 |





Equipping Every Customer for Success

Building products just for you and your type of work





Understanding your needs and requirements leads us to developing innovative products – products that help you win in a competitive environment. The 352F XE is the latest example of such an innovative product. This excavator is built for those of you looking for the highest level of productivity because you get paid by the job (or unit of work). When you see XE on a Cat machine, you can count on it being the most technologically advanced, fuel-efficient machine capable of working in all applications and material types.

Caterpillar also offers a traditional 352F model. This machine is built for those of you who also get paid by the job (or unit of work) and are looking for a high level of productivity. Even though it isn't equipped with all the technology of the 352F XE, it still provides excellent fuel efficiency and productivity as compared to competitive offerings.

So when you think of XE, think of the following attributes:

- Reliable, durable, and rebuildable
- Low cost per unit of work
- Breakthrough and innovative
- Maximum efficiency

When you think of our traditional model, think of these attributes:

- Reliable, durable, and rebuildable
- Low cost per unit of work
- Proven
- Highly efficient

No matter which Cat model you choose, you can depend on it being a quality-made machine backed by the world's finest product support.



Reliable and Productive

Power to move your material with speed and precision

Powerful, Efficient Design

When it comes to moving heavy material quickly and efficiently, you need hydraulic horsepower – the type of ground-breaking power the 352F XE can deliver. Major hydraulic components like pumps and valves are located close together so shorter tubes and lines can be used. This design leads to less friction loss, reduced pressure drops, and more power to the ground for the work you need to get done.

The heavy lift mode increases machine system pressure to improve lift – a nice benefit in certain situations. Heavy lift mode also reduces engine speed and pump flow in order to improve controllability.

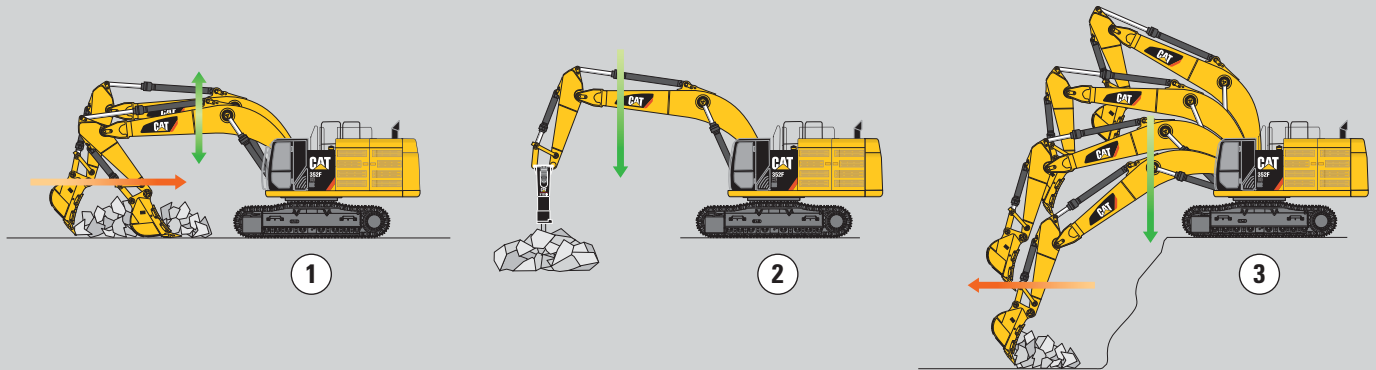
Our Smart Valve Is Smart for You

Think of the ACS valve as the “brain” of the system – one that independently controls machine functions and directs hydraulic energy where you need it precisely when you need it.

Because the ACS valve is fully integrated with the pump, you will experience the same extraordinary control, hydraulic power, and lift capacity that you get from our traditional valve machines with the added benefit of dramatically reduced fuel consumption.

SmartBoom™

Reduces Stress and Vibrations Transmitted to the Machine



Rock Scraping ①

Scraping rock and finishing work is easy and fast. SmartBoom simplifies the task and allows the operator to fully concentrate on the stick and bucket while the boom freely goes up and down without using pump flow.

Hammer Work ②

It has never been this productive and operator-friendly. The front parts automatically follow the hammer while penetrating the rock. Blank shots or excessive force on the hammer are avoided, resulting in longer life for the hammer and machine. Similar advantages are applicable when using vibratory plates.

Truck Loading ③

Loading trucks from a bench is more productive and fuel efficient as the return cycle is reduced while the boom down function does not require pump flow.

Auxiliary Hydraulics for Added Versatility

Auxiliary hydraulics give you greater tool versatility so you can take on more work with just one machine, and there are several options from which you can choose. A quick coupler circuit is just one example. When paired with our tool control system that remembers the pressures and flows for up to 10 attachments, the quick coupler allows you to switch from one tool to another to get back to making money in a matter of minutes.

Fuel Efficient

Powerful and fuel efficient to meet your expectations



A Unique Emissions Solution

The Cat C13 ACERT engine meets today's EU Stage IV emission standards. It provides plenty of power for the work you do consuming only the necessary amount of fuel to do it – all to help keep your owning and operating costs to an absolute minimum.



Fuel-Saving Features

Two built-in fuel-saving features are on-demand engine power and engine idle shutdown. On-demand engine power keeps engine speed low during light loading and adjusts speed up when it senses something heavier out front. Engine idle shutdown automatically shuts the engine off when it's been idling for more than a specified amount of time. Both will help you save fuel, reduce emissions, and extend your service intervals.

Three power modes – high power, standard power, and eco mode – help you actively manage fuel consumption. Simply change between modes through the console switch panel to meet the needs for the job in front of you.

Biodiesel Not a Problem

The C13 ACERT engine can run on up to B20 biodiesel fuel that meets ASTM 6751 standards – all to give you more potential fuel-saving flexibility.

Proven Technology

Every Stage IV ACERT engine is equipped with a combination of proven electronic, fuel, air, and aftertreatment components. Applying these time-tested technologies lets us meet your high expectations for productivity, fuel efficiency, reliability, and service life.

The right technologies fine-tuned for the right applications result in:

- **Improved Fuel Efficiency** over Stage IIIB product, including Diesel Exhaust Fluid (DEF) consumption.
- **High Performance** across a variety of applications.
- **Enhanced Reliability** through commonality and simplicity of design.
- **Maximized Uptime and Reduced Cost** with world-class Cat dealer support.
- **Minimized Impact on Emission Systems** – with no operator interaction required.
- **Durability** with long service life.
- **Better Fuel Economy** with minimized maintenance costs.
- **Same Great Power and Response.**

Easy to Operate

Comfort and convenience to keep you productive all shift long



Safe and Quiet Cab

The ROPS-certified cab contributes to your comfort thanks to special viscous mounts and special roof lining and sealing, that limit vibration and unnecessary sound. Operators will enjoy the quietness and comfort of the all new cab.

Excellent Ergonomics

Wide seats with air suspension and heat/cooling options, include a reclining back, upper and lower slide adjustments, and height and tilt angle adjustments to meet your needs for maximum comfort.

The fully automatic climate control system keeps operators comfortable and productive all day long in either hot or cold weather.

Storage spaces are located in the front, rear, and side consoles of the cab. A drink holder accommodates a large mug, and a shelf behind the seat stores large lunch or toolboxes.

Power supply sockets are available for charging your electronic devices like an MP3 player, a cell phone, or even a tablet.

Controls Just for You

The right and left joystick consoles can be adjusted to improve your comfort and productivity during the course of a day. The right joystick features a button that will reduce engine speed when you are not working to help save fuel. Touch it once and speed reduces; touch it again and speed increases for normal operation.



Easy to Navigate Monitor

The new LCD monitor is easy to see and navigate. Not only can it memorize up to 10 different work tools, it's also programmable in up to 42 languages to meet today's diverse workforce. The monitor clearly displays critical information you need to operate efficiently and effectively. Plus it projects the image from the standard rearview camera to help you see what's going on around you so you can stay safely focused on the job at hand.



Durable Structures

Designed to work in your tough, heavy-duty applications

Robust Frames

The 352F XE is a well-built machine designed to give you a very long service life. The upper frame has mountings made specifically to support the heavy-duty cab; it's also reinforced around areas that take on a lot of stress like the boom foot, skirt, and counterweight removal system. Massive bolts are used to attach the track frames to the body, and additional bolts are used to increase the machine's digging force, which leads to more productivity for you.

Stable Undercarriage

The 352F XE's long variable gauge undercarriage contributes significantly to its outstanding stability and durability.

Track shoes, links, rollers, idlers, and final drives are all built with long-lasting, high-tensile-strength steel. Cat Grease Lubricated Track 4 (GLT4) track link protects moving parts by keeping water, debris, and dust out and grease sealed in, which delivers longer wear life and reduced noise when traveling. Cat Positive Pin Retention 2 (PPR2) prevents looseness of the track pin in the track link, reduces stress concentrations, and eliminates pin walking for increased service life.

Optional guide guards help maintain track alignment to improve the machine's overall performance – whether you're traveling on a flat, heavy bed of rock or a steep, wet field of mud.

Great Weight

Whether you are loading trucks or picking pipe, a 9.0 mt counterweight gives you plenty of stability.

Durable Linkages

Options to take on your up-close and far-out work



Built to Last

The 352F XE is offered with a range of booms and sticks. Each is built with internal baffle plates and stress-relieved for added durability, and each undergoes ultrasound inspection to ensure quality and reliability. Large box-section structures with thick, multi-plate fabrications, castings, and forgings are used in high-stress areas such as the boom nose, boom foot, boom cylinder, and stick foot to improve durability. Also, the boom nose pin retention method is a captured flag design for enhanced durability.

Types and Sizes for Every Job

Heavy Duty 6.9 m reach boom and sticks (3.35 m, 2.9 m) offer you excellent all-around versatility for general excavation work like multipurpose digging and loading.

Mass Excavation (ME) 6.55 m boom and sticks (3.0 m, 2.5 m) offer you enhanced performance in heavy-duty material. They provide higher digging forces due to special boom and stick geometry, and bucket linkage and cylinders are built for greater durability.

Sticks are matched to the booms. Longer sticks are better when you need to dig deep or load trucks. Shorter sticks provide greater breakout force.

Pins

All front linkage pins have thick chrome plating, giving them high wear resistance. Each pin diameter is made to distribute the shear and bending loads associated with the stick and to help ensure long pin, boom and stick life.



Talk to your Cat dealer to pick the best front linkage options for your applications.

Versatile

Do more jobs with one machine





Get the Most from One Machine

The 352F XE is a versatile machine that packs a lot of performance into a small package. You can easily expand that performance by utilizing a variety of attachments offered by Cat Work Tools.

Change Jobs Quickly

Cat quick couplers bring the ability to quickly change attachments and switch from job to job. The Cat Universal coupler is the secure way to decrease downtime and increase job site flexibility and overall productivity.

Dig, Rip and Load

A wide range of buckets dig everything from basic top soil to extreme, harsh material like ore and high quartzite granite. Rip through rock as an alternative to blasting in quarries. High-capacity buckets load trucks in a minimum number of passes for maximum productivity.

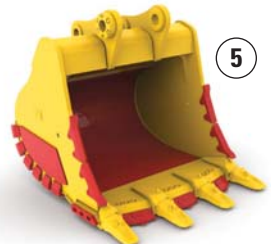
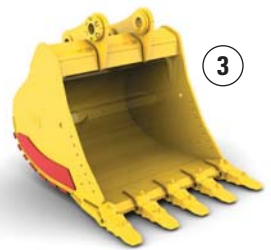
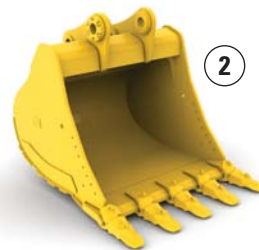
Break, Demolish and Scrap

A hydraulic hammer ably equips your machine for breaking rock in quarries. It will also make taking down bridge pillars and heavily reinforced concrete on road demolition jobs no problem.

Multi-processor and pulverizer attachments make your machine ideal for demolition jobs and processing the resulting debris. Shears with 360° rotation mount to the machine for processing scrap steel and metal.

Set Up Your Machine for Profitability

Your Cat dealer can install hydraulic kits to properly operate all Cat Work Tool attachments, maximizing the machine's uptime and your profit.



1) Universal Quick Coupler 2) General Duty (GD)
3) Heavy Duty (HD) 4) Severe Duty (SD) 5) Extreme Duty (XD)

Integrated Technologies

Monitor, manage, and enhance job site operations



Cat Connect makes smart use of technology and services to improve your job site efficiency. Using the data from technology-equipped machines, you'll get more information and insight into your equipment and operations than ever before.

Cat Connect technologies offer improvements in these key areas:



EQUIPMENT
MANAGEMENT

Equipment Management – increase uptime and reduce operating costs.



PRODUCTIVITY

Productivity – monitor production and manage job site efficiency.



SAFETY

Safety – enhance job site awareness to keep your people and equipment safe.

PAYLOAD Technologies

Payload technologies accurately measure material being loaded or hauled. Payload data is shared with operators in real time to improve productivity, reduce overloading, and record progress.

Cat Production Measurement

Cat Production Measurement brings payload weighing to the cab, enabling operators to weigh loads “on the go.” Loads are weighed as the boom swings with no interruptions in the loading cycle, improving loading speed and efficiency. Operators can view load weights on the integrated display and know precisely how much material is in the bucket and when trucks are filled to target payload. Instant feedback gives operators the confidence to work more effectively, maximizing the potential of the entire fleet. Site managers can wirelessly access data via the VisionLink® web portal to measure production and monitor efficiency.



GRADE Technologies

Grade technologies combine digital design data and in-cab guidance to help you reach target grade quickly and accurately with minimal staking and checking. That means you'll be more productive, complete jobs faster in fewer passes using less fuel at a lower cost.



Cat Grade Control Depth and Slope

The factory-integrated Cat Grade Control system delivers 2D bucket tip elevation guidance to the cab to help operators create precise planes and slopes. Real-time bucket tip elevation guidance on the standard cab monitor indicates how much to cut or fill. Fast response sensors deliver immediate feedback, while optional integrated joystick buttons help operators make quick adjustments to maintain grade. Built-in alerts can be set to warn the operator if the linkage or bucket approaches a predefined elevation or depth such as when working in areas with low ceilings or digging near water lines. Staking and checking is minimized, which reduces ground crews and enhances job site safety.

Works best in simple 2D applications such as digging trenches and basements or grading steep embankments.

Cat AccuGrade™

The dealer-installed AccuGrade system uses a dedicated monitor with a digital design plan for 3D bucket tip positioning and elevation guidance. AccuGrade indicates precisely where to work and how much to cut or fill – eliminating staking and checking.

Plug and play capability on the 352F XE simplifies upgrading. Choose from satellite (GNSS) or total station (UTS) control for large projects with complex designs.

LINK Technologies

LINK technologies like Product Link are deeply integrated into your machine and wirelessly communicates key information, including location, hours, fuel usage, idle time and event codes.

Product Link/VisionLink

Easy access to Product Link data via the online VisionLink user interface can help you see how your machine or fleet is performing. You can use this information to make timely, fact-based decisions that can boost job site efficiency and productivity and lower costs.



Ground-Level Access

You can reach most routine maintenance items like fuel and oil filters, fluid taps, and grease points from the safety and convenience of ground level. Not only do compartments feature wide service doors designed to help prevent debris entry, but they also securely latch in place to help make your service work simpler.



Serviceable

Designed to make your maintenance quick and easy

Quick and Convenient Fluids Service

The fuel tank's drain tube makes it easy and simple for you to remove water and sediment during routine maintenance. Plus an integrated fuel level indicator pops up to help you reduce the possibility of fuel tank overfilling.

A Cool Design

The unique cooling package includes a fuel-saving variable-speed fan and a radiator and AC condenser mounted side by side to help prevent plugging. Wider clearance between the two make blowing off debris easy for you, which can help improve your machine's reliability and performance.



A Fresh Idea

When you select ventilation inside the cab, outside air enters through the fresh air filter. The filter is conveniently located on the side of the cab to make it easy to reach and replace, and it is protected by a lockable door that can be opened with the engine key.

Safe Work Environment

Features to help protect you day in and day out



A Safe, Quiet Cab

The ROPS-certified cab provides you with a safe working environment. It also contributes to your comfort because it's attached to a reinforced frame with special viscous mounts that limit vibration and unnecessary sound. Add in special roof lining and sealing and you have a cab that's as quiet inside as any of today's highway trucks.

Optional Falling Object Guards (FOGS) further protect you from debris coming to the cab.

Secure Contact Points

Multiple large steps get you into the cab as well as a leg up to the compartments. Extended hand and guard rails allow you to safely climb to the upper deck. Anti-skid plates reduce your slipping hazards in all types of weather conditions, and they can be removed for cleaning.

Great Views

Ample glass coupled with the standard parallel wiper system, gives you excellent visibility out front and to the side, and the standard rearview camera gives you a clear field of view behind the machine through the cab monitor.

Smart Lighting

Halogen lights provide plenty of illumination, and the cab and boom lights can be programmed to stay on for up to 90 seconds after the engine has been turned off to help you safely exit the machine.





Complete Customer Care

Unmatched support makes the difference

Sustainable Generations ahead in every way

- The C13 ACERT engine meets Stage IV emission standards.
- The engine can run on either ultra-low-sulfur diesel (ULSD) fuel with 10 ppm of sulfur or less or biodiesel (up to B20) fuel blended with ULSD.
- An overfill fuel indicator rises when the tank is full to help the operator avoid spilling.
- Quick fill ports with connectors ensure fast, easy, and secure changing of engine and hydraulic oil.
- The machine is built to be rebuilt with major structures and components remanufactured to reduce waste and replacement costs.
- The 352F XE is an efficient, productive machine that's designed to conserve our natural resources for generations ahead.

Worldwide Parts Availability

Cat dealers utilize a worldwide parts network to maximize your machines' uptime. Plus they can help you save money with Cat remanufactured components.

Financial Options Just for You

Consider financing options and day-to-day operating costs. Look at dealer services that can be included in the machine's cost to yield lower owning and operating costs over time.

What's Best for You Today...and Tomorrow

Repair, rebuild, or replace? Your Cat dealer can help you evaluate the cost involved so you can make the best choice for your business.



352F XE Hydraulic Excavator Specifications

Engine

| | |
|--------------------------|-----------------|
| Engine Model | Cat C13 ACERT |
| Gross Power – SAE J1995 | 322 kW (438 PS) |
| Engine Power – ISO 14396 | 317 kW (431 PS) |
| Net Power – ISO 9249 | 311 kW (423 PS) |
| Bore | 130 mm |
| Stroke | 157 mm |
| Displacement | 12.5 L |

Hydraulic System

| | |
|--|------------|
| Main System – Maximum Flow (total) | 750 L/min |
| Swing System – Maximum Flow | 375 L/min |
| Maximum Pressure – Equipment | 35 000 kPa |
| Maximum Pressure – Equipment (lift mode) | 38 000 kPa |
| Maximum Pressure – Travel | 35 000 kPa |
| Maximum Pressure – Swing | 27 500 kPa |
| High Pressure Circuit – Maximum Flow | 300 L/min |
| Medium Pressure Circuit – Maximum Flow | 44 L/min |
| Pilot System – Maximum Flow | 26 L/min |
| Pilot System – Maximum Pressure | 4120 kPa |
| Boom Cylinder – Bore | 170 mm |
| Boom Cylinder – Stroke | 1524 mm |
| Stick Cylinder – Bore | 190 mm |
| Stick Cylinder – Stroke | 1758 mm |
| TB Bucket Cylinder – Bore | 160 mm |
| TB Bucket Cylinder – Stroke | 1356 mm |
| UB Bucket Cylinder – Bore | 170 mm |
| UB Bucket Cylinder – Stroke | 1396 mm |

Drive

| | |
|----------------------|----------|
| Gradeability | 30°/70% |
| Maximum Travel Speed | 4.7 km/h |
| Maximum Drawbar Pull | 335 kN |

Swing Mechanism

| | |
|--------------|------------|
| Swing Speed | 8.5 rpm |
| Swing Torque | 148.5 kN·m |

Service Refill Capacities

| | |
|-----------------------------------|-------|
| Fuel Tank Capacity | 720 L |
| Cooling System | 50 L |
| Engine Oil (with filter) | 38 L |
| Swing Drive (each) | 10 L |
| Final Drive (each) | 15 L |
| Hydraulic System (including tank) | 570 L |
| Hydraulic Tank | 407 L |
| DEF Tank | 41 L |

Track

| | |
|---------------------------------------|-----------|
| Number of Shoes (each side) | 52 pieces |
| Number of Track Rollers (each side) | 9 pieces |
| Number of Carrier Rollers (each side) | 3 pieces |

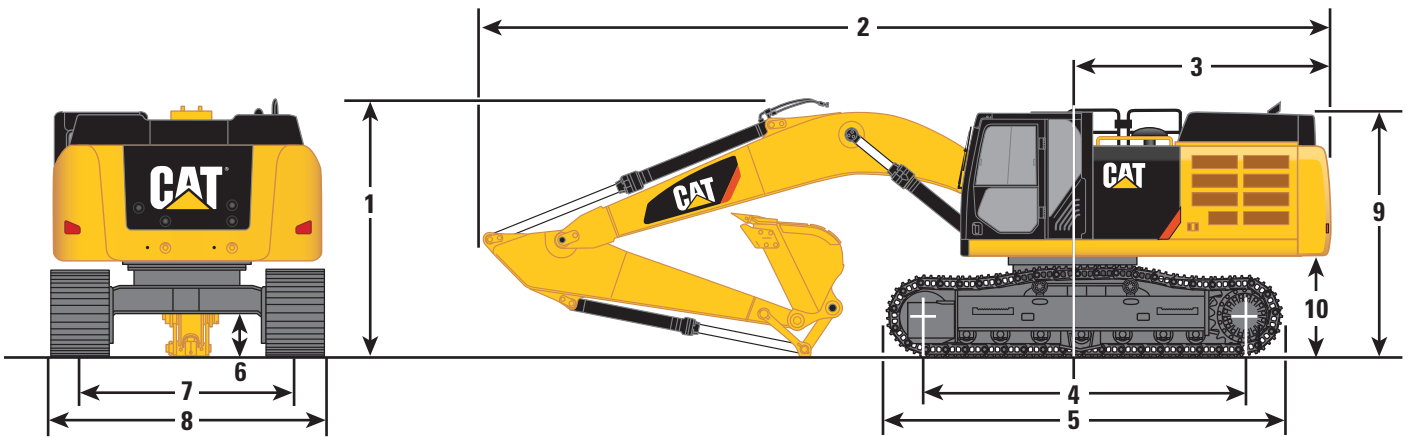
Sound Performance

| | |
|---------------------|-----------|
| Interior – ISO 6396 | 69 dB(A) |
| Exterior – ISO 6395 | 106 dB(A) |

352F XE Hydraulic Excavator Specifications

Dimensions

All dimensions are approximate.



| Boom Options | HD Reach Boom 6.9 m | | Mass Boom 6.55 m | |
|--------------------------------------|------------------------|--------------------|---------------------|--------------------|
| Stick Options | R3.35TB HD | R2.9TB HD | M3.0UB | M2.5UB |
| 1 Shipping Height to Boom | 3660 mm | 3690 mm | 4080 mm | 4040 mm |
| Shipping Height with Handrail | 3520 mm | 3520 mm | 3520 mm | 3520 mm |
| 2 Shipping Length | 11 870 mm | 11 880 mm | 11 570 mm | 11 650 mm |
| 3 Tail Swing Radius | 3760 mm | 3760 mm | 3760 mm | 3760 mm |
| 4 Length to Center of Rollers | 4340 mm | 4340 mm | 4340 mm | 4340 mm |
| 5 Track Length | 5380 mm | 5380 mm | 5380 mm | 5380 mm |
| 6 Ground Clearance* | 710 mm | 710 mm | 710 mm | 710 mm |
| Ground Clearance** | 740 mm | 740 mm | 740 mm | 740 mm |
| 7 Track Gauge (expanded) | 2890 mm | 2890 mm | 2890 mm | 2890 mm |
| Track Gauge (retracted) | 2390 mm | 2390 mm | 2390 mm | 2390 mm |
| 8 Transport Width (expanded) | | | | |
| 600 mm Shoes | 3490 mm | 3490 mm | 3490 mm | 3490 mm |
| 750 mm Shoes | 3640 mm | 3640 mm | 3640 mm | 3640 mm |
| 900 mm Shoes | 3790 mm | 3790 mm | 3790 mm | 3790 mm |
| Transport Width (retracted) | | | | |
| 600 mm Shoes | 3000 mm | 3000 mm | 3000 mm | 3000 mm |
| 750 mm Shoes | 3240 mm | 3240 mm | 3240 mm | 3240 mm |
| 900 mm Shoes | 3290 mm | 3290 mm | 3290 mm | 3290 mm |
| 9 Cab Height | 3370 mm | 3370 mm | 3370 mm | 3370 mm |
| Cab Height with Top Guard | 3540 mm | 3540 mm | 3540 mm | 3540 mm |
| 10 Counterweight Clearance** | 1430 mm | 1430 mm | 1430 mm | 1430 mm |
| Bucket Type | GD | GD | HD | HD |
| Bucket Capacity | 3.1 m ³ | 3.1 m ³ | 3.2 m ³ | 3.2 m ³ |
| Bucket Tip Radius | 1866 mm | 1866 mm | 2046 mm | 2046 mm |

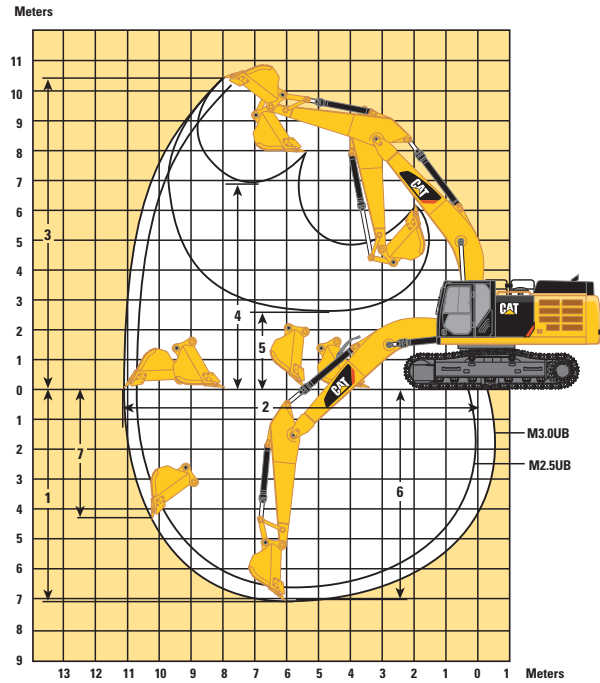
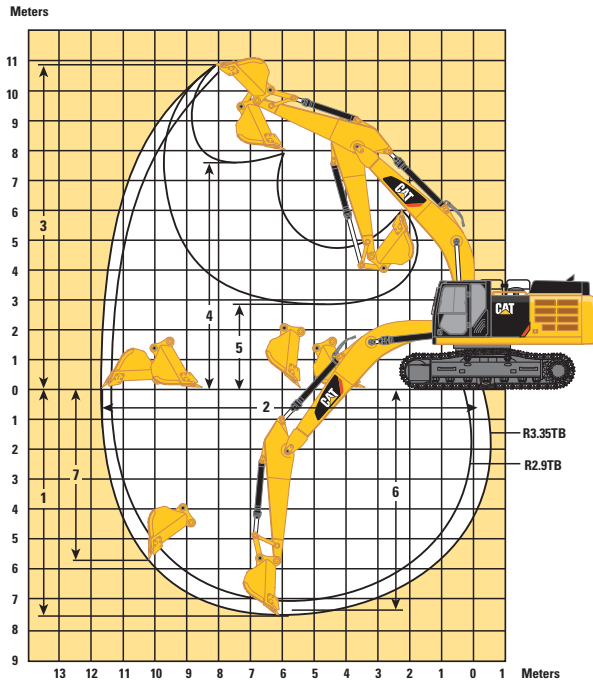
*Including shoe lug height.

**Without shoe lug height.

352F XE Hydraulic Excavator Specifications

Working Ranges

All dimensions are approximate.



Boom Options

HD Reach Boom 6.9 m

Mass Boom 6.55 m

Stick Options

| | R3.35TB HD | R2.9TB HD | M3.0UB | M2.5UB |
|---|--------------------|--------------------|--------------------|--------------------|
| 1 Maximum Digging Depth | 7510 mm | 7060 mm | 7150 mm | 6650 mm |
| 2 Maximum Reach at Ground Level | 11 710 mm | 11 290 mm | 11 240 mm | 10 770 mm |
| 3 Maximum Cutting Height | 10 970 mm | 10 790 mm | 10 440 mm | 10 250 mm |
| 4 Maximum Loading Height | 7580 mm | 7400 mm | 6900 mm | 6700 mm |
| 5 Minimum Loading Height | 2900 mm | 3350 mm | 2730 mm | 3230 mm |
| 6 Maximum Depth Cut for 2440 mm Level Bottom | 7360 mm | 6900 mm | 7010 mm | 6490 mm |
| 7 Maximum Vertical Wall Digging Depth | 5680 mm | 5270 mm | 4280 mm | 3850 mm |
| Bucket Type | GD | GD | SD | SD |
| Bucket Capacity | 3.1 m ³ | 3.1 m ³ | 3.2 m ³ | 3.2 m ³ |
| Bucket Tip Radius | 1866 mm | 1866 mm | 2121 mm | 2121 mm |

352F XE Hydraulic Excavator Specifications

Bucket and Stick Forces

| Boom Options | HD Reach Boom 6.9 m | | Mass Boom 6.55 m | |
|----------------------------|------------------------|-----------|---------------------|--------|
| Stick Options | R3.35TB HD | R2.9TB HD | M3.0UB | M2.5UB |
| TB Linkage | | | | |
| General Duty Capacity | | | | |
| Bucket Digging Force (ISO) | 268 kN | 268 kN | — | — |
| Stick Digging Force (ISO) | 199 kN | 219 kN | — | — |
| Heavy Duty | | | | |
| Bucket Digging Force (ISO) | 268 kN | 268 kN | — | — |
| Stick Digging Force (ISO) | 201 kN | 221 kN | — | — |
| Severe Duty | | | | |
| Bucket Digging Force (ISO) | 266 kN | 266 kN | — | — |
| Stick Digging Force (ISO) | 200 kN | 220 kN | — | — |
| Extreme Duty | | | | |
| Bucket Digging Force (ISO) | 266 kN | 266 kN | — | — |
| Stick Digging Force (ISO) | 200 kN | 220 kN | — | — |
| UB Linkage | | | | |
| Heavy Duty | | | | |
| Bucket Digging Force (ISO) | — | — | 296 kN | 296 kN |
| Stick Digging Force (ISO) | — | — | 212 kN | 241 kN |
| Severe Duty | | | | |
| Bucket Digging Force (ISO) | — | — | 290 kN | 290 kN |
| Stick Digging Force (ISO) | — | — | 211 kN | 239 kN |

352F XE Hydraulic Excavator Specifications

Major Component Weights

| | kg |
|---|--------|
| Base Machine (with boom cylinder, without counterweight, front linkage and track) | |
| Long Variable Gauge Undercarriage | 27 460 |
| Counterweight | |
| 9.0 mt | 9000 |
| Boom (includes lines, pins and stick cylinder) | |
| HD Reach Boom (6.9 m) | 4630 |
| Mass Boom (6.55 m) | 4860 |
| Stick (includes lines, pins, bucket linkage and bucket cylinder) | |
| R3.35TB HD | 2540 |
| R2.9TB HD | 2400 |
| M3.0UB | 2930 |
| M2.5UB | 2720 |
| Track Shoes (per two tracks) | |
| 600 mm Double Grouser | 5290 |
| 600 mm Triple Grouser | 5190 |
| 750 mm Triple Grouser | 5940 |
| 900 mm Triple Grouser | 6700 |
| Buckets | |
| TB1880GD-3.10 m ³ | 2440 |
| UB1850HD-3.2 m ³ | 2840 |

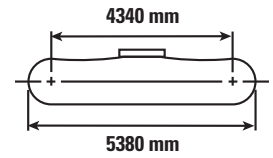
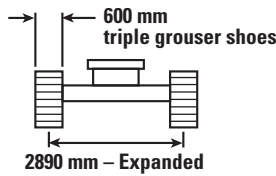
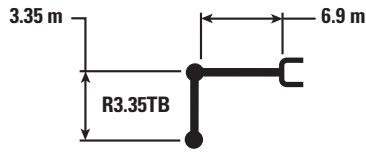
Base machine includes 75 kg operator weight, 90% fuel weight and undercarriage with center guard.

Operating Weights and Ground Pressures – Long VG Undercarriage

| Boom | Stick | Bucket | 900 mm | | 750 mm | | 600 mm | | 600 mm | |
|-----------|------------|--------------------|----------------------|-----|----------------------|-----|----------------------|-----|----------------------|-----|
| | | | Triple Grouser Shoes | | Triple Grouser Shoes | | Triple Grouser Shoes | | Double Grouser Shoes | |
| | | | kg | kPa | kg | kPa | kg | kPa | kg | kPa |
| HD R6.9 m | R3.35TB HD | 3.1 m ³ | 52 770 | 61 | 52 010 | 72 | 51 260 | 89 | 51 360 | 89 |
| HD R6.9 m | R2.9TB HD | 3.1 m ³ | 52 630 | 61 | 51 870 | 72 | 51 120 | 89 | 51 220 | 89 |
| M6.55 m | M3.0UB | 3.2 m ³ | 53 790 | 62 | 53 030 | 74 | 52 280 | 91 | 52 380 | 91 |
| M6.55 m | M2.5UB | 3.2 m ³ | 53 580 | 62 | 52 820 | 74 | 52 070 | 91 | 52 170 | 91 |

352F XE Hydraulic Excavator Specifications

Reach Boom Lift Capacities – Counterweight: 9.0 mt – without Bucket – Heavy Lift: On



| | | 3000 mm | | 4500 mm | | 6000 mm | | 7500 mm | | 9000 mm | | mm | | |
|----------|----|---------|---------|---------|---------|---------|---------|---------|---------|---------|------|---------|--------|--------|
| | | | | | | | | | | | | | | mm |
| 9000 mm | kg | | | | | | | | | | | *8950 | *8950 | 7450 |
| 7500 mm | kg | | | | | | | *11 950 | *11 950 | | | *8450 | *8450 | 8580 |
| 6000 mm | kg | | | | | | | *12 600 | 12 300 | *11 200 | 9200 | *8350 | *8350 | 9340 |
| 4500 mm | kg | | | *21 250 | *21 250 | *16 250 | *16 250 | *13 700 | 11 900 | *12 300 | 9000 | *8450 | 7850 | 9800 |
| 3000 mm | kg | | | *26 150 | 23 800 | *18 600 | 15 700 | *15 000 | 11 400 | *12 900 | 8750 | *8850 | 7450 | 10 020 |
| 1500 mm | kg | | | *18 500 | *18 500 | *20 400 | 15 000 | *16 050 | 11 000 | 12 850 | 8550 | *9500 | 7350 | 10 010 |
| 0 mm | kg | | | *21 550 | *21 550 | *21 150 | 14 600 | 16 500 | 10 750 | 12 700 | 8350 | *10 500 | 7500 | 9760 |
| -1500 mm | kg | *15 800 | *15 800 | *27 500 | 22 200 | *20 850 | 14 450 | 16 400 | 10 600 | 12 600 | 8300 | 12 150 | 8000 | 9270 |
| -3000 mm | kg | *24 850 | *24 850 | *25 050 | 22 400 | *19 400 | 14 500 | *15 250 | 10 650 | | | *12 750 | 9100 | 8470 |
| -4500 mm | kg | *26 600 | *26 600 | *20 850 | *20 850 | *16 250 | 14 750 | | | | | *12 500 | 11 350 | 7290 |



ISO 10567



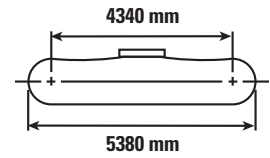
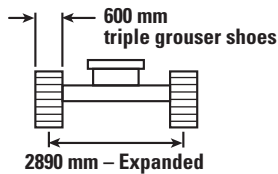
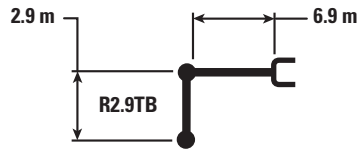
*Indicates that the load is limited by hydraulic lifting capacity rather than tipping load. The above loads are in compliance with hydraulic excavator lift capacity standard ISO 10567:2007. They do not exceed 87% of hydraulic lifting capacity or 75% of tipping load. Weight of all lifting accessories must be deducted from the above lifting capacities. Lifting capacities are based on the machine standing on a firm, uniform supporting surface. The use of a work tool attachment point to handle/lift objects, could affect the machine lift performance.

Lift capacity stays with ±5% for all available track shoes.

Always refer to the appropriate Operation and Maintenance Manual for specific product information.

352F XE Hydraulic Excavator Specifications

Reach Boom Lift Capacities – Counterweight: 9.0 mt – without Bucket – Heavy Lift: On



| | | 3000 mm | | 4500 mm | | 6000 mm | | 7500 mm | | 9000 mm | | mm | | |
|----------|----|---------|---------|---------|---------|---------|---------|---------|--------|---------|------|---------|---------|------|
| | | | | | | | | | | | | | | |
| 9000 mm | kg | | | | | | | | | | | *11 200 | *11 200 | 6760 |
| 7500 mm | kg | | | | | | | *12 800 | 12 450 | | | *10 650 | *10 650 | 8000 |
| 6000 mm | kg | | | | | *14 950 | *14 950 | *13 300 | 12 200 | | | *10 550 | 9450 | 8800 |
| 4500 mm | kg | | | *23 000 | *23 000 | *17 150 | 16 400 | *14 350 | 11 800 | *12 800 | 8950 | *10 850 | 8500 | 9300 |
| 3000 mm | kg | | | *19 150 | *19 150 | *19 350 | 15 600 | *15 500 | 11 400 | 13 100 | 8750 | *11 450 | 8050 | 9530 |
| 1500 mm | kg | | | *15 250 | *15 250 | *20 900 | 14 950 | *16 400 | 11 000 | 12 900 | 8550 | 11 900 | 7950 | 9510 |
| 0 mm | kg | | | *21 650 | *21 650 | *21 350 | 14 650 | 16 600 | 10 800 | 12 750 | 8450 | 12 250 | 8150 | 9260 |
| -1500 mm | kg | *17 350 | *17 350 | *26 750 | 22 450 | *20 700 | 14 550 | *16 350 | 10 700 | | | 13 300 | 8800 | 8730 |
| -3000 mm | kg | *28 850 | *28 850 | *23 850 | 22 700 | *18 800 | 14 650 | *14 650 | 10 800 | | | *13 600 | 10 150 | 7880 |
| -4500 mm | kg | | | *19 100 | *19 100 | *14 900 | *14 900 | | | | | *13 100 | *13 100 | 6580 |



ISO 10567



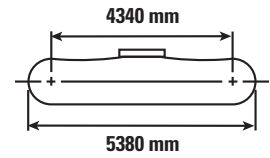
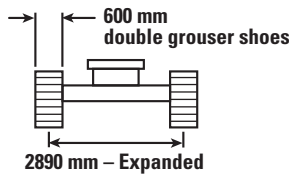
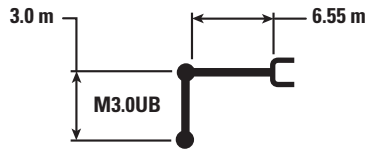
*Indicates that the load is limited by hydraulic lifting capacity rather than tipping load. The above loads are in compliance with hydraulic excavator lift capacity standard ISO 10567:2007. They do not exceed 87% of hydraulic lifting capacity or 75% of tipping load. Weight of all lifting accessories must be deducted from the above lifting capacities. Lifting capacities are based on the machine standing on a firm, uniform supporting surface. The use of a work tool attachment point to handle/lift objects, could affect the machine lift performance.

Lift capacity stays with $\pm 5\%$ for all available track shoes.

Always refer to the appropriate Operation and Maintenance Manual for specific product information.

352F XE Hydraulic Excavator Specifications

Mass Boom Lift Capacities – Counterweight: 9.0 mt – without Bucket – Heavy Lift: On



| | | 3000 mm | | 4500 mm | | 6000 mm | | 7500 mm | | 9000 mm | | mm | | |
|----------|----|---------|---------|---------|---------|---------|---------|---------|--------|---------|------|---------|---------|------|
| | | | | | | | | | | | | | | |
| 9000 mm | kg | | | | | | | | | | | *10 700 | *10 700 | 6500 |
| 7500 mm | kg | | | | | | | *12 300 | 12 200 | | | *9950 | *9950 | 7780 |
| 6000 mm | kg | | | | | | | *13 000 | 12 000 | | | *9700 | 9500 | 8610 |
| 4500 mm | kg | | | *21 300 | *21 300 | *16 350 | 16 350 | *13 900 | 11 600 | *11 300 | 8650 | *9850 | 8500 | 9110 |
| 3000 mm | kg | | | *25 950 | 23 500 | *18 550 | 15 450 | *15 000 | 11 150 | 12 850 | 8450 | *10 300 | 8000 | 9340 |
| 1500 mm | kg | | | *22 750 | 22 300 | *20 200 | 14 700 | *15 950 | 10 750 | 12 600 | 8250 | *11 150 | 7850 | 9330 |
| 0 mm | kg | | | *26 700 | 21 900 | *20 800 | 14 300 | 16 300 | 10 450 | 12 450 | 8150 | 12 350 | 8050 | 9070 |
| -1500 mm | kg | *18 950 | *18 950 | *26 700 | 21 900 | *20 250 | 14 150 | *15 850 | 10 350 | | | *13 350 | 8750 | 8530 |
| -3000 mm | kg | *30 800 | *30 800 | *23 750 | 22 150 | *18 300 | 14 250 | *13 850 | 10 500 | | | *13 350 | 10 250 | 7660 |
| -4500 mm | kg | | | *18 450 | *18 450 | *13 800 | *13 800 | | | | | *12 700 | *12 700 | 6310 |



ISO 10567



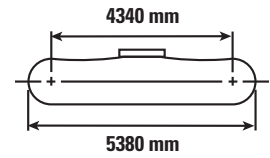
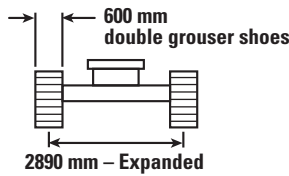
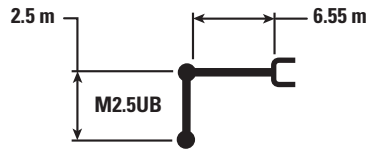
*Indicates that the load is limited by hydraulic lifting capacity rather than tipping load. The above loads are in compliance with hydraulic excavator lift capacity standard ISO 10567:2007. They do not exceed 87% of hydraulic lifting capacity or 75% of tipping load. Weight of all lifting accessories must be deducted from the above lifting capacities. Lifting capacities are based on the machine standing on a firm, uniform supporting surface. The use of a work tool attachment point to handle/lift objects, could affect the machine lift performance.



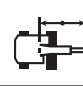

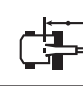

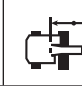

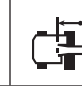

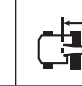
Lift capacity stays with $\pm 5\%$ for all available track shoes.

Always refer to the appropriate Operation and Maintenance Manual for specific product information.

352F XE Hydraulic Excavator Specifications

Mass Boom Lift Capacities – Counterweight: 9.0 mt – without Bucket – Heavy Lift: On



| | | 3000 mm | | 4500 mm | | 6000 mm | | 7500 mm | |  | | mm |
|----------|----|---|---|---|---|---|---|--|---|---|---|------|
| | |  |  |  |  |  |  |  |  |  |  | |
| 7500 mm | kg | | | | | | | | | *13 000 | 12 800 | 7220 |
| 6000 mm | kg | | | | | *15 400 | *15 400 | *13 850 | 11 900 | *12 700 | 10 450 | 8110 |
| 4500 mm | kg | | | *23 150 | *23 150 | *17 350 | 16 200 | *14 600 | 11 550 | *12 900 | 9250 | 8640 |
| 3000 mm | kg | | | | | *19 400 | 15 350 | *15 600 | 11 150 | 13 100 | 8650 | 8890 |
| 1500 mm | kg | | | | | *20 750 | 14 700 | *16 350 | 10 800 | 12 950 | 8500 | 8870 |
| 0 mm | kg | | | *25 200 | 22 100 | *20 950 | 14 400 | 16 400 | 10 550 | 13 450 | 8800 | 8600 |
| -1500 mm | kg | *19 650 | *19 650 | *25 800 | 22 200 | *20 000 | 14 350 | *15 600 | 10 550 | *14 150 | 9650 | 8030 |
| -3000 mm | kg | *27 200 | *27 200 | *22 300 | *22 300 | *17 450 | 14 550 | | | *13 950 | 11 600 | 7090 |



ISO 10567



*Indicates that the load is limited by hydraulic lifting capacity rather than tipping load. The above loads are in compliance with hydraulic excavator lift capacity standard ISO 10567:2007. They do not exceed 87% of hydraulic lifting capacity or 75% of tipping load. Weight of all lifting accessories must be deducted from the above lifting capacities. Lifting capacities are based on the machine standing on a firm, uniform supporting surface. The use of a work tool attachment point to handle/lift objects, could affect the machine lift performance.

Lift capacity stays with ±5% for all available track shoes.

Always refer to the appropriate Operation and Maintenance Manual for specific product information.

352F XE Hydraulic Excavator Specifications

Bucket Specifications and Compatibility

| | Linkage | Width | Capacity | Weight | Fill | HD Reach Boom | | Mass Boom | |
|--|---------|-------|----------------|--------|------|---------------|---------|-----------|------|
| | | mm | m ³ | kg | % | R3.35 HD | R2.9 HD | M3.0 | M2.5 |
| Without Pin Grabber Coupler | | | | | | | | | |
| General Duty (GD) | TB | 1370 | 1.87 | 1755 | 100 | ● | ● | | |
| | UB | 1550 | 2.61 | 2418 | 100 | | | ⊙ | ● |
| | UB | 2000 | 3.60 | 2881 | 100 | | | ○ | ⊖ |
| Heavy Duty (HD) | TB | 1500 | 2.41 | 2065 | 100 | ● | ● | | |
| | TB | 1650 | 2.41 | 2210 | 100 | ● | ● | | |
| | TB | 1800 | 2.69 | 2423 | 100 | ⊙ | ⊙ | | |
| | TB | 1850 | 2.78 | 2420 | 100 | ⊙ | ⊙ | | |
| | UB | 1650 | 2.77 | 2562 | 100 | | | ⊙ | ● |
| | UB | 1850 | 3.19 | 2735 | 100 | | | ⊖ | ⊙ |
| | UB | 1950 | 3.43 | 2898 | 100 | | | ○ | ⊖ |
| Severe Duty (SD) | TB | 1550 | 2.14 | 2340 | 90 | ● | ● | | |
| | TB | 1700 | 2.41 | 2494 | 90 | ● | ● | | |
| | TB | 1900 | 2.78 | 2716 | 90 | ⊙ | ● | | |
| | UB | 1450 | 2.39 | 2540 | 90 | | | ● | ● |
| | UB | 1550 | 2.61 | 2648 | 90 | | | ● | ● |
| | UB | 1650 | 2.77 | 2729 | 90 | | | ⊙ | ● |
| | UB | 1850 | 3.21 | 2987 | 90 | | | ⊖ | ⊙ |
| | UB | 1950 | 3.43 | 3058 | 90 | | | ⊖ | ⊖ |
| Extreme Duty (XD) | TB | 1700 | 2.41 | 2765 | 90 | ● | ● | | |
| | UB | 1550 | 2.61 | 3091 | 90 | | | ⊙ | ● |
| | UB | 1650 | 2.77 | 3192 | 90 | | | ⊙ | ● |
| Maximum load pin-on (payload + bucket) | | | | | kg | 7426 | 8017 | 7739 | 8528 |
| With Pin Grabber Coupler | | | | | | | | | |
| General Duty (GD) | TB | 1370 | 1.87 | 1755 | 100 | ● | ● | | |
| Heavy Duty (HD) | TB | 1500 | 2.41 | 2065 | 100 | ● | ● | | |
| | TB | 1650 | 2.41 | 2210 | 100 | ● | ● | | |
| | TB | 1800 | 2.69 | 2423 | 100 | ⊙ | ⊙ | | |
| | TB | 1850 | 2.78 | 2420 | 100 | ⊙ | ⊙ | | |
| Severe Duty (SD) | TB | 1550 | 2.14 | 2340 | 90 | ● | ● | | |
| | TB | 1700 | 2.41 | 2494 | 90 | ● | ● | | |
| | TB | 1900 | 2.78 | 2716 | 90 | ⊙ | ● | | |
| Extreme Duty (XD) | TB | 1700 | 2.41 | 2765 | 90 | ● | ● | | |
| Maximum load with coupler (payload + bucket) | | | | | kg | 6593 | 7184 | 6906 | 7695 |

The above loads are in compliance with hydraulic excavator standard EN474, they do not exceed 87% of hydraulic lifting capacity or 75% of tipping capacity with front linkage fully extended at ground line with bucket curled.

Capacity based on ISO 7451.

Bucket weight with long tips.

Maximum Material Density

- 2100 kg/m³
- ⊙ 1800 kg/m³
- ⊖ 1500 kg/m³
- 1200 kg/m³

Caterpillar recommends using appropriate work tools to maximize the value customers receive from our products. Use of work tools, including buckets, which are outside of Caterpillar's recommendations or specifications for weight, dimensions, flows, pressures, etc. may result in less-than-optimal performance, including but not limited to reductions in production, stability, reliability, and component durability. Improper use of a work tool resulting in sweeping, prying, twisting and/or catching of heavy loads will reduce the life of the boom and stick.

352F XE Hydraulic Excavator Specifications

Bucket Specifications and Compatibility

| | Linkage | Width | Capacity | Weight | Fill | HD Reach Boom | | Mass Boom | |
|--|---------|-------|----------------|--------|------|---------------|---------|-----------|------|
| | | mm | m ³ | kg | % | R3.35 HD | R2.9 HD | M3.0 | M2.5 |
| With Quick Coupler (CW55) | | | | | | | | | |
| Heavy Duty (HD) | TB | 1650 | 2.41 | 2196 | 100 | ● | ● | | |
| | UB | 1650 | 2.77 | 2479 | 100 | | | ⊙ | ● |
| | UB | 1850 | 3.19 | 2664 | 100 | | | ⊖ | ⊙ |
| Severe Duty (SD) | UB | 1550 | 2.61 | 2570 | 90 | | | ● | ● |
| | UB | 1650 | 2.77 | 2655 | 90 | | | ⊙ | ● |
| Extreme Duty (XD) | UB | 1550 | 2.61 | 3087 | 90 | | | ⊙ | ● |
| Maximum load with coupler (payload + bucket) | | | | | kg | 6666 | 7257 | 6899 | 7688 |

The above loads are in compliance with hydraulic excavator standard EN474, they do not exceed 87% of hydraulic lifting capacity or 75% of tipping capacity with front linkage fully extended at ground line with bucket curled.

Capacity based on ISO 7451.

Bucket weight with long tips.

Maximum Material Density

- 2100 kg/m³
- ⊙ 1800 kg/m³
- ⊖ 1500 kg/m³

Caterpillar recommends using appropriate work tools to maximize the value customers receive from our products. Use of work tools, including buckets, which are outside of Caterpillar's recommendations or specifications for weight, dimensions, flows, pressures, etc. may result in less-than-optimal performance, including but not limited to reductions in production, stability, reliability, and component durability. Improper use of a work tool resulting in sweeping, prying, twisting and/or catching of heavy loads will reduce the life of the boom and stick.

352F XE Hydraulic Excavator Specifications

Work Tool Offering Guide

| Boom Options | HD Reach Boom | | Mass Boom | |
|--------------------------------|---|---|---|---|
| Stick Options | R3.35 HD | R2.9 HD | M3.0 | M2.5 |
| Hydraulic Hammer | H160E s H180E s | H160E s H180E s | H160E s* H180E s* | H160E s* H180E s* |
| Multi-Processor | MP30 CC Jaw MP30 CR Jaw MP30 PP Jaw MP30 PS Jaw MP30 S Jaw MP30 TS Jaw | MP30 CC Jaw MP30 CR Jaw MP30 PP Jaw MP30 PS Jaw MP30 S Jaw MP30 TS Jaw | MP30 CC Jaw* MP30 CR Jaw* MP30 PP Jaw* MP30 PS Jaw* MP30 S Jaw* MP30 TS Jaw* MP40 CC Jaw** MP40 CR Jaw** MP40 PS Jaw**# MP40 S Jaw** | MP30 CC Jaw* MP30 CR Jaw* MP30 PP Jaw* MP30 PS Jaw* MP30 S Jaw* MP30 TS Jaw* MP40 CC Jaw^ MP40 CR Jaw^ MP40 PS Jaw** MP40 S Jaw^ |
| Pulverizer | P235 | P235 | P235* | P235* |
| Crusher | P335 | P335 | P335* P360^ | P335* P360* |
| Demolition and Sorting Grapple | G330 | G330 | G330* | G330* |
| Scrap and Demolition Shear | S340B S365B## S385B## | S340B S365B## S385B## | S340B* S365B## S385B## | S340B* S365B## S385B## |
| Orange Peel Grapple | | | These work tools are available for the 352F XE. | |
| Dedicated Quick Coupler | CW-55 | | Consult your Cat dealer for proper match. | |

Note: Matches are dependent on excavator configurations. Consult your Cat dealer for proper work tool match.

*Pin-on or CW coupler.

**Pin-on only.

#Over the front only.

##Boom mount.

^Over the front only with CW coupler (match Pin-on and CW).

Standard Equipment

Standard equipment may vary. Consult your Cat dealer for details.

ENGINE

- C13 ACERT diesel engine
- Stage IV emission package
- 2300 m altitude capability with no derate
- Biodiesel capable
- Automatic engine speed control
- Electric priming pump with switch
- Water separator in fuel line including switch water level sensor and indicator
- Air precleaner
- Side-by-side cooling system
- Economy and standard power modes
- Primary filter with water separator
- Two-speed travel
- Radial seal air filter
- Fuel differential indicator switch in fuel line

HYDRAULIC SYSTEM

- Reverse swing dampening valve
- Automatic swing parking brake
- High-performance hydraulic return filter
- Regeneration circuit for boom and stick
- Capability of installing additional auxiliary circuits
- Bio oil capable
- SmartBoom
- 48° ambient cooling capability
- Heavy lift mode

SAFETY AND SECURITY

- Cat one key security system
- Door locks
- Cap locks on fuel and hydraulic tanks
- Lockable external tool/storage box
- Signaling/warning horn
- Secondary engine shutoff switch
- Mirrors
- Rear window for emergency exit
- Rear vision camera
- Capability to connect a beacon
- Bolt on FOGS capability
- Safety hammer for breaking cab glass

ELECTRICAL

- 80 amp alternator
- Circuit breaker
- Standard battery
- Capability to electrically connect a beacon

UNDERCARRIAGE/UPPERFRAME

- Grease Lubricated Track with PPR2 GLT4, resin seal
- Heavy duty track roller
- Track motor guards
- Towing eye on base frame
- Guard, heavy-duty bottom

LIGHTS

- Cab and boom lights with time delay
- Exterior lights integrated into storage box

CAB

- Parallel wiper and washer
- Mirrors
- Pressurized operator station with positive filtration
- Laminated glass front upper window and tempered other windows
- Sliding upper door window (left-hand cab door)
- Removable lower windshield within cab storage bracket
- Openable skylight
- Interior:
 - Glass-breaking safety hammer
 - Coat hook
 - Beverage holder
 - Literature holder
 - Interior lighting
 - AM/FM radio mounting (DIN size)
 - Two 12V stereo speakers
 - Storage shelf suitable for lunch or toolbox
 - Power supply with 12V, two power outlets (10 amp)
 - Thumb wheel modulation joystick for use with combined auxiliary control
 - Sun screen
 - Air conditioner, heater and defroster with climate control
- Seat:
 - Adjustable high-back, heated and ventilated seat with air suspension

- Seat:
 - Seat belt, 51 mm
 - Adjustable armrest
 - Height adjustable joystick consoles
 - Neutral lever (lock out) for all controls
 - Travel control pedals with removable hand levers
 - Capability of installing two additional pedals
 - Two speed travel
 - Floor mat, washable
- Monitor:
 - Clock
 - Video ready
 - Color LCD display with warning, filter/fluid change, and working hour information
 - Language display (full graphic and full color display)
 - Machine condition, error code and tool mode setting information
 - Start-up level check for engine oil, engine coolant and hydraulic oil
 - Warning, filter/fluid change and working hour information
 - Fuel consumption meter

COUNTERWEIGHT

- 9.0 mt

INTEGRATED TECHNOLOGIES

- Product Link
- Rear vision camera
- Cat Grade Control
- Cat Production Measurement

352F XE Optional Equipment

Optional Equipment

Optional equipment may vary. Consult your Cat dealer for details.

ENGINE

- Electric refueling pump with auto shut off
- Jump start receptacle
- Preventive Maintenance, quick drains, engine and hydraulic oil (QuickEvac™)

HYDRAULIC SYSTEM

- HP hydraulic lines for boom and stick
- MP hydraulic lines for boom and stick
- QC hydraulic lines for boom and stick
- QC control

CAB

- Cab front rain protector
- Windshield:
 - 70-30 split, sliding, removable lower windshield with in cab storage bracket
 - One-piece, fixed

ELECTRICAL

- Cold weather starting package, 240V, –32° C
- Travel alarm
- Electric refueling pump

TRACK

- 600 mm triple grouser shoes
- 600 mm double grouser shoes
- 750 mm triple grouser shoes
- 900 mm triple grouser shoes

GUARDS

- Track guiding guards:
 - Center
 - Segmented, three pieces
 - Full length, two pieces
- FOGS (Falling Object Guards), bolt-on

FRONT LINKAGE

- HD 6.9 m Reach boom [with Boom Lowering Control Valve (BLCV)/ Stick Lowering Control Valve (SLCV)/ SmartBoom]
 - HD R3.35TB stick
 - HD R2.9TB stick
- 6.55 m Mass boom (with or without BLCV/SLCV/SmartBoom)
 - M3.0UB stick
 - M2.5UB stick
- Bucket linkage
 - UB family (with or without lifting eye)
 - TB family (without lifting eye)
- Universal coupler

LIGHTS

- Working lights, cab mounted with time delay
- Halogen boom lights

For more complete information on Cat products, dealer services, and industry solutions, visit us on the web at www.cat.com

AEHQ7520 (11-2015)

© 2015 Caterpillar
All rights reserved

Materials and specifications are subject to change without notice. Featured machines in photos may include additional equipment. See your Cat dealer for available options.

CAT, CATERPILLAR, SAFETY.CAT.COM, their respective logos, "Caterpillar Yellow" and the "Power Edge" trade dress, as well as corporate and product identity used herein, are trademarks of Caterpillar and may not be used without permission.

VisionLink is a trademark of Trimble Navigation Limited, registered in the United States and in other countries.

