



Cat[®] TH314D

TELEHANDLER

FEATURES:

- **Powerful Hydraulics** – The chain driven boom and excellent hydraulic flow allow the operator to work efficiently and safely. Raising and lowering as well as extending and retracting the boom can be done quickly.
- **Durability** – With excellent stability, ground clearance and guarding, the vital components of the machine are well protected from potential damage. Maintenance is easy with an accessible engine, simple to change service parts and easy access lubrication points.
- **Comfort** – An ergonomic cab design featuring an LED dash display, multi-function joystick and comfortable seating options, ensures the operator has everything they need. Superb stability and smooth F-N-R changes provide the most comfortable ride possible.
- **Safety** – The seated position within the cab allows for good visibility to the front work tool and stabilizers.

Specifications

Engine

Model	TCD 3.6 L4*
Gross Power	55.4 kW 75.3 Ch/CV/Ps 74.3 hp/BHP
Maximum Torque	390 N-m @ 1,300 rpm
Bore	98 mm
Stroke	120 mm
Displacement	3.6 L

*Meets EU Stage IV emission standards.

Weights

Operating Weight with Carriage and Forks	10 095 kg
--	-----------

Operating Specifications

Rated Load Capacity	3600 kg
Maximum Lift Height	
Stabilizers Up	13.85 m
Stabilizers Down	13.85 m
Maximum Forward Reach	8.68 m
Top Travel Speed	20 km/h
Load at Maximum Height	
Stabilizers Up	1500 kg
Stabilizers Down	3000 kg
Load at Maximum Reach	
Stabilizers Up	100 kg
Stabilizers Down	900 kg
Outside Turning Radius Over Tires	3.81 m

TH314D Telehandler

Service Refill Capacities

Fuel Tank	150 L
Hydraulic Tank	102 L

Tires

Standard	15.5/80-24
----------	------------

Brakes

Service Brakes	Servo assisted front and rear axle brakes
Parking Brakes	Mechanical on front axle

Hydraulic System

Maximum System Pressure	270 bar
Maximum Pump Flow	100 L/min
Pump Type	Gear pump
Auxiliary Hydraulic Supply	95 L/min

Transmission Speeds

Forward	
1	5 km/h
2	10 km/h
3	20 km/h
Reverse	
1	5 km/h
2	10 km/h
3	20 km/h

Boom Performance

Boom Up	15.9 seconds
Boom Down	11.6 seconds
Tele In	14.8 seconds
Tele Out	15.1 seconds
Crowd Forward (dump)	2.5 seconds
Crowd Backward	3.5 seconds
Combined	
Up and Out	27 seconds
Down and In	19.5 seconds
Drawbar Pull 55.4 kW	65 kN
Bucket Breakout Force to ISO 8313	72 kN
Boom Breakout Force	72 kN

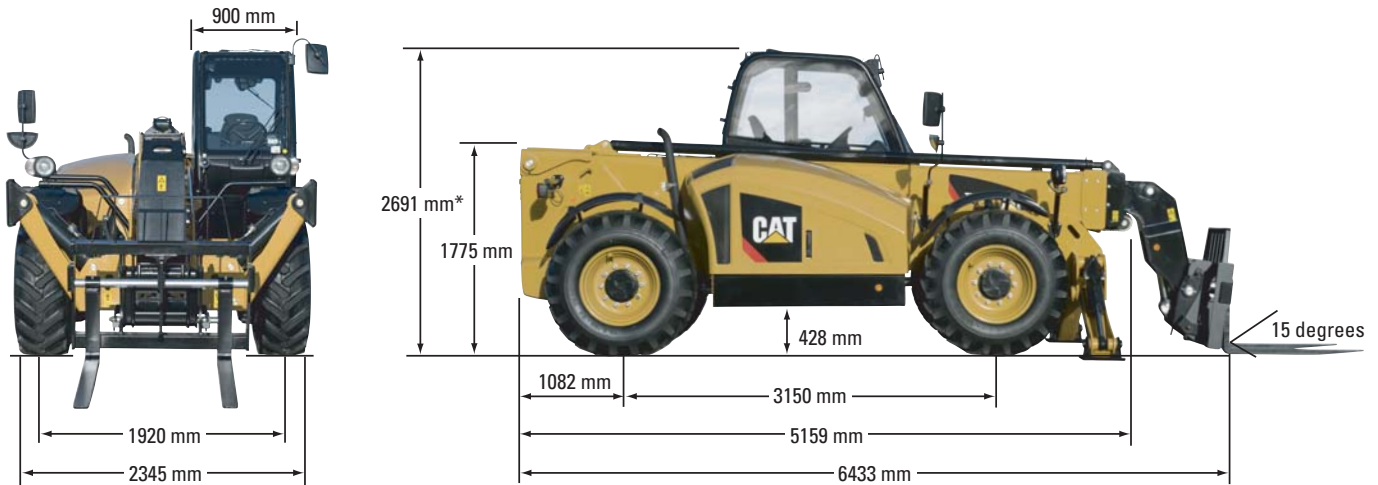
Sound

Operator Sound	80 dB(A)
Exterior Sound (55.4 kW Engine)	104 dB(A)

Air Conditioning System

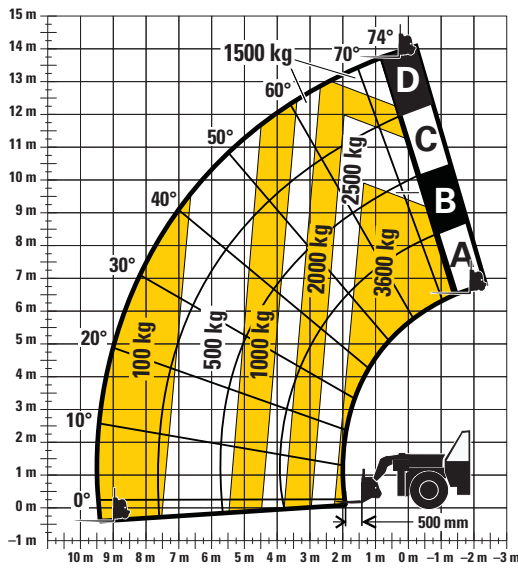
The air conditioning system on this machine contains the fluorinated greenhouse gas refrigerant R134a (Global Warming Potential = 1430). The system contains 1.2 kg of refrigerant which has a CO₂ equivalent of 1.575 metric tonnes.

Dimensions (All dimensions are approximate.)

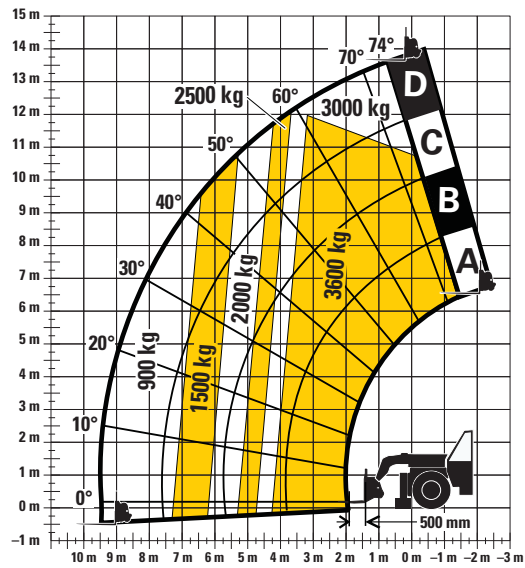


*to overall height add for the following options: 67 mm for roof guard, 25 mm for air conditioning, 182 mm for beacon

Load Chart and Dimensions



Stabilizers Up



Stabilizers Down

NOTICE

Rated lift capacities shown are with machine equipped with carriage and pallet forks. The machine must be level on a firm surface with undamaged, properly inflated tires. Machine specifications and stability are based on rated lift capacities at specific boom angles and boom lengths. (If specifications are critical, the proposed application should be discussed with your dealer.)

DO NOT exceed rated lift capacity loads, as unstable and dangerous machine conditions will result.

Use only approved work tools with proper material handler model/work tool load capacity charts displayed.

DO NOT tip the machine forward to determine the allowable load.

Due to continuous product improvements, machine specifications and/or equipment changes may be made without prior notification.

TH314D Telehandler

Standard and Optional Equipment (Standard and Optional equipment may vary. Consult your Cat® dealer for details.)

	Standard	Optional		Standard	Optional
Cab ROPS and FOPS			Other Equipment		
Longitudinal Stability Indicator	✓	—	Boom Brushes	—	✓
Sunscreen	—	✓	Single Auxiliary Service to Boom Head	✓	—
Mechanical Suspension Seat with Seat Belt	✓	—	Rear Hitch Mirror, Convex	—	✓
Roof Wiper	—	✓	Tool Box	—	✓
Screen Guard	—	✓	Boom Safety Brace	—	✓
Roof Guard	—	✓	Tires		
Heater/De-mister	✓	—	14.00-24 16PR Air Mitas	✓	—
Air Conditioning	—	✓	14.00-24 16PR Air Goodyear	—	✓
Multi Function Joystick Controller with FNR	✓	—	Tow Hitches		
Column Mounted FNR Lever	—	✓	Off Road Tow Hitch	—	✓
Front and Rear Windscreen Wipers	✓	—	Quick Couplers		
Mechanical Park Brake	✓	—	Manual Cat “IT” Interface	✓	—
Electrical			Competitive Couplers	—	✓
1 × 12V 900 CCA Battery	✓	—	Work Tools		
1 × 12V 815 CCA Gel Battery	—	✓	Floating Fork Carriage	—	✓
Block Heater 240 Volt	—	✓	Pallet Forks	—	✓
Work Lights, 4 × Cab Mounted (2 front, 2 rear)	—	✓	Side Shift – Fork Carriage	—	✓
Reverse Alarm	✓	—	1.0 m ³ (1.3 yd ³) General Purpose Bucket	—	✓
Rotating Beacon	—	✓	1.5 m ³ (1.95 yd ³) Rehandling Bucket	—	✓
			1.0 m ³ (1.3 yd ³) Multi Purpose Bucket	—	✓
			Truss Boom	—	✓

For more complete information on Cat products, dealer services, and industry solutions, visit us on the web at www.cat.com

© 2017 Caterpillar
All rights reserved

Materials and specifications are subject to change without notice. Featured machines in photos may include additional equipment. See your Cat dealer for available options.

CAT, CATERPILLAR, SAFETY.CAT.COM, their respective logos, “Caterpillar Yellow” and the “Power Edge” trade dress, as well as corporate and product identity used herein, are trademarks of Caterpillar and may not be used without permission.

AEHQ7874 (05-2017)
(Europe)

