

Cat® 735 SPECIFICATIONS

Tier 4 Final / EU Stage IV Configuration

ENGINE

Engine Model	C13	
Gross Power - SAE J1995	324 kW	434 hp
Net Power - SAE J1349	316 kW	424 hp
Net Power - ISO 14396	320 kW	429 hp
Bore	130mm	5.1 in
Stroke	157 mm	6.2 in
Displacement	12.5 L	763 in³

No Engine De-rating Required Below	3810 m	12,500 ft
Peak Engine Torque Gross (SAE J1995)	2188 Nm	1614 lbf-ft
Peak Engine Torque net (ISO 9249)	2165 Nm	1597 lbf-ft
Peak Engine Torque Speed	1200 rpm	

BODY CAPACITIES

Rated Payload	32 tonnes	35.27 tons
Heaped SAE 2:1	20.0 m³	26.2 yd³
Struck	15.5 m³	20.3 yd³
Tailgate Heaped SAE 2:1	21.3 m³	27.9 yd³
Tailgate Struck	16.3 m³	21.3 yd³

TRANSMISSION

Forward 1	8 km/h	5 mph
Forward 2	15 km/h	9 mph
Forward 3	23 km/h	14 mph
Forward 4	35 km/h	22 mph
Forward 5	48 km/h	30 mph
Forward 6	57 km/h	35 mph
Reverse 1	9 km/h	6 mph

TIRE

Standard	750/65
----------	--------

SOUND LEVELS

Interior Cab	72 dB(A)
--------------	----------

OPERATING WEIGHTS

	kg	lb
Front axle - empty	15480	34128
Centre axle - empty	4990	11001
Rear axle - empty	4770	10516
Total - empty	25240	55645

Front axle - rated load	4100	9039
Centre axle - rated load	13950	30754
Rear axle - rated load	13950	30754
Total - rated load	32000	70548

Front axle - loaded	19580	43166
Centre axle - loaded	18940	41756
Rear axle - loaded	18720	41270
Total - loaded	57240	126192

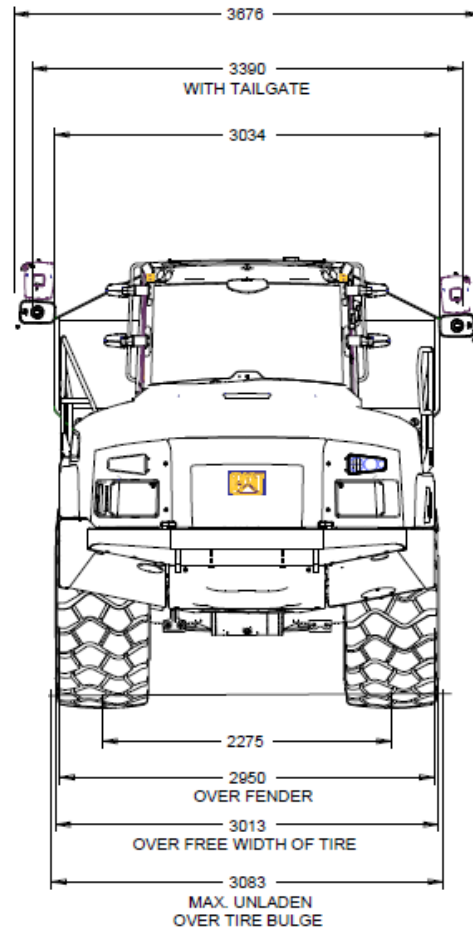
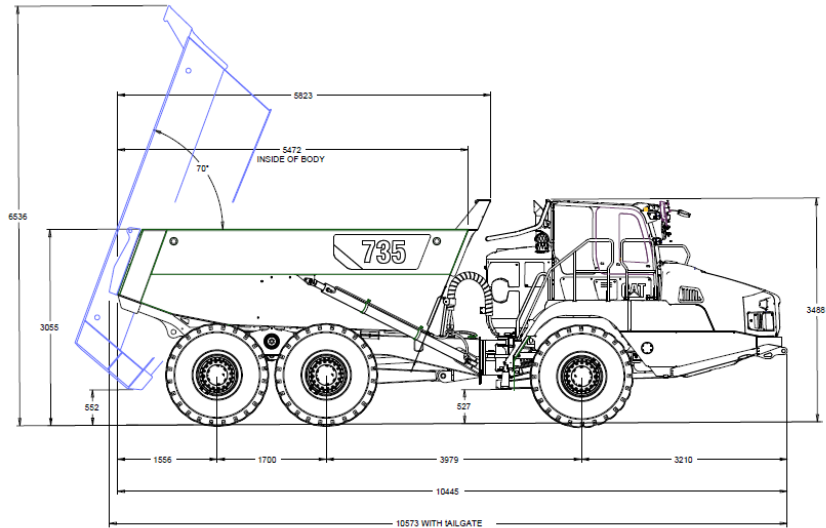
BODY PLATE

High strength brinell HB450 wear resistant steel

Front	7 mm	0.28 in
Chute	13 mm	0.51 in
Side	11 mm	0.43 in
Base	13 mm	0.51 in

FILL CAPACITIES

	L	Gal
Fuel Tank	412	108.8
Def Tank	20	5.3
Cooling System	83	21.9
Hydraulic System	110	29.1
Engine Crankcase	38	10
Transmission	56	12.3
Final Drives/Differential	125	33
Output Transfer Gear Box	25	5.5



Cat® 735 FEATURES & BENEFITS

**all comparisons made against previous model*

World Class, 100% new design cab

- *Designed from extensive, worldwide operator interviews, surveys and forums with 20% more interior space.*

Reduced in cab noise

- *7dB reduction to improve operator comfort.*

Cat Detect With Stability Assist

- *Audible and visual alert to operator if the tractor and/or trailer unit is approaching an un-safe angle during operation.*

Assisted Hoist System

- *Automatically raise and lower the dump body with the flick of switch. Up to 50% less operator actions required.*

Advanced Automatic Traction Control (AATC)

- *Proactively applies differential lock to prevent wheel spin.*

Automatic Retarder Control (ARC)

- *When engaged control of the retarder is managed entirely by the machine. No operator input is required*

Combined Hoist/Transmission Lever

- *Gear selection and hoist control in one lever and Park Brake incorporated.*

Automatic Climate Control System

- *Finer control over in-cab temperature with 12% more air flow.*

Seat Belt Indicator

- *Audible and visible alert if seatbelt is not worn.*

Operator Presence Switch

- *Machine will apply park brake if the operator is not seated when gear is selected .*

Emergency Brake Switch

- *Brings the machine to a safe stop in the unlikely event of both main and secondary brake circuits failing.*

Economy Mode

- *Provides an average 5% reduction on fuel consumption.*



Cat® 735 FEATURES & BENEFITS

Terrain Based Throttle Control

- *Smoothens throttle input over rough terrain to improve ride quality.*

Directional Shift Protection

- *Protects the powertrain when quickly moving from R>F or F>R.*

Durable Flexi Fender

- *Prevents permanent damage and reduces repair costs.*

Touchscreen Information Display

- *Monitor and configure machine options and view feed from rear view camera.*

Machine Wake Up

- *Initiates machine systems when ground level switch is pressed or cab door is opened.*

Low Profile Exhaust Stack

- *Reduces overall height and eliminates the need to remove the exhaust stack for transport.*

Improved Door

- *Increased visibility with more glass surface area and 36% Lighter to aid in ease of opening/closing.*

Integrated Payload Lights (when CPM option is fitted)

- *Wide angle beam lights on all cab roof corners provide clear visibility to loading tool operator and site controllers.*

Cab Mounted Mirrors

- *Excellent Visibility, reduced vibration and easily folded.*

Front Visibility Mirror

- *Gives clear view immediately in front of the machine.*

Redesigned Cab Structure

- *Increases glass area, improving rear quarter visibility when reversing.*

Sliding Windows (left and right)

- *Improved ventilation and communication.*

Large Storage Areas

- *Side storage box can be cooled or heated by HVAC, twin cup holders, hard hat hook and smaller storage pockets are all included.*

