



# 350

## Hydraulic Excavator

# Technical Specifications

Configurations and features may vary by region. Please consult your Cat® dealer for availability in your area.

## Table of Contents

<b>Specifications</b> .....	<b>2</b>
Engine .....	2
Swing Mechanism .....	2
Weights .....	2
Track .....	2
Drive .....	2
Hydraulic System .....	2
Service Refill Capacities .....	2
Standards .....	2
Sound Performance .....	3
Air Conditioning System .....	3
Operating Weights and Ground Pressures .....	3
Major Component Weights .....	4
Dimensions .....	5
Working Ranges .....	9
Reach Boom Lift Capacities .....	11
Mass Boom Lift Capacities .....	20
Typical Pass Match Guide .....	23
Bucket Specifications and Compatibility:	
Australia and New Zealand .....	24
Europe .....	25
Türkiye .....	26
North America .....	27
Chile and Colombia .....	28
Attachments Offering Guide:	
Australia and New Zealand .....	29
Europe .....	30
Türkiye .....	34
North America .....	37
Chile and Colombia .....	39
<b>Standard and Optional Equipment</b> .....	<b>41</b>
<b>Dealer Installed Kits and Attachments</b> .....	<b>43</b>
<b>Cab Options</b> .....	<b>44</b>
<b>350 Environmental Declaration</b> .....	<b>45</b>

# 350 Hydraulic Excavator Specifications

## Engine

Engine Model	Cat® C9.3B	
Net Power		
ISO 9249	308 kW	413 hp
ISO 9249 (DIN)	419 PS	
Engine Power		
ISO 14396	309 kW	414 hp
ISO 14396 (DIN)	420 PS	
Bore	115 mm	5 in
Stroke	149 mm	6 in
Displacement	9.3 L	568 in <sup>3</sup>
Biodiesel capability	Up to B20 <sup>(1)</sup>	

- Meets U.S. EPA Tier 4 Final, EU Stage V, and Japan 2014 (Tier 4 Final) emission standards.
- Recommended for use up to 4500 m (14,760 ft) altitude with engine power derate above 3000 m (9,840 ft).
- Advertised power is tested per the specified standard in effect at the time of manufacture.
- Net power advertised is the power available at the flywheel when the engine is equipped with fan, air intake system, exhaust system and alternator.
- Engine speed at 1,800 rpm.

<sup>(1)</sup>Cat diesel engines are required to use ULSD (ultra-low sulfur diesel fuel with 15 ppm of sulfur or less) and are compatible\* with ULSD blended with the following lower-carbon intensity fuels\*\* up to:

- ✓ 20% biodiesel FAME (fatty acid methyl ester)\*\*\*
- ✓ 100% renewable diesel, HVO (hydrotreated vegetable oil) and GTL (gas-to-liquid) fuels

Refer to guidelines for successful application. Please consult your Cat dealer or “Caterpillar Machine Fluids Recommendations” (SEBU6250) for details.

\* While Cat engines are compatible with these alternative fuels, some regions may not allow their use.

\*\* Tailpipe greenhouse gas emissions from lower-carbon intensity fuels are essentially the same as traditional fuels.

\*\*\* Engines with no aftertreatment devices are compatible with higher blends, up to 100% biodiesel (for use of blends higher than 20% biodiesel, consult your Cat dealer).

## Swing Mechanism

Swing Speed*	7.94 rpm	
Maximum Swing Torque	189 kN·m	139,275 lbf·ft

\*For CE-marked machine default value may be set lower.

## Weights

Operating Weight	46 000 kg	101,500 lb
• Reach boom, R2.9TB (9'6") stick, General Duty (GDC) 3.08 m <sup>3</sup> (4.03 yd <sup>3</sup> ) bucket, and 600 mm (24") double grouser shoes, Long Undercarriage.		
Operating Weight	46 800 kg	103,100 lb
• Reach boom, R3.35TB (11'0") stick, GDC 3.08 m <sup>3</sup> (4.03 yd <sup>3</sup> ) bucket, and 750 mm (30") triple grouser shoes, Long Undercarriage.		
Operating Weight	47 700 kg	105,100 lb
• Reach boom, R3.9TB (12'10") stick, GDC 3.08 m <sup>3</sup> (4.03 yd <sup>3</sup> ) bucket, and 900 mm (35") triple grouser shoes, Long Undercarriage.		

## Track

Standard Track Shoes Width	600 mm	24 in
Optional Track Shoes Width	750 mm	30 in
Optional Track Shoes Width	900 mm	35 in
Number of Shoes (each side)	52	
Number of Track Rollers (each side)	9	
Number of Carrier Rollers (each side)	2	

## Drive

Maximum Gradeability	35°/70%	
Maximum Travel Speed	4.5 km/h	2.8 mph
Maximum Drawbar Pull	352 kN	79,178 lbf

## Hydraulic System

Main System – Maximum Flow – Implement	779 L/min (389 × 2 pumps)	206 gal/min (103 × 2 pumps)
Maximum Pressure – Equipment – Implement	35 000 kPa	5,076 psi
Maximum Pressure – Equipment – Lift Mode	38 000 kPa	5,511 psi
Maximum Pressure – Travel	35 000 kPa	5,076 psi
Maximum Pressure – Swing	25 700 kPa	3,727 psi
Boom Cylinder – Bore	160 mm	6 in
Boom Cylinder – Stroke	1575 mm	62 in
Stick Cylinder – Bore	190 mm	7 in
Stick Cylinder – Stroke	1758 mm	69 in
TB Bucket Cylinder – Bore	160 mm	6 in
TB Bucket Cylinder – Stroke	1356 mm	53 in
UB Bucket Cylinder – Bore	170 mm	7 in
UB Bucket Cylinder – Stroke	1396 mm	55 in

## Service Refill Capacities

Fuel Tank Capacity	680 L	179.6 gal
Cooling System	48 L	12.7 gal
Engine Oil (with filter)	32 L	8.5 gal
Swing Drive	15 L	4.0 gal
Final Drive (each)	11 L	2.9 gal
Hydraulic System (including tank)	550 L	145.3 gal
Hydraulic Tank (including suction pipe)	217 L	57.3 gal
Diesel Exhaust Fluid (DEF) Tank	80 L	21.1 gal

## Standards

Brakes	ISO 10265:2008
Cab/Operator Protective Guards (OPG) (optional)	ISO 10262:1998 Level II
Cab/Rollover Protective Structure (ROPS)	ISO 12117-2:2008

# 350 Hydraulic Excavator Specifications

## Sound Performance

ISO 6395:2008 (external) 107 dB(A)

ISO 6396:2008 (inside cab) 75 dB(A)

- **External Sound** – The spectator sound power level is measured according to the test procedures and conditions specified in ISO 6395:2008 for a Caterpillar machine that is properly equipped and maintained. The measurements were conducted at 70% of the maximum engine cooling fan speed.
- **Internal Sound** – The operator sound pressure level is measured according to the test procedures and conditions specified in ISO 6396:2008 for a cab offered by Caterpillar, when properly installed and maintained and tested with the door and windows closed. The measurements were conducted at 70% of the maximum engine cooling fan speed.
- **Hearing protection** may be needed when operating with an open operator station and cab (when not properly maintained for doors/windows open) for extended periods or in noisy environment(s).

## Air Conditioning System

The air conditioning system on this machine contains the fluorinated greenhouse gas refrigerant R134a or R1234yf. See the label or instruction manual for identification of the gas.

- If equipped with R134a (Global Warming Potential = 1430), the system contains 1.000 kg (2.205 lb.) of refrigerant, which has a CO<sub>2</sub> equivalent of 1.430 metric tonnes (1.576 tons).
- If equipped with R1234yf (Global Warming Potential = 0.501), the system contains 0.810 kg (1.786 lb.) of refrigerant, which has a CO<sub>2</sub> equivalent of 0.001 metric tonnes (0.001 tons).

## Operating Weights and Ground Pressures

Base Machine Configurations	600 mm (24") Double Grouser Shoes		600 mm (24") HD Double Grouser Shoes		750 mm (30") Triple Grouser Shoes		900 mm (35") Triple Grouser Shoes	
	Weight kg (lb)	Ground Pressure kPa (psi)	Weight kg (lb)	Ground Pressure kPa (psi)	Weight kg (lb)	Ground Pressure kPa (psi)	Weight kg (lb)	Ground Pressure kPa (psi)
<b>Long Undercarriage</b>								
Reach Boom + R3.9 m (12'10") TB Stick + 3.08 m <sup>3</sup> (4.03 yd <sup>3</sup> ) GDC Bucket	46 300 (102,000)	80.1 (11.6)	46 900 (103,400)	81.2 (11.8)	46 900 (103,400)	65.1 (9.4)	47 700 (105,100)	55.2 (8.0)
Reach Boom + R3.35 m (11'0") TB Stick + 3.08 m <sup>3</sup> (4.03 yd <sup>3</sup> ) GDC Bucket	46 100 (101,700)	79.9 (11.6)	46 700 (103,000)	80.9 (11.7)	46 800 (103,100)	64.9 (9.4)	47 500 (104,800)	55.0 (8.0)
Reach Boom + R2.9 m (9'6") TB Stick + 3.08 m <sup>3</sup> (4.03 yd <sup>3</sup> ) GDC Bucket	46 000 (101,500)	79.7 (11.6)	46 700 (102,900)	80.8 (11.7)	46 700 (102,900)	64.8 (9.4)	47 500 (104,600)	54.9 (8.0)
Mass Boom + M3.0 m (9'10") UB Stick + 3.21 m <sup>3</sup> (4.20 yd <sup>3</sup> ) Severe Duty V-Edge (SDV) Bucket	47 200 (104,100)	81.7 (11.9)	47 800 (105,400)	82.8 (12.0)	47 800 (105,500)	66.4 (9.6)	48 600 (107,200)	56.2 (8.2)
Mass Boom + M2.5 m (8'2") UB Stick + 3.21 m <sup>3</sup> (4.20 yd <sup>3</sup> ) SDV Bucket	47 000 (103,700)	81.4 (11.8)	47 600 (105,000)	82.4 (12.0)	47 700 (105,100)	66.1 (9.6)	48 400 (106,800)	56.0 (8.1)

All operating weights include a 90% fuel tank with 75 kg (165 lb) operator.

# 350 Hydraulic Excavator Specifications

## Major Component Weights

	kg	lb
Base Machine Weight (with upperframe, undercarriage, counterweight, boom cylinders – does not include boom, stick, bucket, stick cylinder, bucket cylinder, tracks, fuel, operator)		
With Counterweight, Swing Frame, Base Frame with Track Rollers and Carrier Rollers for Long Undercarriage	30 870	68,050
Track Shoes:		
600 mm (24") Width, 15.5 mm (0.6") Thick, Double Grouser (PPR3) Track Shoes	5270	11,610
600 mm (24") Width, 19.5 mm (0.8") Thick, Double Grouser (PPR2) Track Shoes	5880	12,960
750 mm (30") Width, 15.5 mm (0.6") Thick, Triple Grouser (PPR3) Track Shoes	5910	13,030
900 mm (35") Width, 15.5 mm (0.6") Thick, Triple Grouser (PPR3) Track Shoes	6680	14,720
Two Boom Cylinders	760	1,680
Weight of 90% Fuel Tank and 75 kg (165 lb) Operator	630	1,380
Counterweight	9000	19,840
Swing Frame	4140	9,120
Long and Long Narrow Undercarriage:		
Base Frame with Track Rollers and Carrier Rollers	10 550	23,250
Booms (including lines, pins, stick cylinder):		
Reach Boom 6.9 m (22'8")	4370	9,640
Mass Boom 6.55 m (21'6")	4680	10,310
Sticks (including lines, pins, bucket cylinder, bucket linkage):		
Reach Stick R3.9TB (12'10")	2570	5,670
Reach Stick R3.35TB (11'0")	2420	5,330
Reach Stick R2.9TB (9'6")	2340	5,160
Mass Stick M3.0UB (9'10")	2800	6,170
Mass Stick M2.5UB (8'2")	2620	5,770
Buckets (without linkage):		
3.08 m <sup>3</sup> (4.03 yd <sup>3</sup> ) GDC	2570	5,670
3.21 m <sup>3</sup> (4.20 yd <sup>3</sup> ) SDV	2970	6,540
Quick Couplers (QC):		
CW Dedicated QC	760	1,660
Pin Grabber QC	950	2,090

# 350 Hydraulic Excavator Specifications

## Dimensions

All dimensions are approximate and may vary depending on bucket selection.



### Boom Options

Reach Boom  
6.9 m (22'8")

### Stick Options

R3.9TB (12'10")

Reach Stick  
R3.35TB (11'0")

R2.9TB (9'6")

#### 1 Machine Height:

Cab Height	3260 mm	10'8"	3260 mm	10'8"	3260 mm	10'8"
OPG Height	3400 mm	11'2"	3400 mm	11'2"	3400 mm	11'2"
Guardrails/Handrails Height	3400 mm	11'2"	3400 mm	11'2"	3400 mm	11'2"
With Boom/Stick/Bucket Installed	3700 mm	12'2"	3670 mm	12'0"	3900 mm	12'10"
With Boom/Stick Installed	3700 mm	12'2"	3530 mm	11'7"	3440 mm	11'3"
With Boom Installed	3110 mm	10'2"	3110 mm	10'2"	3110 mm	10'2"
With Boom/Stick/Bucket Installed (with auxiliary lines)	3700 mm	12'2"	3670 mm	12'0"	3900 mm	12'10"
With Boom/Stick Installed (with auxiliary lines)	3700 mm	12'2"	3530 mm	11'7"	3440 mm	11'3"
With Boom Installed (with auxiliary lines)	3110 mm	10'2"	3110 mm	10'2"	3110 mm	10'2"

#### 2 Machine Length:

With Boom/Stick/Bucket Installed	11 950 mm	39'2"	11 890 mm	39'0"	11 890 mm	39'0"
With Boom/Stick Installed	11 950 mm	39'2"	11 860 mm	38'11"	11 830 mm	38'10"
With Boom Installed	10 630 mm	34'11"	10 630 mm	34'11"	10 630 mm	34'11"
With Boom/Stick/Bucket Installed (with auxiliary lines)	11 950 mm	39'2"	11 890 mm	39'0"	11 890 mm	39'0"
With Boom/Stick Installed (with auxiliary lines)	11 950 mm	39'2"	11 860 mm	38'11"	11 830 mm	38'10"
With Boom Installed (with auxiliary lines)	10 630 mm	34'11"	10 630 mm	34'11"	10 630 mm	34'11"

#### 3 Upperframe Width without Walkways

3020 mm	9'11"	3020 mm	9'11"	3020 mm	9'11"
---------	-------	---------	-------	---------	-------

#### 4 Tail Swing Radius

3760 mm	12'4"	3760 mm	12'4"	3760 mm	12'4"
---------	-------	---------	-------	---------	-------

#### 5 Counterweight Clearance

1340 mm	4'5"	1340 mm	4'5"	1340 mm	4'5"
---------	------	---------	------	---------	------

#### 6 Ground Clearance

520 mm	1'8"	520 mm	1'8"	520 mm	1'8"
--------	------	--------	------	--------	------

#### Bucket Type

GDC

GDC

GDC

#### Bucket Capacity

3.08 m <sup>3</sup>	4.03 yd <sup>3</sup>	3.08 m <sup>3</sup>	4.03 yd <sup>3</sup>	3.08 m <sup>3</sup>	4.03 yd <sup>3</sup>
---------------------	----------------------	---------------------	----------------------	---------------------	----------------------

#### Bucket Tip Radius

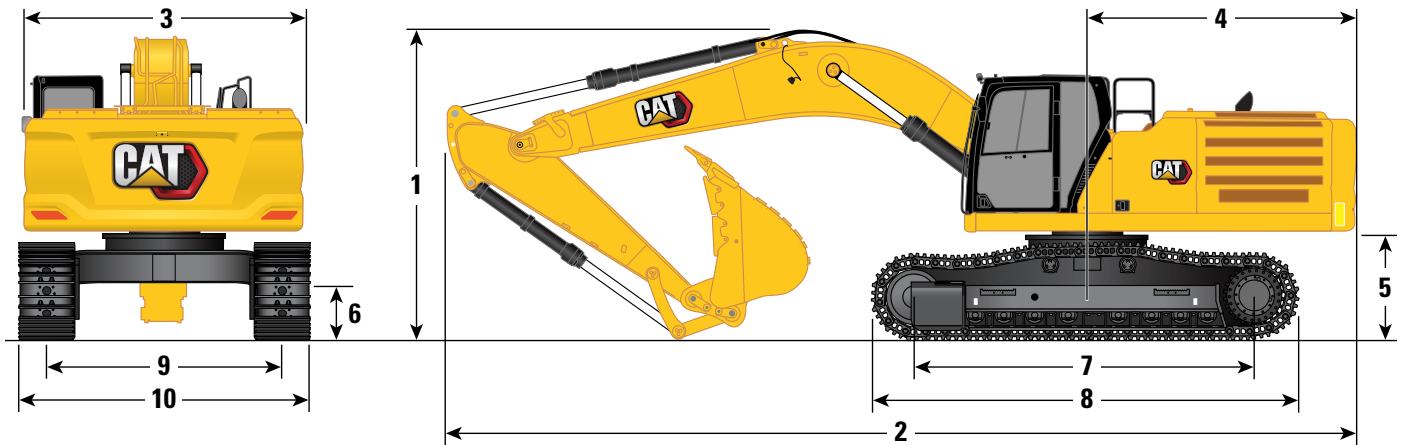
1890 mm	6'2"	1890 mm	6'2"	1890 mm	6'2"
---------	------	---------	------	---------	------

(continued on next page)

# 350 Hydraulic Excavator Specifications

## Dimensions *(continued)*

All dimensions are approximate and may vary depending on bucket selection.



### Boom Options

**Reach Boom  
6.9 m (22'8")**

### Stick Options

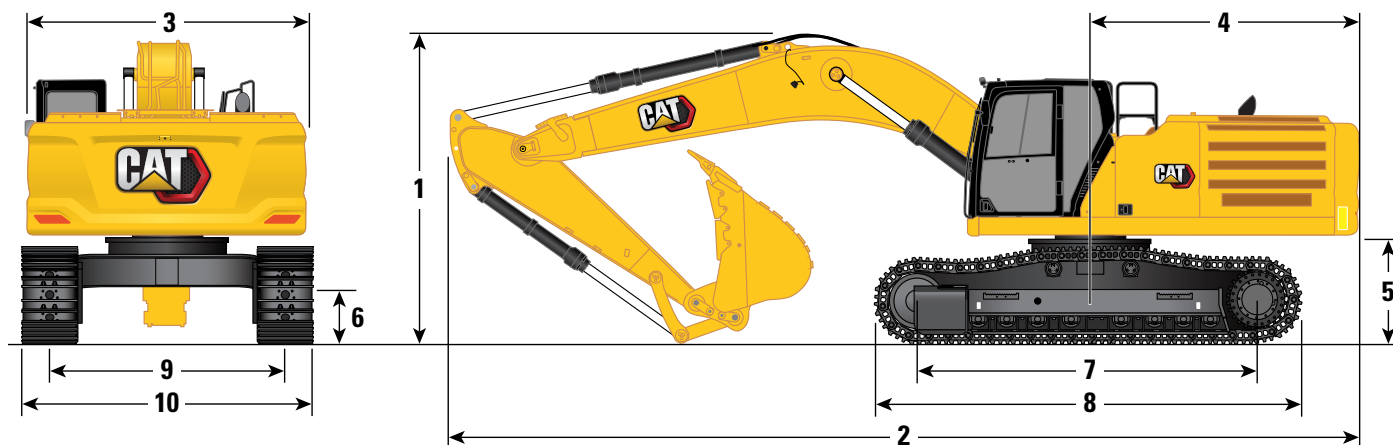
	<b>R3.9TB (12'10")</b>		<b>Reach Stick R3.35TB (11'0")</b>		<b>R2.9TB (9'6")</b>	
<b>7</b> Track Length – Length to Center of Rollers (long undercarriage)	4360 mm	14'4"	4360 mm	14'4"	4360 mm	14'4"
<b>8</b> Track Length (long undercarriage)	5400 mm	17'9"	5400 mm	17'9"	5400 mm	17'9"
<b>9</b> Track Gauge – Extended	2740 mm	9'0"	2740 mm	9'0"	2740 mm	9'0"
Track Width – Extended:						
600 mm (24") Shoes	3340 mm	10'11"	3340 mm	10'11"	3340 mm	10'11"
750 mm (30") Shoes	3490 mm	11'5"	3490 mm	11'5"	3490 mm	11'5"
900 mm (35") Shoes	3640 mm	11'11"	3640 mm	11'11"	3640 mm	11'11"
<b>10</b> Undercarriage Width (with steps) – Extended:						
600 mm (24") Shoes	3350 mm	11'0"	3350 mm	11'0"	3350 mm	11'0"
750 mm (30") Shoes	3500 mm	11'6"	3500 mm	11'6"	3500 mm	11'6"
900 mm (35") Shoes	3640 mm	11'11"	3640 mm	11'11"	3640 mm	11'11"
Bucket Type	GDC		GDC		GDC	
Bucket Capacity	3.08 m <sup>3</sup>	4.03 yd <sup>3</sup>	3.08 m <sup>3</sup>	4.03 yd <sup>3</sup>	3.08 m <sup>3</sup>	4.03 yd <sup>3</sup>
Bucket Tip Radius	1890 mm	6'2"	1890 mm	6'2"	1890 mm	6'2"

*(continued on next page)*

# 350 Hydraulic Excavator Specifications

## Dimensions *(continued)*

All dimensions are approximate and may vary depending on bucket selection.



### Boom Options

**Mass Boom**  
6.55 m (21'6")

### Stick Options

**Mass Stick**  
**M3.0UB (9'10")**      **M2.5UB (8'2")**

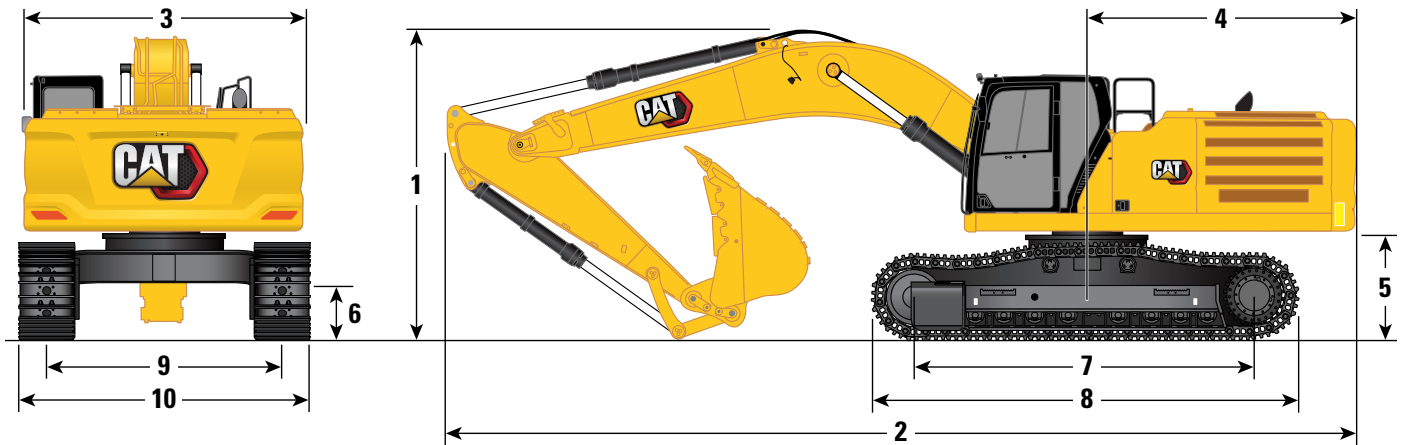
	M3.0UB (9'10")		M2.5UB (8'2")
<b>1</b> Machine Height:			
Cab Height	3260 mm	10'8"	3260 mm 10'8"
OPG Height	3400 mm	11'2"	3400 mm 11'2"
Guardrails/Handrails Height	3400 mm	11'2"	3400 mm 11'2"
With Boom/Stick/Bucket Installed	4220 mm	13'10"	4340 mm 14'3"
With Boom/Stick Installed	3780 mm	12'5"	3530 mm 11'7"
With Boom Installed	3190 mm	10'6"	3190 mm 10'6"
With Boom/Stick/Bucket Installed (with auxiliary lines)	4220 mm	13'10"	4340 mm 14'3"
With Boom/Stick Installed (with auxiliary lines)	3780 mm	12'5"	3530 mm 11'7"
With Boom Installed (with auxiliary lines)	3190 mm	10'6"	3190 mm 10'6"
<b>2</b> Machine Length:			
With Boom/Stick/Bucket Installed	11 630 mm	38'2"	11 830 mm 38'10"
With Boom/Stick Installed	11 510 mm	37'9"	11 580 mm 38'0"
With Boom Installed	10 270 mm	33'8"	10 270 mm 33'8"
With Boom/Stick/Bucket Installed (with auxiliary lines)	11 630 mm	38'2"	11 830 mm 38'10"
With Boom/Stick Installed (with auxiliary lines)	11 510 mm	37'9"	11 580 mm 38'0"
With Boom Installed (with auxiliary lines)	10 570 mm	34'8"	10 570 mm 34'8"
<b>3</b> Upperframe Width without Walkways	3020 mm	9'11"	3020 mm 9'11"
<b>4</b> Tail Swing Radius	3760 mm	12'4"	3760 mm 12'4"
<b>5</b> Counterweight Clearance	1340 mm	4'5"	1340 mm 4'5"
<b>6</b> Ground Clearance	520 mm	1'8"	520 mm 1'8"
Bucket Type	SDV		SDV
Bucket Capacity	3.21 m <sup>3</sup>	4.20 yd <sup>3</sup>	3.21 m <sup>3</sup> 4.20 yd <sup>3</sup>
Bucket Tip Radius	2070 mm	6'9"	2070 mm 6'9"

*(continued on next page)*

# 350 Hydraulic Excavator Specifications

## Dimensions *(continued)*

All dimensions are approximate and may vary depending on bucket selection.



### Boom Options

**Mass Boom**  
6.55 m (21'6")

### Stick Options

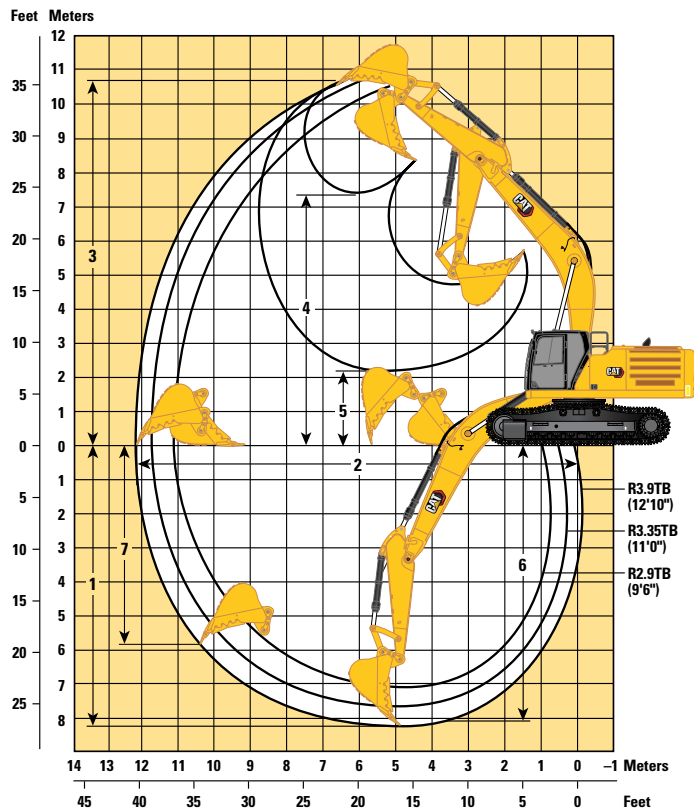
**Mass Stick**  
**M3.0UB (9'10")**      **M2.5UB (8'2")**

	M3.0UB (9'10")		M2.5UB (8'2")	
<b>7</b> Track Length – Length to Center of Rollers (long undercarriage)	4360 mm	14'4"	4360 mm	14'4"
<b>8</b> Track Length (long undercarriage)	5400 mm	17'9"	5400 mm	17'9"
<b>9</b> Track Gauge – Extended	2740 mm	9'0"	2740 mm	9'0"
Track Width – Extended:				
600 mm (24") Shoes	3340 mm	10'11"	3340 mm	10'11"
750 mm (30") Shoes	3490 mm	11'5"	3490 mm	11'5"
900 mm (35") Shoes	3640 mm	11'11"	3640 mm	11'11"
<b>10</b> Undercarriage Width (with steps) – Extended:				
600 mm (24") Shoes	3350 mm	11'0"	3350 mm	11'0"
750 mm (30") Shoes	3500 mm	11'6"	3500 mm	11'6"
900 mm (35") Shoes	3640 mm	11'11"	3640 mm	11'11"
Bucket Type	SDV		SDV	
Bucket Capacity	3.21 m <sup>3</sup>	4.20 yd <sup>3</sup>	3.21 m <sup>3</sup>	4.20 yd <sup>3</sup>
Bucket Tip Radius	2070 mm	6'9"	2070 mm	6'9"

# 350 Hydraulic Excavator Specifications

## Working Ranges

All dimensions are approximate and may vary depending on bucket selection.



### Boom Options

**Reach Boom  
6.9 m (22'8")**

### Stick Options

**R3.9TB (12'10")**

**Reach Stick  
R3.35TB (11'0")**

**R2.9TB (9'6")**

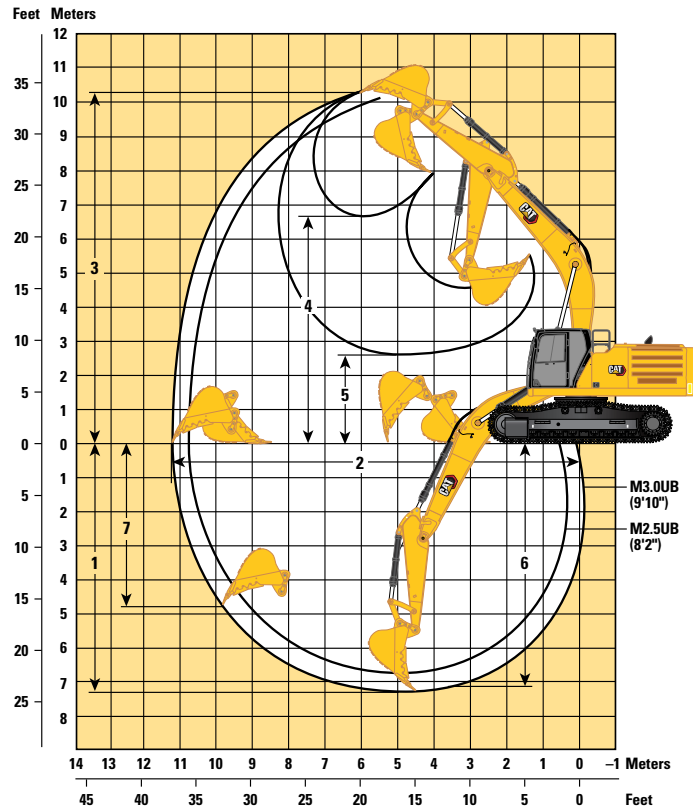
	R3.9TB (12'10")		Reach Stick R3.35TB (11'0")		R2.9TB (9'6")	
<b>1</b> Maximum Digging Depth	8210 mm	26'11"	7660 mm	25'2"	7210 mm	23'8"
<b>2</b> Maximum Reach at Ground Line	12 150 mm	39'10"	11 730 mm	38'6"	11 310 mm	37'1"
<b>3</b> Maximum Cutting Height	10 690 mm	35'1"	10 790 mm	35'5"	10 610 mm	34'10"
<b>4</b> Maximum Loading Height	7390 mm	24'3"	7410 mm	24'4"	7230 mm	23'9"
<b>5</b> Minimum Loading Height	2190 mm	7'2"	2740 mm	9'0"	3190 mm	10'6"
<b>6</b> Maximum Depth Cut for 2440 mm (8'0") Level Bottom	8080 mm	26'6"	7520 mm	24'8"	7050 mm	23'2"
<b>7</b> Maximum Vertical Wall Digging Depth	5840 mm	19'2"	5710 mm	18'9"	5300 mm	17'5"
Bucket Digging Force (ISO)	268 kN	60,160 lbf	268 kN	60,160 lbf	268 kN	60,160 lbf
Stick Digging Force (ISO)	183 kN	41,090 lbf	199 kN	44,790 lbf	219 kN	49,200 lbf
Bucket Type	GDC		GDC		GDC	
Bucket Capacity	3.08 m <sup>3</sup>	4.03 yd <sup>3</sup>	3.08 m <sup>3</sup>	4.03 yd <sup>3</sup>	3.08 m <sup>3</sup>	4.03 yd <sup>3</sup>
Bucket Tip Radius	1890 mm	6'2"	1890 mm	6'2"	1890 mm	6'2"

(continued on next page)

# 350 Hydraulic Excavator Specifications

## Working Ranges (continued)

All dimensions are approximate and may vary depending on bucket selection.



### Boom Options

**Mass Boom**  
6.55 m (21'6")

### Stick Options

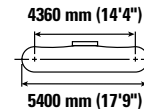
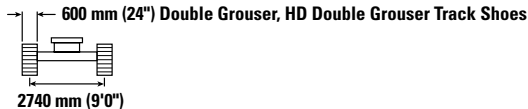
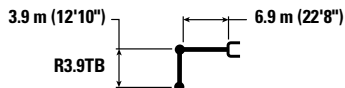
**Mass Stick**  
M3.0UB (9'10")      M2.5UB (8'2")

	M3.0UB (9'10")		M2.5UB (8'2")	
<b>1</b> Maximum Digging Depth	7300 mm	23'11"	6800 mm	22'4"
<b>2</b> Maximum Reach at Ground Line	11 270 mm	37'0"	10 800 mm	35'5"
<b>3</b> Maximum Cutting Height	10 260 mm	33'8"	10 070 mm	33'0"
<b>4</b> Maximum Loading Height	6730 mm	22'1"	6530 mm	21'5"
<b>5</b> Minimum Loading Height	2570 mm	8'5"	3070 mm	10'1"
<b>6</b> Maximum Depth Cut for 2440 mm (8'0") Level Bottom	7160 mm	23'6"	6640 mm	21'9"
<b>7</b> Maximum Vertical Wall Digging Depth	4800 mm	15'9"	4360 mm	14'4"
Bucket Digging Force (ISO)	291 kN	65,480 lbf	291 kN	65,480 lbf
Stick Digging Force (ISO)	211 kN	47,510 lbf	240 kN	53,850 lbf
Bucket Type	SDV		SDV	
Bucket Capacity	3.21 m <sup>3</sup>	4.20 yd <sup>3</sup>	3.21 m <sup>3</sup>	4.20 yd <sup>3</sup>
Bucket Tip Radius	2070 mm	6'9"	2070 mm	6'9"

# 350 Hydraulic Excavator Specifications

## Reach Boom Lift Capacities – Counterweight: 9.0 mt (19,842 lb) – without Bucket, Heavy Lift: On

Long Undercarriage



Reach	Unit	1500 mm/5'0"		3000 mm/10'0"		4500 mm/15'0"		6000 mm/20'0"		7500 mm/25'0"		9000 mm/30'0"		mm ft/in			
		kg	lb	kg	lb	kg	lb	kg	lb	kg	lb	kg	lb	kg	lb	mm	ft/in
9000 mm 30'0"	kg														*7900	*7900	7870
	lb														*17,500	*17,500	25'4"
7500 mm 25'0"	kg														*7550	*7550	8970
	lb														*16,650	*16,650	29'2"
6000 mm 20'0"	kg									*10 800	10 500	*10 150	7750	*7450	6800	9720	
	lb									*23,500	22,550	*22,250	16,650	*16,450	15,050	31'8"	
4500 mm 15'0"	kg							*13 800	*13 800	*11 850	10 100	*10 650	7550	*7600	6150	10 190	
	lb							*29,750	*29,750	*25,650	21,700	*23,200	16,250	*16,700	13,600	33'4"	
3000 mm 10'0"	kg					*22 000	20 300	*16 000	13 300	*13 050	9600	*11 300	7300	*7950	5800	10 420	
	lb					*47,200	43,850	*34,550	28,750	*28,250	20,700	*24,550	15,700	*17,450	12,750	34'1"	
1500 mm 5'0"	kg					*25 200	18 900	*17 900	12 550	*14 150	9200	11 400	7050	*8550	5650	10 430	
	lb					*54,300	40,700	*38,700	27,050	*30,650	19,800	24,500	15,200	*18,750	12,450	34'2"	
0 mm 0'0"	kg					*23 800	18 250	*18 950	12 050	14 650	8850	11 150	6850	9300	5750	10 220	
	lb			*20,600	*20,600	*55,100	39,200	*41,050	25,950	31,450	19,050	24,000	14,750	20,450	12,600	33'6"	
-1500 mm -5'0"	kg			*15 350	*15 350	*25 600	18 050	*19 100	11 800	14 400	8650	11 050	6750	9850	6050	9770	
	lb			*34,550	*34,550	*55,550	38,750	*41,300	25,400	31,000	18,650	23,800	14,550	21,700	13,350	31'11"	
-3000 mm -10'0"	kg			*22 350	*22 350	*23 850	18 100	*18 200	11 750	*14 300	8650	11 050	6800	11 000	6750	9040	
	lb	*38,650	*38,650	*50,450	*50,450	*51,600	38,950	*39,300	25,350	*30,850	18,600			24,350	14,900	29'6"	
-4500 mm -15'0"	kg			*27 400	*27 400	*20 650	18 450	*16 000	11 950	*12 300	8800			*11 150	8150	7970	
	lb			*59,100	*59,100	*44,500	39,650	*34,350	25,750	*26,150	18,950			*24,550	18,100	25'11"	
-6000 mm -20'0"	kg					*15 200	*15 200	*11 500	*11 500					*10 450	*10 450	6370	
	lb					*32,100	*32,100	*23,700	*23,700					*22,850	*22,850	20'5"	



ISO 10567:2007



\* Indicates that the load is limited by hydraulic lifting capacity rather than tipping load. The above loads are in compliance with hydraulic excavator lift capacity standard ISO 10567:2007. They do not exceed 87% of hydraulic lifting capacity or 75% of tipping load. Weight of all lifting accessories must be deducted from the above lifting capacities. Lifting capacities are based on the machine standing on a firm, uniform supporting surface. The use of a work tool attachment point to handle/lift objects, could affect the machine lift performance.

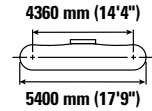
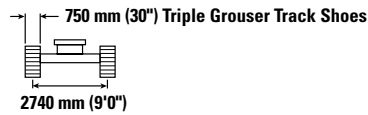
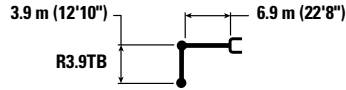
Lift capacity stays with ±5% for all available track shoes.

Always refer to the appropriate Operation and Maintenance Manual for specific product information.

# 350 Hydraulic Excavator Specifications

## Reach Boom Lift Capacities – Counterweight: 9.0 mt (19,842 lb) – without Bucket, Heavy Lift: On

Long Undercarriage



Reach Boom Length mm ft/in	kg lb	1500 mm/5'0"		3000 mm/10'0"		4500 mm/15'0"		6000 mm/20'0"		7500 mm/25'0"		9000 mm/30'0"		mm ft/in		
		kg lb	kg lb	kg lb	kg lb	kg lb	kg lb	kg lb	kg lb	kg lb	kg lb	kg lb	kg lb	kg lb	kg lb	mm ft/in
9000 mm 30'0"	kg lb													*7900 *17,500	*7900 *17,500	7870 25'4"
7500 mm 25'0"	kg lb													*7550 *16,650	*7550 *16,650	8970 29'2"
6000 mm 20'0"	kg lb									*10 800 *23,500	10 650 22,850	*10 150 *22,250	7900 16,900	*7450 *16,450	6900 15,300	9720 31'8"
4500 mm 15'0"	kg lb							*13 800 *29,750	*13 800 *29,750	*11 850 *25,650	10 250 22,000	*10 650 *23,200	7700 16,500	*7600 *16,700	6250 13,800	10 190 33'4"
3000 mm 10'0"	kg lb					*22 000 *47,200	20 600 44,450	*16 000 *34,550	13 500 29,150	*13 050 *28,250	9750 21,050	*11 300 *24,550	7450 15,950	*7950 *17,450	5900 13,000	10 420 34'1"
1500 mm 5'0"	kg lb					*25 200 *54,300	19 150 41,300	*17 900 *38,700	12 750 27,500	*14 150 *30,650	9350 20,100	11 550 24,900	7200 15,450	*8550 *18,750	5750 12,650	10 430 34'2"
0 mm 0'0"	kg lb			*20,600 *20,600	*20,600 *20,600	*23 800 *55,100	18 500 39,800	*18 950 *41,050	12 250 26,350	*14 850 *32,000	9000 19,400	11 350 24,450	7000 15,000	9450 20,800	5850 12,850	10 220 33'6"
-1500 mm -5'0"	kg lb			*15 350 *34,550	*15 350 *34,550	*25 600 *55,550	18 350 39,400	*19 100 *41,300	12 000 25,850	14 650 31,550	8800 18,950	11 250 24,200	6850 14,800	10 000 22,100	6150 13,600	9770 31'11"
-3000 mm -10'0"	kg lb	*38,650 *38,650	*38,650 *38,650	*22 350 *50,450	*22 350 *50,450	*23 850 *51,600	18 400 39,550	*18 200 *39,300	11 950 25,750	*14 300 *30,850	8750 18,900	*11 200 24,500	6900 15,150	*11 150 *24,500	6850 15,150	9040 29'6"
-4500 mm -15'0"	kg lb			*27 400 *59,100	*27 400 *59,100	*20 650 *44,500	18 700 40,250	*16 000 *34,350	12 150 26,150	*12 300 *26,150	8950 19,300			*11 150 *24,550	8250 18,400	7970 25'11"
-6000 mm -20'0"	kg lb					*15 200 *32,100	*15 200 *32,100	*11 500 *23,700	*11 500 *23,700					*10 450 *22,850	*10 450 *22,850	6370 20'5"



ISO 10567:2007



\* Indicates that the load is limited by hydraulic lifting capacity rather than tipping load. The above loads are in compliance with hydraulic excavator lift capacity standard ISO 10567:2007. They do not exceed 87% of hydraulic lifting capacity or 75% of tipping load. Weight of all lifting accessories must be deducted from the above lifting capacities. Lifting capacities are based on the machine standing on a firm, uniform supporting surface. The use of a work tool attachment point to handle/lift objects, could affect the machine lift performance.

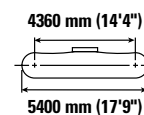
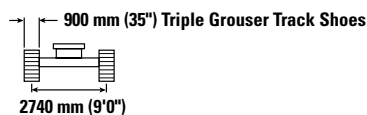
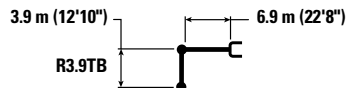
Lift capacity stays with ±5% for all available track shoes.

Always refer to the appropriate Operation and Maintenance Manual for specific product information.

# 350 Hydraulic Excavator Specifications

## Reach Boom Lift Capacities – Counterweight: 9.0 mt (19,842 lb) – without Bucket, Heavy Lift: On

Long Undercarriage



Reach Boom Length	Unit	1500 mm/5'0"		3000 mm/10'0"		4500 mm/15'0"		6000 mm/20'0"		7500 mm/25'0"		9000 mm/30'0"		mm ft/in		
		kg	lb	kg	lb	kg	lb	kg	lb	kg	lb	kg	lb	kg	lb	mm
9000 mm	kg														*7900	7870
30'0"	lb														*17,500	17,500
7500 mm	kg														*7550	8970
25'0"	lb														*16,650	16,650
6000 mm	kg														*10 800	7000
20'0"	lb														*23,500	23,100
4500 mm	kg														*10 150	7950
15'0"	lb														*22,250	17,100
3000 mm	kg														*10 650	7800
10'0"	lb														*23,200	16,700
1500 mm	kg														*7600	6350
5'0"	lb														*16,700	13,950
0 mm	kg														*7950	5950
0'0"	lb														*18,750	12,850
-1500 mm	kg														*9450	5900
-5'0"	lb														*20,800	13,000
-3000 mm	kg														*10 150	6250
-10'0"	lb														*22,400	13,750
-4500 mm	kg														*11 150	6950
-15'0"	lb														*24,500	15,350
-6000 mm	kg														*10 450	6370
-20'0"	lb														*22,850	20,500



ISO 10567:2007



\* Indicates that the load is limited by hydraulic lifting capacity rather than tipping load. The above loads are in compliance with hydraulic excavator lift capacity standard ISO 10567:2007. They do not exceed 87% of hydraulic lifting capacity or 75% of tipping load. Weight of all lifting accessories must be deducted from the above lifting capacities. Lifting capacities are based on the machine standing on a firm, uniform supporting surface. The use of a work tool attachment point to handle/lift objects, could affect the machine lift performance.

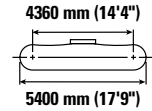
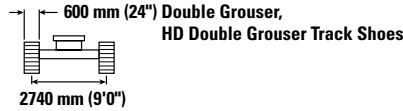
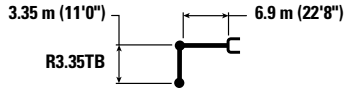
Lift capacity stays with ±5% for all available track shoes.

Always refer to the appropriate Operation and Maintenance Manual for specific product information.

# 350 Hydraulic Excavator Specifications

## Reach Boom Lift Capacities – Counterweight: 9.0 mt (19,842 lb) – without Bucket, Heavy Lift: On

Long Undercarriage



Reach	Unit	3000 mm/10'0"		4500 mm/15'0"		6000 mm/20'0"		7500 mm/25'0"		9000 mm/30'0"		mm ft/in		
		kg lb	kg lb	kg lb	kg lb	kg lb	kg lb	kg lb	kg lb	kg lb	kg lb	kg lb	kg lb	
9000 mm 30'0"	kg lb											*9000 *20,000	*9000 *20,000	7310 23'6"
7500 mm 25'0"	kg lb							*11 050 *24,250	10 550 22,650			*8500 *18,700	*8500 *18,700	8490 27'7"
6000 mm 20'0"	kg lb							*11 550 *25,200	10 350 22,250	*10 750 *20,300	7650 16,400	*18,350 *18,350	*16,150 *16,150	30'3"
4500 mm 15'0"	kg lb			*19 250 *41,300	*19 250 *41,300	*14 800 *31,950	13 950 30,100	*12 550 *27,200	10 000 21,500	*11 200 *24,450	7500 16,150	*8450 *18,550	6550 14,500	9770 31'11"
3000 mm 10'0"	kg lb			*23 700 *50,900	19 800 42,800	*16 900 *36,550	13 150 28,350	*13 650 *29,550	9550 20,550	11 600 25,000	7300 15,650	*8800 *19,300	6150 13,600	10 010 32'9"
1500 mm 5'0"	kg lb			*18 600 *44,450	*18 600 *40,250	*18 550 *40,150	12 500 26,900	*14 600 *31,650	9150 19,750	11 400 24,500	7050 15,200	*9400 *20,700	6050 13,300	10 020 32'10"
0 mm 0'0"	kg lb			*20 950 *48,650	18 300 39,350	*19 300 *41,750	12 050 26,000	14 650 31,500	8900 19,150	11 200 24,150	6900 14,900	9950 21,850	6150 13,550	9800 32'1"
-1500 mm -5'0"	kg lb	*14 950 *33,750	*14 950 *33,750	*25 100 *54,450	18 250 39,200	*19 000 *41,200	11 900 25,650	14 500 31,200	8750 18,850	11 150 24,000	6850 14,800	10 600 23,400	6550 14,450	9330 30'6"
-3000 mm -10'0"	kg lb	*23 900 *53,950	*23 900 *53,950	*22 800 *49,400	18 400 39,600	*17 700 *38,250	11 950 25,750	*13 900 *29,900	8800 18,950			*11 450 *25,250	7400 16,400	8570 27'11"
-4500 mm -15'0"	kg lb	*24 000 *51,750	*24 000 *51,750	*19 000 *40,850	18 800 40,450	*14 900 *31,800	12 200 26,300					*11 150 *24,450	9150 20,450	7420 24'1"



ISO 10567:2007



\* Indicates that the load is limited by hydraulic lifting capacity rather than tipping load. The above loads are in compliance with hydraulic excavator lift capacity standard ISO 10567:2007. They do not exceed 87% of hydraulic lifting capacity or 75% of tipping load. Weight of all lifting accessories must be deducted from the above lifting capacities. Lifting capacities are based on the machine standing on a firm, uniform supporting surface. The use of a work tool attachment point to handle/lift objects, could affect the machine lift performance.

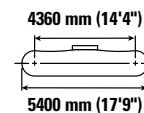
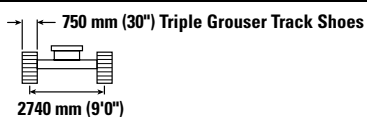
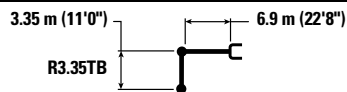
Lift capacity stays with ±5% for all available track shoes.

Always refer to the appropriate Operation and Maintenance Manual for specific product information.

# 350 Hydraulic Excavator Specifications

## Reach Boom Lift Capacities – Counterweight: 9.0 mt (19,842 lb) – without Bucket, Heavy Lift: On

Long Undercarriage



Reach	Unit	3000 mm/10'0"		4500 mm/15'0"		6000 mm/20'0"		7500 mm/25'0"		9000 mm/30'0"		mm		ft/in
		kg	lb	kg	lb	kg	lb	kg	lb	kg	lb	mm	mm	
9000 mm 30'0"	kg lb											*8250 *18,300	*8250 *18,300	7310 23'6"
7500 mm 25'0"	kg lb							*10 000 *21,900	*10 000 *21,900			*7750 *17,100	*7750 *17,100	8490 27'7"
6000 mm 20'0"	kg lb							*10 450 *22,750	*10 450 *22,550	*9800 *18,550	7800 16,650	*16,750 *16,750	*16,400 *16,400	30'3"
4500 mm 15'0"	kg lb			*17 450 *37,450	*17 450 *37,450	*13 400 *28,900	*13 400 *28,900	*11 300 *24,550	10 100 21,800	*10 100 *22,000	7650 16,400	*7700 *16,950	6650 14,700	9770 31'11"
3000 mm 10'0"	kg lb			*21 450 *46,000	20 100 43,400	*15 300 *33,000	13 350 28,750	*12 300 *26,650	9700 20,900	*10 600 *23,000	7400 15,900	*8000 *17,650	6300 13,800	10 010 32'9"
1500 mm 5'0"	kg lb			*17 550 *41,950	*17 550 40,850	*16 750 *36,200	12 650 27,300	*13 150 *28,500	9300 20,050	*11 000 *23,850	7200 15,450	*8600 *18,900	6150 13,500	10 020 32'10"
0 mm 0'0"	kg lb			*19 800 *45,950	18 600 39,950	*17 400 *37,650	12 250 26,450	*13 600 *29,500	9050 19,450	*11 150 *24,150	7050 15,150	*9500 *20,950	6250 13,750	9800 32'1"
-1500 mm -5'0"	kg lb	*14 100 *31,800	*14 100 *31,800	*22 600 *49,050	18 550 39,850	*17 150 *37,100	12 100 26,050	*13 500 *29,150	8900 19,200	*10 800 *23,200	7000 15,050	*10 250 *22,550	6650 14,700	9330 30'6"
-3000 mm -10'0"	kg lb	*22 550 *50,950	*22 550 *50,950	*20 500 *44,450	18 700 40,200	*15 900 *34,400	12 150 26,150	*12 500 *26,850	8950 19,250			*10 250 *22,600	7550 16,650	8570 27'11"
-4500 mm -15'0"	kg lb	*21 500 *46,300	*21 500 *46,300	*17 050 *36,650	*17 050 *36,650	*13 350 *28,500	12 400 26,750					*9950 *21,850	9300 20,800	7420 24'1"



ISO 10567:2007



\* Indicates that the load is limited by hydraulic lifting capacity rather than tipping load. The above loads are in compliance with hydraulic excavator lift capacity standard ISO 10567:2007. They do not exceed 87% of hydraulic lifting capacity or 75% of tipping load. Weight of all lifting accessories must be deducted from the above lifting capacities. Lifting capacities are based on the machine standing on a firm, uniform supporting surface. The use of a work tool attachment point to handle/lift objects, could affect the machine lift performance.

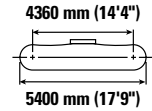
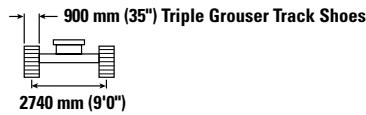
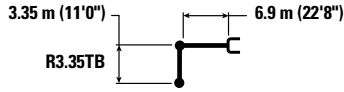
Lift capacity stays with ±5% for all available track shoes.

Always refer to the appropriate Operation and Maintenance Manual for specific product information.

# 350 Hydraulic Excavator Specifications

## Reach Boom Lift Capacities – Counterweight: 9.0 mt (19,842 lb) – without Bucket, Heavy Lift: On

Long Undercarriage



Reach Boom Length	Unit	3000 mm/10'0"		4500 mm/15'0"		6000 mm/20'0"		7500 mm/25'0"		9000 mm/30'0"		mm ft/in		
		kg lb	kg lb	kg lb	kg lb	kg lb	kg lb	kg lb	kg lb	kg lb	kg lb	kg lb	kg lb	
9000 mm 30'0"	kg lb											*9000 *20,000	*9000 *20,000	7310 23'6"
7500 mm 25'0"	kg lb							*11 050 *24,250	10 800 23,200			*8500 *18,700	*8500 *18,700	8490 27'7"
6000 mm 20'0"	kg lb							*11 550 *25,200	10 600 22,800	*10 750 *20,300	7850 16,850	*18,350 *18,350	16,550 16,550	30'3"
4500 mm 15'0"	kg lb			*19 250 *41,300	*19 250 *41,300	*14 800 *31,950	14 300 30,850	*12 550 *27,200	10 250 22,050	*11 200 *24,450	7700 16,550	*8450 *18,550	6750 14,900	9770 31'11"
3000 mm 10'0"	kg lb			*23 700 *50,900	20 350 43,900	*16 900 *36,550	13 500 29,100	*13 650 *29,550	9800 21,150	*11 750 *25,550	7500 16,100	*8800 *19,300	6350 14,000	10 010 32'9"
1500 mm 5'0"	kg lb			*18 600 *44,450	*18 600 41,350	*18 550 *40,150	12 800 27,650	*14 600 *31,650	9400 20,300	11 700 25,200	7300 15,650	*9400 *20,700	6250 13,700	10 020 32'10"
0 mm 0'0"	kg lb			*20 950 *48,650	18 800 40,450	*19 300 *41,750	12 400 26,750	15 100 32,450	9150 19,700	11 550 24,850	7100 15,350	10 250 22,550	6350 13,950	9800 32'1"
-1500 mm -5'0"	kg lb	*14 950 *33,750	*14 950 *33,750	*25 100 *54,450	18 750 40,350	*19 000 *41,200	12 250 26,400	14 950 32,150	9000 19,400	11 500 24,750	7050 15,250	10 950 24,150	6750 14,900	9330 30'6"
-3000 mm -10'0"	kg lb	*23 900 *53,950	*23 900 *53,950	*22 800 *49,400	18 950 40,700	*17 700 *38,250	12 300 26,500	*13 900 *29,900	9050 19,500			*11 450 *25,250	7600 16,850	8570 27'11"
-4500 mm -15'0"	kg lb	*24 000 *51,750	*24 000 *51,750	*19 000 *40,850	*19 000 *40,850	*14 900 *31,800	12 550 27,050					*11 150 *24,450	9450 21,050	7420 24'1"



ISO 10567:2007



\* Indicates that the load is limited by hydraulic lifting capacity rather than tipping load. The above loads are in compliance with hydraulic excavator lift capacity standard ISO 10567:2007. They do not exceed 87% of hydraulic lifting capacity or 75% of tipping load. Weight of all lifting accessories must be deducted from the above lifting capacities. Lifting capacities are based on the machine standing on a firm, uniform supporting surface. The use of a work tool attachment point to handle/lift objects, could affect the machine lift performance.

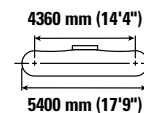
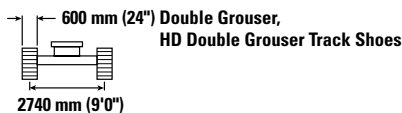
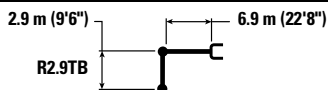
Lift capacity stays with ±5% for all available track shoes.

Always refer to the appropriate Operation and Maintenance Manual for specific product information.

# 350 Hydraulic Excavator Specifications

## Reach Boom Lift Capacities – Counterweight: 9.0 mt (19,842 lb) – without Bucket, Heavy Lift: On

Long Undercarriage



Reach	Unit	3000 mm/10'0"		4500 mm/15'0"		6000 mm/20'0"		7500 mm/25'0"		9000 mm/30'0"		mm ft/in		
		kg lb	kg lb	kg lb	kg lb	kg lb	kg lb	kg lb	kg lb	kg lb	kg lb	kg lb	kg lb	mm ft/in
9000 mm 30'0"	kg lb											*10 750 *23,900	*10 750 *23,900	6730 21'6"
7500 mm 25'0"	kg lb							*11 750 *25,900	10 400 22,300			*10 050 *22,200	9300 20,900	8000 25'11"
6000 mm 20'0"	kg lb					*13 700 *29,650	*13 700 *29,650	*12 150 *26,500	10 250 22,000			*9850 *21,700	7800 17,350	8830 28'9"
4500 mm 15'0"	kg lb			*20 750 *44,400	*20 750 *44,400	*15 550 *33,600	13 750 29,700	*13 050 *28,300	9900 21,300	*11 650 *25,300	7450 16,000	*10 000 *22,000	7000 15,500	9350 30'7"
3000 mm 10'0"	kg lb			*19 050 *49,700	*19 050 *41,800	*17 550 *37,900	13 000 28,000	*14 050 *30,500	9500 20,400	11 600 24,900	7250 15,600	*10 450 *22,950	6600 14,500	9600 31'5"
1500 mm 5'0"	kg lb			*13 650 *33,550	*13 650 *33,550	*18 950 *41,000	12 400 26,700	*14 900 *32,100	9150 19,650	11 400 24,500	7050 15,200	10 350 22,750	6450 14,150	9610 31'6"
0 mm 0'0"	kg lb			*19 500 *45,500	18 300 39,350	*19 400 *41,950	12 050 26,000	14 650 31,550	8900 19,150	11 250 24,200	6950 14,950	10 600 23,400	6600 14,500	9370 30'8"
-1500 mm -5'0"	kg lb	*15 100 *34,250	*15 100 *34,250	*24 300 *52,800	18 350 39,450	*18 800 *40,700	11 950 25,750	14 550 31,300	8800 19,000			11 450 *25,250	7050 15,600	8880 29'1"
-3000 mm -10'0"	kg lb	*26 500 *57,900	*26 500 *57,900	*21 650 *46,900	18 600 39,950	*17 100 *36,900	12 050 26,000	*13 350 *28,600	8900 19,200			*11 900 *26,150	8100 17,950	8080 26'4"
-4500 mm -15'0"	kg lb			*17 300 *37,150	*17 300 *37,150	*13 650 *28,950	12 400 26,750					*11 250 *24,650	10 400 23,250	6850 22'2"



ISO 10567:2007



\* Indicates that the load is limited by hydraulic lifting capacity rather than tipping load. The above loads are in compliance with hydraulic excavator lift capacity standard ISO 10567:2007. They do not exceed 87% of hydraulic lifting capacity or 75% of tipping load. Weight of all lifting accessories must be deducted from the above lifting capacities. Lifting capacities are based on the machine standing on a firm, uniform supporting surface. The use of a work tool attachment point to handle/lift objects, could affect the machine lift performance.

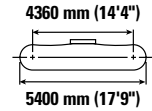
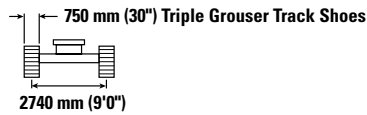
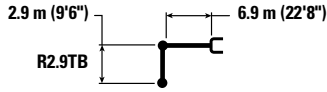
Lift capacity stays with ±5% for all available track shoes.

Always refer to the appropriate Operation and Maintenance Manual for specific product information.

# 350 Hydraulic Excavator Specifications

## Reach Boom Lift Capacities – Counterweight: 9.0 mt (19,842 lb) – without Bucket, Heavy Lift: On

Long Undercarriage



		3000 mm/10'0"		4500 mm/15'0"		6000 mm/20'0"		7500 mm/25'0"		9000 mm/30'0"		mm ft/in		
9000 mm 30'0"	kg lb											*10 750 *23,900	*10 750 *23,900	6730 21'6"
7500 mm 25'0"	kg lb							*11 750 *25,900	10 550 22,650			*10 050 *22,200	9450 21,200	8000 25'11"
6000 mm 20'0"	kg lb					*13 700 *29,650	*13 700 *29,650	*12 150 *26,500	10 400 22,300			*9850 *21,700	7950 17,650	8830 28'9"
4500 mm 15'0"	kg lb			*20 750 *44,400	*20 750 *44,400	*15 550 *33,600	13 950 30,100	*13 050 *28,300	10 050 21,600	*11 650 *25,450	7550 16,250	*10 000 *22,000	7100 15,700	9350 30'7"
3000 mm 10'0"	kg lb			*19 050 *49,700	*19 050 42,400	*17 550 *37,900	13 150 28,450	*14 050 *30,500	9600 20,750	11 750 25,300	7350 15,850	*10 450 *22,950	6700 14,750	9600 31'5"
1500 mm 5'0"	kg lb			*13 650 *33,550	*13 650 *33,550	*18 950 *41,000	12 600 27,100	*14 900 *32,250	9250 20,000	11 550 24,900	7200 15,450	10 500 23,150	6550 14,400	9610 31'6"
0 mm 0'0"	kg lb			*19 500 *45,500	18 600 40,000	*19 400 *41,950	12 250 26,400	14 900 32,050	9050 19,500	11 450 24,600	7050 15,200	10 800 23,750	6700 14,750	9370 30'8"
-1500 mm -5'0"	kg lb	*15 100 *34,250	*15 100 *34,250	*24 300 *52,800	18 650 40,100	*18 800 *40,700	12 150 26,200	14 800 31,850	8950 19,300			11 650 *25,700	7200 15,850	8880 29'1"
-3000 mm -10'0"	kg lb	*26 500 *57,900	*26 500 *57,900	*21 650 *46,900	18 900 40,600	*17 100 *36,900	12 250 26,400	*13 350 *28,600	9050 19,500			*11 900 *26,150	8250 18,250	8080 26'4"
-4500 mm -15'0"	kg lb			*17 300 *37,150	*17 300 *37,150	*13 650 *28,950	12 600 27,150					*11 250 *24,650	10 550 23,600	6850 22'2"



ISO 10567:2007



\* Indicates that the load is limited by hydraulic lifting capacity rather than tipping load. The above loads are in compliance with hydraulic excavator lift capacity standard ISO 10567:2007. They do not exceed 87% of hydraulic lifting capacity or 75% of tipping load. Weight of all lifting accessories must be deducted from the above lifting capacities. Lifting capacities are based on the machine standing on a firm, uniform supporting surface. The use of a work tool attachment point to handle/lift objects, could affect the machine lift performance.

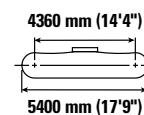
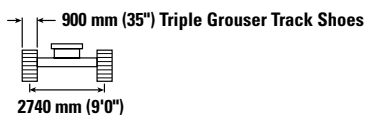
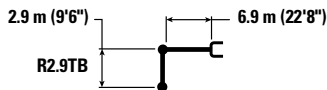
Lift capacity stays with ±5% for all available track shoes.

Always refer to the appropriate Operation and Maintenance Manual for specific product information.

# 350 Hydraulic Excavator Specifications

## Reach Boom Lift Capacities – Counterweight: 9.0 mt (19,842 lb) – without Bucket, Heavy Lift: On

Long Undercarriage



		3000 mm/10'0"		4500 mm/15'0"		6000 mm/20'0"		7500 mm/25'0"		9000 mm/30'0"		mm ft/in		
9000 mm 30'0"	kg lb											*10 750 *23,900	*10 750 *23,900	6730 21'6"
7500 mm 25'0"	kg lb							*11 750 *25,900	10 650 22,900			*10 050 *22,200	9550 21,450	8000 25'11"
6000 mm 20'0"	kg lb					*13 700 *29,650	*13 700 *29,650	*12 150 *26,500	10 500 22,550			*9850 *21,700	8050 17,850	8830 28'9"
4500 mm 15'0"	kg lb			*20 750 *44,400	*20 750 *44,400	*15 550 *33,600	14 100 30,450	*13 050 *28,300	10 150 21,850	*11 650 *25,450	7650 16,450	*10 000 *22,000	7200 15,900	9350 30'7"
3000 mm 10'0"	kg lb			*19 050 *49,700	*19 050 *42,900	*17 550 *37,900	13 350 28,750	*14 050 *30,500	9750 21,000	11 900 25,650	7450 16,050	*10 450 *22,950	6750 14,900	9600 31'5"
1500 mm 5'0"	kg lb			*13 650 *33,550	*13 650 *33,550	*18 950 *41,000	12 750 27,450	*14 900 *32,250	9400 20,250	11 700 25,200	7300 15,650	10 650 23,450	6650 14,600	9610 31'6"
0 mm 0'0"	kg lb			*19 500 *45,500	18 800 40,450	*19 400 *41,950	12 400 26,700	15 100 32,450	9150 19,700	11 600 24,950	7150 15,400	10 950 24,100	6800 14,900	9370 30'8"
-1500 mm -5'0"	kg lb	*15 100 *34,250	*15 100 *34,250	*24 300 *52,800	18 900 40,550	*18 800 *40,700	12 300 26,500	*14 850 *32,100	9050 19,550			11 800 26,000	7300 16,050	8880 29'1"
-3000 mm -10'0"	kg lb	*26 500 *57,900	*26 500 *57,900	*21 650 *46,900	19 100 41,050	*17 100 *36,900	12 400 26,750	*13 350 *28,600	9150 19,750			*11 900 *26,150	8350 18,450	8080 26'4"
-4500 mm -15'0"	kg lb			*17 300 *37,150	*17 300 *37,150	*13 650 *28,950	12 750 27,500					*11 250 *24,650	10 700 23,900	6850 22'2"



ISO 10567:2007



\* Indicates that the load is limited by hydraulic lifting capacity rather than tipping load. The above loads are in compliance with hydraulic excavator lift capacity standard ISO 10567:2007. They do not exceed 87% of hydraulic lifting capacity or 75% of tipping load. Weight of all lifting accessories must be deducted from the above lifting capacities. Lifting capacities are based on the machine standing on a firm, uniform supporting surface. The use of a work tool attachment point to handle/lift objects, could affect the machine lift performance.

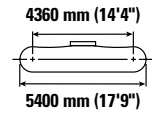
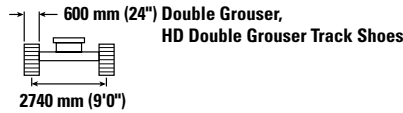
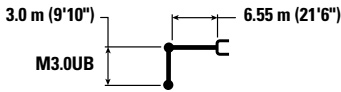
Lift capacity stays with ±5% for all available track shoes.

Always refer to the appropriate Operation and Maintenance Manual for specific product information.

# 350 Hydraulic Excavator Specifications

## Mass Boom Lift Capacities – Counterweight: 9.0 mt (19,842 lb) – without Bucket, Heavy Lift: On

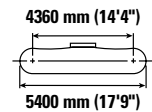
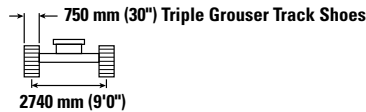
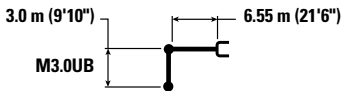
Long Undercarriage



Reach mm ft/in	Unit	3000 mm/10'0"		4500 mm/15'0"		6000 mm/20'0"		7500 mm/25'0"		9000 mm/30'0"		mm ft/in		
		kg lb	kg lb	kg lb	kg lb	kg lb	kg lb	kg lb	kg lb	kg lb	kg lb	kg lb	kg lb	
7500 mm 25'0"	kg lb							*11 600 26,000	10 200 21,600			*10 000 22,100	9750 21,950	7680 24'10"
6000 mm 20'0"	kg lb							*11 900 26,000	10 050 21,600			*9750 21,450	8000 17,850	8540 27'10"
4500 mm 15'0"	kg lb			*19 250 41,300	*19 250 41,300	*14 900 32,200	13 700 29,550	*12 650 27,550	9700 20,850	*10 800 7200		*9850 21,650	7100 15,650	9070 29'8"
3000 mm 10'0"	kg lb			*23 450 50,350	19 500 42,050	*16 850 36,350	12 850 27,700	*13 650 29,600	9250 19,950	11 350 24,350	7000 15,000	*10 300 22,600	6600 14,550	9330 30'7"
1500 mm 5'0"	kg lb			*22 900 55,050	18 300 39,400	*18 350 39,650	12 150 26,200	*14 450 31,350	8850 19,100	11 150 23,950	6800 14,600	10 500 23,150	6450 14,150	9340 30'7"
0 mm 0'0"	kg lb			*25 700 55,700	17 900 38,450	*18 900 40,950	11 750 25,300	14 400 30,950	8600 18,500	11 000 6650		10 800 23,800	6550 14,450	9100 29'10"
-1500 mm -5'0"	kg lb	*17 950 40,600	*17 950 40,600	*24 300 52,700	17 850 38,350	*18 400 39,900	11 600 24,950	14 250 30,700	8500 18,300			11 750 25,850	7100 15,600	8590 28'1"
-3000 mm -10'0"	kg lb	*27 700 60,250	*27 700 60,250	*21 550 46,650	18 050 38,800	*16 650 35,950	11 700 25,150	*12 700 26,950	8600 18,550			*11 950 26,300	8250 18,250	7760 25'4"
-4500 mm -15'0"	kg lb			*16 800 35,950	*16 800 35,950	*12 700 26,700	12 050 26,050					*11 250 24,550	10 900 24,500	6470 20'11"

## Mass Boom Lift Capacities – Counterweight: 9.0 mt (19,842 lb) – without Bucket, Heavy Lift: On

Long Undercarriage



Reach mm ft/in	Unit	3000 mm/10'0"		4500 mm/15'0"		6000 mm/20'0"		7500 mm/25'0"		9000 mm/30'0"		mm ft/in		
		kg lb	kg lb	kg lb	kg lb	kg lb	kg lb	kg lb	kg lb	kg lb	kg lb	kg lb	kg lb	
7500 mm 25'0"	kg lb							*11 600 26,000	10 350 21,900			*10 000 22,100	9900 22,100	7680 24'10"
6000 mm 20'0"	kg lb							*11 900 26,000	10 200 21,900			*9750 21,450	8150 18,100	8540 27'10"
4500 mm 15'0"	kg lb			*19 250 41,300	*19 250 41,300	*14 900 32,200	13 900 29,950	*12 650 27,550	9850 21,150	*10 800 7300		*9850 21,650	7200 15,900	9070 29'8"
3000 mm 10'0"	kg lb			*23 450 50,350	19 750 42,650	*16 850 36,350	13 050 28,100	*13 650 29,600	9400 20,250	11 550 24,800	7100 15,250	*10 300 22,600	6700 14,800	9330 30'7"
1500 mm 5'0"	kg lb			*22 900 55,050	18 550 40,000	*18 350 39,650	12 350 26,600	*14 450 31,350	9000 19,400	11 300 24,350	6900 14,850	10 700 23,550	6550 14,400	9340 30'7"
0 mm 0'0"	kg lb			*25 700 55,700	18 150 39,050	*18 900 40,950	11 950 25,700	14 650 31,450	8750 18,800	11 200 6800		11 000 24,200	6700 14,700	9100 29'10"
-1500 mm -5'0"	kg lb	*17 950 40,600	*17 950 40,600	*24 300 52,700	18 150 38,950	*18 400 39,900	11 800 25,350	*14 400 31,100	8650 18,600			11 950 26,300	7200 15,900	8590 28'1"
-3000 mm -10'0"	kg lb	*27 700 60,250	*27 700 60,250	*21 550 46,650	18 350 39,450	*16 650 35,950	11 850 25,550	*12 700 26,950	8750 18,850			*11 950 26,300	8400 18,550	7760 25'4"
-4500 mm -15'0"	kg lb			*16 800 35,950	*16 800 35,950	*12 700 26,700	12 250 26,500					*11 250 24,550	11 100 24,550	6470 20'11"



ISO 10567:2007



\* Indicates that the load is limited by hydraulic lifting capacity rather than tipping load. The above loads are in compliance with hydraulic excavator lift capacity standard ISO 10567:2007. They do not exceed 87% of hydraulic lifting capacity or 75% of tipping load. Weight of all lifting accessories must be deducted from the above lifting capacities. Lifting capacities are based on the machine standing on a firm, uniform supporting surface. The use of a work tool attachment point to handle/lift objects, could affect the machine lift performance.

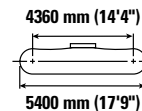
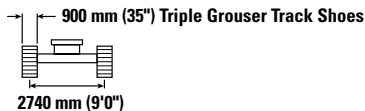
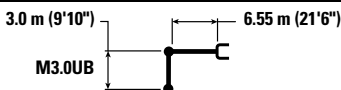
Lift capacity stays with ±5% for all available track shoes.

Always refer to the appropriate Operation and Maintenance Manual for specific product information.

# 350 Hydraulic Excavator Specifications

## Mass Boom Lift Capacities – Counterweight: 9.0 mt (19,842 lb) – without Bucket, Heavy Lift: On

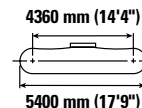
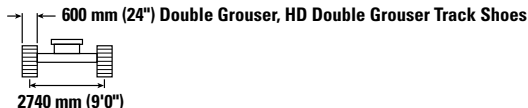
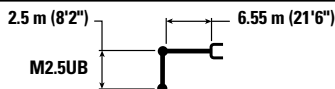
Long Undercarriage



Boom Length	Unit	3000 mm/10'0"		4500 mm/15'0"		6000 mm/20'0"		7500 mm/25'0"		9000 mm/30'0"		mm ft/in		
		ISO	ISO	ISO	ISO	ISO	ISO	ISO	ISO	ISO	ISO			
7500 mm 25'0"	kg lb							*11 600 26,000	10 450 22,150			*10 000 22,100	*10 000 22,100	7680 24'10"
6000 mm 20'0"	kg lb							*11 900 26,000	10 300 22,150			*9750 21,450	8250 18,300	8540 27'10"
4500 mm 15'0"	kg lb			*19 250 41,300	*19 250 41,300	*14 900 32,200	14 050 30,250	*12 650 27,550	9950 21,400	*10 800 7400		*9850 21,650	7300 16,100	9070 29'8"
3000 mm 10'0"	kg lb			*23 450 50,350	20 000 43,150	*16 850 36,350	13 200 28,450	*13 650 29,600	9500 20,500	11 700 25,100	7200 15,450	*10 300 22,600	6800 14,950	9330 30'7"
1500 mm 5'0"	kg lb			*22 900 55,050	18 800 40,500	*18 350 39,650	12 500 26,950	*14 450 31,350	9150 19,650	11 450 24,650	7000 15,050	*10 850 23,850	6650 14,600	9340 30'7"
0 mm 0'0"	kg lb			*25 700 55,700	18 400 39,550	*18 900 40,950	12 100 26,000	*14 800 31,900	8850 19,050	11 300 6850		*11 150 24,550	6750 14,900	9100 29'10"
-1500 mm -5'0"	kg lb	*17 950 40,600	*17 950 40,600	*24 300 52,700	18 350 39,450	*18 400 39,900	11 950 25,700	*14 400 31,100	8750 18,850			*12 000 26,400	7300 16,100	8590 28'1"
-3000 mm -10'0"	kg lb	*27 700 60,250	*27 700 60,250	*21 550 46,650	18 550 39,900	*16 650 35,950	12 000 25,900	*12 700 26,950	8850 19,100			*11 950 26,300	8500 18,800	7760 25'4"
-4500 mm -15'0"	kg lb			*16 800 35,950	*16 800 35,950	*12 700 26,700	12 400 26,700					*11 250 24,550	11 200 24,550	6470 20'11"

## Mass Boom Lift Capacities – Counterweight: 9.0 mt (19,842 lb) – without Bucket, Heavy Lift: On

Long Undercarriage



Boom Length	Unit	3000 mm/10'0"		4500 mm/15'0"		6000 mm/20'0"		7500 mm/25'0"		9000 mm/30'0"		mm ft/in
		ISO	ISO	ISO	ISO	ISO	ISO	ISO	ISO	ISO	ISO	
7500 mm 25'0"	kg lb									*12 850 28,400	11 000 24,800	7110 23'0"
6000 mm 20'0"	kg lb					*14 100 30,650	*14 100 30,650	*12 700 27,750	9950 21,350	*12 450 27,450	8850 19,650	8040 26'2"
4500 mm 15'0"	kg lb			*20 900 44,800	20 900 44,800	*15 800 34,100	13 550 29,200	*13 300 28,950	9650 20,750	*12 350 27,150	7750 17,100	8600 28'1"
3000 mm 10'0"	kg lb			*53,500	41,150	*17 600 38,000	12 750 27,500	*14 150 30,750	9250 19,900	11 600 25,600	7150 15,800	8880 29'1"
1500 mm 5'0"	kg lb					*18 800 40,700	12 150 26,150	*14 700 31,650	8900 19,150	11 400 25,100	7000 15,400	8890 29'1"
0 mm 0'0"	kg lb			*24 050 54,950	18 000 38,700	*19 050 41,250	11 800 25,450	*14 450 31,150	8700 18,700	11 800 25,950	7200 15,800	8640 28'3"
-1500 mm -5'0"	kg lb	*18 150 41,350	*18 150 41,350	*23 400 50,850	18 100 38,850	*18 150 39,300	11 750 25,300	*14 200 30,550	8650 18,650	*12 700 27,950	7850 17,300	8100 26'6"
-3000 mm -10'0"	kg lb	*24 250 52,800	*24 250 52,800	*20 200 43,700	18 400 39,500	*15 850 34,100	11 900 25,650			*12 450 27,350	9350 20,700	7200 23'5"
-4500 mm -15'0"	kg lb			*14 550 30,850	*14 550 30,850					*11 050 24,050	*11 050 24,050	5790 18'8"



ISO 10567:2007



\* Indicates that the load is limited by hydraulic lifting capacity rather than tipping load. The above loads are in compliance with hydraulic excavator lift capacity standard ISO 10567:2007. They do not exceed 87% of hydraulic lifting capacity or 75% of tipping load. Weight of all lifting accessories must be deducted from the above lifting capacities. Lifting capacities are based on the machine standing on a firm, uniform supporting surface. The use of a work tool attachment point to handle/lift objects, could affect the machine lift performance.

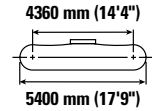
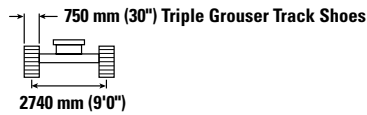
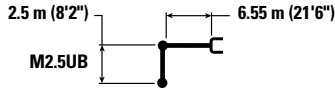
Lift capacity stays with ±5% for all available track shoes.

Always refer to the appropriate Operation and Maintenance Manual for specific product information.

# 350 Hydraulic Excavator Specifications

## Mass Boom Lift Capacities – Counterweight: 9.0 mt (19,842 lb) – without Bucket, Heavy Lift: On

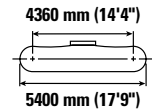
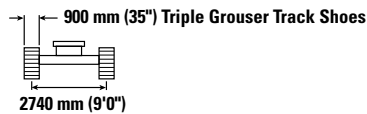
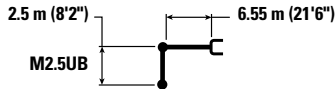
Long Undercarriage



Boom Length mm ft/in	Unit	3000 mm/10'0"		4500 mm/15'0"		6000 mm/20'0"		7500 mm/25'0"		mm ft/in		
7500 mm 25'0"	kg lb									*12 850 *28,400	11 150 25,150	7110 23'0"
6000 mm 20'0"	kg lb					*14 100 *30,650	*14 100 *30,650	*12 700 *27,750	10 100 21,650	*12 450 *27,450	8950 19,950	8040 26'2"
4500 mm 15'0"	kg lb			*20 900 *44,800	*20 900 *44,800	*15 800 *34,100	13 750 29,600	*13 300 *28,950	9800 21,050	*12 350 *27,150	7850 17,350	8600 28'1"
3000 mm 10'0"	kg lb			*53,500	41,750	*17 600 *38,000	12 950 27,900	*14 150 *30,750	9400 20,200	11 800 26,000	7300 16,050	8880 29'1"
1500 mm 5'0"	kg lb					*18 800 *40,700	12 300 26,550	*14 850 *32,100	9050 19,500	11 600 25,550	7100 15,650	8890 29'1"
0 mm 0'0"	kg lb			*24 050 *54,950	18 300 39,350	*19 050 *41,250	12 000 25,850	14 700 31,650	8850 19,000	12 000 26,400	7300 16,050	8640 28'3"
-1500 mm -5'0"	kg lb	*18 150 *41,350	*18 150 *41,350	*23 400 *50,850	18 400 39,500	*18 150 *39,300	11 950 25,700	*14 200 *30,550	8800 18,950	*12 700 *27,950	7950 17,550	8100 26'6"
-3000 mm -10'0"	kg lb	*24 250 *52,800	*24 250 *52,800	*20 200 *43,700	18 650 40,150	*15 850 *34,100	12 100 26,100			*12 450 *27,350	9500 21,050	7200 23'5"
-4500 mm -15'0"	kg lb			*14 550 *30,850	*14 550 *30,850					*11 050 *24,050	*11 050 *24,050	5790 18'8"

## Mass Boom Lift Capacities – Counterweight: 9.0 mt (19,842 lb) – without Bucket, Heavy Lift: On

Long Undercarriage



Boom Length mm ft/in	Unit	3000 mm/10'0"		4500 mm/15'0"		6000 mm/20'0"		7500 mm/25'0"		mm ft/in		
7500 mm 25'0"	kg lb									*12 850 *28,400	11 300 25,400	7110 23'0"
6000 mm 20'0"	kg lb					*14 100 *30,650	*14 100 *30,650	*12 700 *27,750	10 200 21,900	*12 450 *27,450	9050 20,200	8040 26'2"
4500 mm 15'0"	kg lb			*20 900 *44,800	*20 900 *44,800	*15 800 *34,100	13 900 29,950	*13 300 *28,950	9900 21,300	*12 350 *27,150	7950 17,550	8600 28'1"
3000 mm 10'0"	kg lb			*53,500	42,250	*17 600 *38,000	13 100 28,200	*14 150 *30,750	9500 20,450	11 950 26,350	7400 16,250	8880 29'1"
1500 mm 5'0"	kg lb					*18 800 *40,700	12 450 26,900	*14 850 *32,100	9150 19,750	11 750 25,900	7200 15,850	8890 29'1"
0 mm 0'0"	kg lb			*24 050 *54,950	18 550 39,850	*19 050 *41,250	12 150 26,200	14 900 32,050	8950 19,250	12 150 26,750	7400 16,300	8640 28'3"
-1500 mm -5'0"	kg lb	*18 150 *41,350	*18 150 *41,350	*23 400 *50,850	18 600 40,000	*18 150 *39,300	12 100 26,050	*14 200 *30,550	8900 19,200	*12 700 *27,950	8050 17,800	8100 26'6"
-3000 mm -10'0"	kg lb	*24 250 *52,800	*24 250 *52,800	*20 200 *43,700	18 900 40,600	*15 850 *34,100	12 250 26,400			*12 450 *27,350	9600 21,300	7200 23'5"
-4500 mm -15'0"	kg lb			*14 550 *30,850	*14 550 *30,850					*11 050 *24,050	*11 050 *24,050	5790 18'8"



ISO 10567:2007



\* Indicates that the load is limited by hydraulic lifting capacity rather than tipping load. The above loads are in compliance with hydraulic excavator lift capacity standard ISO 10567:2007. They do not exceed 87% of hydraulic lifting capacity or 75% of tipping load. Weight of all lifting accessories must be deducted from the above lifting capacities. Lifting capacities are based on the machine standing on a firm, uniform supporting surface. The use of a work tool attachment point to handle/lift objects, could affect the machine lift performance.

Lift capacity stays with ±5% for all available track shoes.

Always refer to the appropriate Operation and Maintenance Manual for specific product information.

# 350 Hydraulic Excavator Specifications

## Typical Pass Match Guide

For maximum production and efficiency, we recommend that loading and hauling machines are matched to achieve optimal performance.

### Configuration:\*

Reach boom, R2.9TB (9'6") stick, General Duty (GDC) 3.08 m<sup>3</sup> (4.03 yd<sup>3</sup>) bucket, and 600 mm (24") double grouser shoes, Long Undercarriage.

#### Passes Required to Fill Trucks to Rated Capacity

Material Type	Material Density	Cat Articulated Trucks							Cat Off-Highway Trucks					
		725	730 EJ	730	735	740 GC	740 EJ	745	770G	772G	773E	773G	775G	777G
Earth	1600 kg/m <sup>3</sup> (2,700 lb/yd <sup>3</sup> )	5	5-6	5-6	6-7	8	7	8	8	9-10	11	11	13	18
Limestone	1540 kg/m <sup>3</sup> (2,600 lb/yd <sup>3</sup> )	5-6	6-7	6-7	7-8	9	8-9	10	9	11	13	13	15	

\* The indicated pass match reflects the machine configuration, fill factor, and typical material density shown. Changes to machine configurations, fill factors, or material density as well as jobsite-specific factors may influence exact pass match recommendations for your application. Consult your Cat dealer for more information.

### Configuration:\*

Reach boom, R3.35TB (11'0") stick, GDC 3.08 m<sup>3</sup> (4.03 yd<sup>3</sup>) bucket, and 750 mm (30") triple grouser shoes, Long Undercarriage.

#### Passes Required to Fill Trucks to Rated Capacity

Material Type	Material Density	Cat Articulated Trucks							Cat Off-Highway Trucks					
		725	730 EJ	730	735	740 GC	740 EJ	745	770G	772G	773E	773G	775G	777G
Earth	1600 kg/m <sup>3</sup> (2,700 lb/yd <sup>3</sup> )	5	5-6	5-6	6-7	8	7	8	8	9-10	11	11	13	18
Limestone	1540 kg/m <sup>3</sup> (2,600 lb/yd <sup>3</sup> )	5-6	6-7	6-7	7-8	9	8-9	10	9	11	13	13	15	

\* The indicated pass match reflects the machine configuration, fill factor, and typical material density shown. Changes to machine configurations, fill factors, or material density as well as jobsite-specific factors may influence exact pass match recommendations for your application. Consult your Cat dealer for more information.

### Configuration:\*

Reach boom, R3.9TB (12'10") stick, GDC 3.08 m<sup>3</sup> (4.03 yd<sup>3</sup>) bucket, and 900 mm (35") triple grouser shoes, Long Undercarriage.

#### Passes Required to Fill Trucks to Rated Capacity

Material Type	Material Density	Cat Articulated Trucks							Cat Off-Highway Trucks					
		725	730 EJ	730	735	740 GC	740 EJ	745	770G	772G	773E	773G	775G	777G
Earth	1600 kg/m <sup>3</sup> (2,700 lb/yd <sup>3</sup> )	5	5-6	5-6	6-7	8	7	8	8	9-10	11	11	13	18
Limestone	1540 kg/m <sup>3</sup> (2,600 lb/yd <sup>3</sup> )	5-6	6-7	6-7	7-8	9	8-9	10	9	11	13	13	15	

\* The indicated pass match reflects the machine configuration, fill factor, and typical material density shown. Changes to machine configurations, fill factors, or material density as well as jobsite-specific factors may influence exact pass match recommendations for your application. Consult your Cat dealer for more information.

# 350 Hydraulic Excavator Specifications

## Bucket Specifications and Compatibility – Australia and New Zealand

	Linkage	Width		Capacity		Weight		Fill	Long Fixed Gauge Undercarriage					
		mm	in	m <sup>3</sup>	yd <sup>3</sup>	kg	lb		%	9.0 mt (19,842 lb) Counterweight			6.55 m (21'6") Mass	
										6.9 m (22'8") Reach			6.55 m (21'6") Mass	
									R2.9 (9'6")	R3.35 (11'0")	R3.9 (12'10")	M2.5 (8'2")	M3.0 (9'10")	
<b>Pin-On (No Quick Coupler)</b>														
Heavy Duty	TB	1650	66	2.41	3.16	2274	5,013	100	⊙	⊖	⊖			
	TB	1850	72	2.69	3.52	2403	5,298	100	⊖	⊖	○			
Severe Duty	TB	1650	66	2.41	3.15	2367	5,218	90	●	⊙	⊖			
Heavy Duty	UB	1950	77	3.43	4.48	2912	6,419	100				○	◇	
Maximum load with pin-on (payload + bucket)								kg	6892	6394	5808	7508	6786	
								lb	15,194	14,096	12,804	16,552	14,961	
<b>With Cat Pin Grabber Coupler</b>														
Heavy Duty	TB	1650	66	2.41	3.16	2274	5,013	100	⊖	○	◇			
	TB	1850	72	2.69	3.52	2403	5,298	100	○	◇	◇			
Severe Duty	TB	1650	66	2.41	3.15	2367	5,218	90	⊖	○	◇			
Maximum load with coupler (payload + bucket)								kg	5839	5341	4755	6455	5733	
								lb	12,872	11,774	10,483	14,230	12,639	
<b>With CW Quick Coupler</b>														
Heavy Duty	TB	1650	66	2.41	3.16	2274	5,013	100	⊖	○	○			
	TB	1850	72	2.69	3.52	2403	5,298	100	○	○	◇			
Severe Duty	TB	1650	66	2.41	3.15	2367	5,218	90	⊙	⊖	○			
Heavy Duty	UB	1950	77	3.43	4.48	2912	6,419	100				◇	◇	
Maximum load with coupler (payload + bucket)								kg	6137	5639	5053	6689	5967	
								lb	13,530	12,432	11,140	14,747	13,155	

The above loads are in compliance with hydraulic excavator standard EN 474-5:2022/AC:2022, they do not exceed 87% of hydraulic lifting capacity or 75% of tipping capacity with front linkage fully extended at ground line with bucket curled.

Capacity based on ISO 7451:2007.

### Maximum Material Density:

- 2100 kg/m<sup>3</sup> (3,500 lb/yd<sup>3</sup>)
- ⊙ 1800 kg/m<sup>3</sup> (3,000 lb/yd<sup>3</sup>)
- ⊖ 1500 kg/m<sup>3</sup> (2,500 lb/yd<sup>3</sup>)
- 1200 kg/m<sup>3</sup> (2,000 lb/yd<sup>3</sup>)
- ◇ 900 kg/m<sup>3</sup> (1,500 lb/yd<sup>3</sup>)

Caterpillar recommends using appropriate work tools to maximize the value customers receive from our products. Use of work tools, including buckets, which are outside of Caterpillar's recommendations or specifications for weight, dimensions, flows, pressures, etc. may result in less-than-optimal performance, including but not limited to reductions in production, stability, reliability, and component durability. Improper use of a work tool resulting in sweeping, prying, twisting and/or catching of heavy loads will reduce the life of the boom and stick.

# 350 Hydraulic Excavator Specifications

## Bucket Specifications and Compatibility – Europe

	Linkage	Width		Capacity		Weight		Fill	Long Fixed Gauge Undercarriage					
									9.0 mt (19,842 lb) Counterweight				6.9 m (22'8") Reach	
		mm	in	m <sup>3</sup>	yd <sup>3</sup>	kg	lb	%	R2.9 (9'6")	R3.35 (11'0")	M2.5 (8'2")	M3.0 (9'10")		
		<b>Pin-On (No Quick Coupler)</b>												
Severe Duty	TB	1550	61	2.14	2.80	2329	5,134	90	●	●				
Heavy Duty	UB	1650	65	2.77	3.62	2573	5,672	100			⊙	⊖		
	UB	1750	69	3.00	3.92	2845	6,271	100			⊖	○		
Maximum load with pin-on (payload + bucket)								kg	6892	6394	7508	6786		
								lb	15,194	14,096	16,552	14,961		
<b>With CW Quick Coupler</b>														
Severe Duty	TB	1550	61	2.14	2.80	2329	5,134	100	⊙	⊖				
Heavy Duty	UB	1650	65	2.77	3.62	2573	5,672	100			⊖	○		
	UB	1750	69	3.00	3.92	2845	6,271	90			○	○		
Maximum load with coupler (payload + bucket)								kg	6137	5639	6689	5967		
								lb	13,530	12,432	14,747	13,155		

The above loads are in compliance with hydraulic excavator standard EN 474-5:2022/AC:2022, they do not exceed 87% of hydraulic lifting capacity or 75% of tipping capacity with front linkage fully extended at ground line with bucket curled.  
Capacity based on ISO 7451:2007.

### Maximum Material Density:

- 2100 kg/m<sup>3</sup> (3,500 lb/yd<sup>3</sup>)
- ⊙ 1800 kg/m<sup>3</sup> (3,000 lb/yd<sup>3</sup>)
- ⊖ 1500 kg/m<sup>3</sup> (2,500 lb/yd<sup>3</sup>)
- 1200 kg/m<sup>3</sup> (2,000 lb/yd<sup>3</sup>)

Caterpillar recommends using appropriate work tools to maximize the value customers receive from our products. Use of work tools, including buckets, which are outside of Caterpillar's recommendations or specifications for weight, dimensions, flows, pressures, etc. may result in less-than-optimal performance, including but not limited to reductions in production, stability, reliability, and component durability. Improper use of a work tool resulting in sweeping, prying, twisting and/or catching of heavy loads will reduce the life of the boom and stick.

# 350 Hydraulic Excavator Specifications

## Bucket Specifications and Compatibility – Türkiye

	Linkage	Width		Capacity		Weight		Fill	Long Fixed Gauge Undercarriage					
		9.0 mt (19,842 lb) Counterweight							6.9 m (22'8") Reach				6.55 m (21'6") Mass	
		mm	in	m <sup>3</sup>	yd <sup>3</sup>	kg	lb		%	R2.9 (9'6")	R3.35 (11'0")	R3.9 (12'10")	R3.35 (11'0") HD	M2.5 (8'2")
<b>Pin-On (No Quick Coupler)</b>														
Heavy Duty	TB	1650	65	2.41	3.15	2221	4,896	100	☉	☉	☉	☉		
	TB	1900	74	2.78	3.64	2429	5,355	100	☉	○	○	○		
Severe Duty	TB	1550	61	2.14	2.80	2329	5,134	90	●	●	☉	●		
Heavy Duty	UB	1750	69	3.00	3.92	2845	6,271	100					☉	○
	UB	1950	77	3.43	4.49	2911	6,417	100					○	◇
Severe Duty	UB	1650	65	2.77	3.62	2737	6,033	90					☉	☉
	UB	1850	73	3.21	4.20	2951	6,505	90					☉	○
Maximum load with pin-on (payload + bucket)								kg	6858	6386	5860	6182	7476	6717
								lb	15,119	14,079	12,919	13,629	16,482	14,808
<b>With Cat Pin Grabber Coupler</b>														
Heavy Duty	TB	1650	65	2.41	3.15	2221	4,896	100	☉	○	◇	○		
	TB	1900	74	2.78	3.64	2429	5,355	100	○	◇	X	◇		
Severe Duty	TB	1550	61	2.14	2.80	2329	5,134	90	☉	☉	○	☉		
Heavy Duty	UB	1950	77	3.43	4.49	2911	6,417	100						
Severe Duty	UB	1650	65	2.77	3.62	2737	6,033	90						
	UB	1850	73	3.21	4.20	2951	6,505	90						
Maximum load with coupler (payload + bucket)								kg	5805	5333	4807	5129	–	–
								lb	12,797	11,757	10,597	11,307	–	–
<b>With CW Quick Coupler</b>														
Heavy Duty	TB	1650	65	2.41	3.15	2221	4,896	100	☉	○	○	○		
	TB	1900	74	2.78	3.64	2429	5,355	100	○	○	◇	◇		
Severe Duty	TB	1550	61	2.14	2.80	2329	5,134	90	☉	☉	☉	☉		
Heavy Duty	UB	1750	69	3.00	3.92	2845	6,271	90					○	○
	UB	1950	77	3.43	4.49	2911	6,417	100					◇	◇
Severe Duty	UB	1650	65	2.77	3.62	2737	6,033	90					☉	○
	UB	1850	73	3.21	4.20	2951	6,505	90					○	◇
Maximum load with coupler (payload + bucket)								kg	6103	5631	5105	5427	6657	5898
								lb	13,455	12,414	11,255	11,964	14,676	13,003

The above loads are in compliance with hydraulic excavator standard EN 474-5:2022/AC:2022, they do not exceed 87% of hydraulic lifting capacity or 75% of tipping capacity with front linkage fully extended at ground line with bucket curled.

Capacity based on ISO 7451:2007.

### Maximum Material Density:

- 2100 kg/m<sup>3</sup> (3,500 lb/yd<sup>3</sup>)
- ☉ 1800 kg/m<sup>3</sup> (3,000 lb/yd<sup>3</sup>)
- ☉ 1500 kg/m<sup>3</sup> (2,500 lb/yd<sup>3</sup>)
- 1200 kg/m<sup>3</sup> (2,000 lb/yd<sup>3</sup>)
- ◇ 900 kg/m<sup>3</sup> (1,500 lb/yd<sup>3</sup>)
- X Not Recommended

Caterpillar recommends using appropriate work tools to maximize the value customers receive from our products. Use of work tools, including buckets, which are outside of Caterpillar's recommendations or specifications for weight, dimensions, flows, pressures, etc. may result in less-than-optimal performance, including but not limited to reductions in production, stability, reliability, and component durability. Improper use of a work tool resulting in sweeping, prying, twisting and/or catching of heavy loads will reduce the life of the boom and stick.

# 350 Hydraulic Excavator Specifications

## Bucket Specifications and Compatibility – North America

	Linkage	Width		Capacity		Weight		Fill	Long Fixed Gauge Undercarriage				
		9.0 mt (19,842 lb) Counterweight							6.9 m (22'8") Reach		6.55 m (21'6") Mass		
		mm	in	m <sup>3</sup>	yd <sup>3</sup>	kg	lb		%	R3.35 (11'0")	R3.9 (12'10")	M2.5 (8'2")	M3.0 (9'10")
<b>Pin-On (No Quick Coupler)</b>													
General Duty	TB	1850	74	3.08	4.04	2356	5,194	100	○	○			
	TB	2000	79	3.60	4.71	2504	5,520	100	◇	◇			
Heavy Duty	TB	1350	54	1.87	2.44	1979	4,363	100	●	●			
	TB	1800	72	2.69	3.52	2437	5,373	100	⊖	○			
Severe Duty	TB	1550	61	2.14	2.80	2369	5,222	90	●	⊙			
	TB	1900	75	3.09	4.05	2866	6,318	90	○	◇			
Heavy Duty	UB	1850	73	3.21	4.20	2758	6,079	100			⊖	○	
	UB	1950	77	3.43	4.48	2912	6,419	100			○	○	
Severe Duty	UB	1850	73	3.21	4.20	2972	6,552	90			⊖	○	
	UB	1600	63	2.66	3.48	3217	7,091	90			⊙	⊖	
Maximum load with pin-on (payload + bucket)								kg	6606	6005	7756	7017	
								lb	14,564	13,239	17,099	15,470	
<b>With Cat Pin Grabber Coupler</b>													
General Duty	TB	1850	74	3.08	4.04	2356	5,194	100	◇	X			
	TB	2000	79	3.60	4.71	2504	5,520	100	X	X			
Heavy Duty	TB	1350	54	1.87	2.44	1979	4,363	100	⊙	⊖			
	TB	1800	72	2.69	3.52	2437	5,373	100	○	◇			
Severe Duty	TB	1550	61	2.14	2.80	2369	5,222	90	⊖	○			
	TB	1900	75	3.09	4.05	2866	6,318	90	◇	X			
Maximum load with coupler (payload + bucket)								kg	5553	4952	–	–	
								lb	12,242	10,917	–	–	

The above loads are in compliance with hydraulic excavator standard EN 474-5:2022/AC:2022, they do not exceed 87% of hydraulic lifting capacity or 75% of tipping capacity with front linkage fully extended at ground line with bucket curled.

Capacity based on ISO 7451:2007.

### Maximum Material Density:

- 2100 kg/m<sup>3</sup> (3,500 lb/yd<sup>3</sup>)
- ⊙ 1800 kg/m<sup>3</sup> (3,000 lb/yd<sup>3</sup>)
- ⊖ 1500 kg/m<sup>3</sup> (2,500 lb/yd<sup>3</sup>)
- 1200 kg/m<sup>3</sup> (2,000 lb/yd<sup>3</sup>)
- ◇ 900 kg/m<sup>3</sup> (1,500 lb/yd<sup>3</sup>)
- X Not Recommended

Caterpillar recommends using appropriate work tools to maximize the value customers receive from our products. Use of work tools, including buckets, which are outside of Caterpillar's recommendations or specifications for weight, dimensions, flows, pressures, etc. may result in less-than-optimal performance, including but not limited to reductions in production, stability, reliability, and component durability. Improper use of a work tool resulting in sweeping, prying, twisting and/or catching of heavy loads will reduce the life of the boom and stick.

# 350 Hydraulic Excavator Specifications

## Bucket Specifications and Compatibility – Chile and Columbia

	Linkage	Width		Capacity		Weight		Fill	Long Fixed Gauge Undercarriage		
		mm	in	m <sup>3</sup>	yd <sup>3</sup>	kg	lb		%	9.0 mt (19,842 lb) Counterweight	
										6.55 m (21'6") Mass	
										M2.5 (8'2")	M3.0 (9'10")
<b>Pin-On (No Quick Coupler)</b>											
Severe Duty	UB	1600	63	2.61	3.41	3105	6,844	90	⊙	⊖	
	UB	1700	67	2.77	3.62	3222	7,102	90	⊖	○	
	UB	1650	65	2.77	3.62	2737	6,033	90	⊙	⊖	
	UB	1850	73	3.21	4.20	2951	6,505	90	⊖	○	
Maximum load with pin-on (payload + bucket)								kg	7476	6717	
								lb	16,482	14,808	
<b>With Cat Pin Grabber Coupler</b>											
Severe Duty	UB	1600	63	2.61	3.41	3105	6,844	90	⊖	○	
	UB	1700	67	2.77	3.62	3222	7,102	90	○	◇	
	UB	1650	65	2.77	3.62	2737	6,033	90	⊖	○	
	UB	1850	73	3.21	4.20	2951	6,505	90	○	◇	
Maximum load with coupler (payload + bucket)								kg	6657	5898	
								lb	14,676	13,003	

The above loads are in compliance with hydraulic excavator standard EN 474-5:2022/AC:2022, they do not exceed 87% of hydraulic lifting capacity or 75% of tipping capacity with front linkage fully extended at ground line with bucket curled.

Capacity based on ISO 7451:2007.

### Maximum Material Density:

- ⊙ 1800 kg/m<sup>3</sup> (3,000 lb/yd<sup>3</sup>)
- ⊖ 1500 kg/m<sup>3</sup> (2,500 lb/yd<sup>3</sup>)
- 1200 kg/m<sup>3</sup> (2,000 lb/yd<sup>3</sup>)
- ◇ 900 kg/m<sup>3</sup> (1,500 lb/yd<sup>3</sup>)

Caterpillar recommends using appropriate work tools to maximize the value customers receive from our products. Use of work tools, including buckets, which are outside of Caterpillar's recommendations or specifications for weight, dimensions, flows, pressures, etc. may result in less-than-optimal performance, including but not limited to reductions in production, stability, reliability, and component durability. Improper use of a work tool resulting in sweeping, prying, twisting and/or catching of heavy loads will reduce the life of the boom and stick.

# 350 Hydraulic Excavator Specifications

## Attachments Offering Guide – Australia and New Zealand

Not all Attachments are available in all regions. Consult your Cat dealer for configurations available in your region.

Match     
  \* Working range front only     
  † Allowed usage on machine less than 50%     
  No Match

### PIN-ON ATTACHMENTS

Undercarriage		Long Fixed Gauge Undercarriage				
Counterweight		9.0 mt (19,842 lb)				
Boom Type		Reach			Mass	
Stick Length		2.9 m (9'6")	3.35 m (11'0")	3.9 m (12'10")	2.5 m (8'2")	3.0 m (9'10")
Hydraulic Hammers	H160 S	✓	✓	✓	✓	✓
	H180 GC	✓	✓	✓	✓	✓
	H180 GC S	✓	✓	✓	✓	✓
	H180 S	✓	✓	✓	✓	✓
	H190 S	✓	✓	✓*	✓	✓
Demolition and Sorting Grapples	G345	✓	✓	✓	✓	✓
	G345 Flat Top	✓	✓	✓	✓	✓
Mobile Scrap and Demolition Shears	S3050 Flat Top	✓	✓*		✓	✓
Rotary Cutters	RC50	✓	✓	✓	✓	✓

### CAT PIN GRABBER COUPLER ATTACHMENTS

Undercarriage		Long Fixed Gauge Undercarriage				
Counterweight		9.0 mt (19,842 lb)				
Boom Type		Reach			Mass	
Stick Length		2.9 m (9'6")	3.35 m (11'0")	3.9 m (12'10")	2.5 m (8'2")	3.0 m (9'10")
Hydraulic Hammers	H160 S	✓	✓	✓	✓	✓
	H180 GC	✓	✓	✓*	✓	✓*
	H180 GC S	✓	✓	✓	✓	✓
	H180 S	✓†	✓†	✓*†	✓	✓
Demolition and Sorting Grapples	G345	✓	✓	✓	✓	✓
	G345 Flat Top	✓	✓	✓	✓	✓
Rotary Cutters	RC50	✓	✓	✓	✓	✓

### BOOM-MOUNT ATTACHMENTS

Undercarriage		Long Fixed Gauge Undercarriage		
Counterweight		9.0 mt (19,842 lb)		
Boom Type		Reach		
Mobile Scrap and Demolition Shears	S3070 Flat Top		✓	
	S3090 Flat Top		✓*	

# 350 Hydraulic Excavator Specifications

## Attachments Offering Guide – Europe

Not all Attachments are available in all regions. Consult your Cat dealer for configurations available in your region.

Match

\* Working range front only

No Match

### PIN-ON ATTACHMENTS

Undercarriage		Long Fixed Gauge Undercarriage			
Counterweight		9.0 mt (19,842 lb)			
Boom Type		Reach		Mass	
Stick Length		2.9 m (9'6")	3.35 m (11'0")	2.5 m (8'2")	3.0 m (9'10")
Hydraulic Hammers	H160 S	✓	✓	✓	✓
	H180 GC S	✓	✓	✓	✓
	H180 S	✓	✓	✓	✓
	H190 S	✓	✓	✓	✓
Multi-Processors	MP332 Concrete Cutter Jaw	✓	✓		
	MP332 Demolition Jaw	✓	✓		
	MP332 Pulverizer Jaw	✓	✓		
	MP332 Shear Jaw	✓	✓		
	MP332 Tank Shear Jaw	✓	✓		
	MP332 Universal Jaw	✓	✓		
	MP332 Concrete Cutter Jaw-Flat Top	✓	✓		
	MP332 Demolition Jaw-Flat Top	✓	✓		
	MP332 Pulverizer Jaw-Flat Top	✓	✓		
	MP332 Shear Jaw-Flat Top	✓	✓		
	MP332 Tank Shear Jaw-Flat Top	✓	✓		
	MP332 Universal Jaw-Flat Top	✓	✓		
	MP345 Concrete Cutter Jaw	✓	✓	✓	✓
	MP345 Demolition Jaw	✓	✓	✓	✓
	MP345 Pulverizer Jaw	✓	✓	✓	✓
	MP345 Shear Jaw	✓	✓	✓	✓
	MP345 Concrete Cutter Jaw-Flat Top	✓	✓	✓	✓
	MP345 Demolition Jaw-Flat Top	✓	✓	✓	✓
	MP345 Pulverizer Jaw-Flat Top	✓	✓	✓	✓
	MP345 Shear Jaw-Flat Top	✓	✓	✓	✓
Demolition and Sorting Grapples	G345	✓	✓	✓	✓
	G345 Flat Top	✓	✓	✓	✓
Mobile Scrap and Demolition Shears	S3050 Flat Top	✓	✓*	✓	✓
Pulverizers	P232 Secondary Pulverizer	✓	✓		
	P245 Secondary Pulverizer	✓	✓*	✓	✓*
	P332 Primary Pulverizer	✓	✓		
	P332 Primary Pulverizer-Flat Top	✓	✓		
	P345 Primary Pulverizer	✓	✓	✓	✓
	P345 Primary Pulverizer-Flat Top	✓	✓*	✓	✓
Rotary Cutters	RC50	✓	✓	✓	✓

(continued on next page)

# 350 Hydraulic Excavator Specifications

## Attachments Offering Guide – Europe (continued)

Not all Attachments are available in all regions. Consult your Cat dealer for configurations available in your region.

No Match

1800 kg/m<sup>3</sup> (3,000 lb/yd<sup>3</sup>)

1200 kg/m<sup>3</sup> (2,000 lb/yd<sup>3</sup>)

### PIN-ON ATTACHMENTS (continued)

Undercarriage		Long Fixed Gauge Undercarriage			
		9.0 mt (19,842 lb)			
Counterweight		Reach		Mass	
Boom Type		2.9 m (9'6")	3.35 m (11'0")	2.5 m (8'2")	3.0 m (9'10")
Stick Length		2.9 m (9'6")	3.35 m (11'0")	2.5 m (8'2")	3.0 m (9'10")
Orange Peel Grapples	GSH455-1000	●	●		
	GSH455-1500	●	●		
	GSH455-2000	●	○		
	GSH555-1000	●	●		
	GSH555-1500	●	●		
	GSM-50-1000	●	●		
	GSM-50-1250	●	●		
	GSM-50-1500	●	●		
	GSM-50-2000	○	○		
	GSM-60-1250	○	○	●	○
	GSM-60-1500	○		○	○
	GSM-60-2000			○	
Clamshell Grapples	CTV30-1700	●	●		
	CTV30-1900	●	●		
	CTV30-2300	○	○		
	CTV30-2700	○			
	CTV30-2900	○			

(continued on next page)

# 350 Hydraulic Excavator Specifications

## Attachments Offering Guide – Europe (continued)

Not all Attachments are available in all regions. Consult your Cat dealer for configurations available in your region.

Match     
  \* Working range front only     
  † Allowed usage on machine less than 50%     
  No Match

### CAT PIN GRABBER COUPLER ATTACHMENTS

Undercarriage		Long Fixed Gauge Undercarriage			
		9.0 mt (19,842 lb)			
Counterweight		Reach		Mass	
Boom Type		2.9 m (9'6")	3.35 m (11'0")	2.5 m (8'2")	3.0 m (9'10")
Stick Length		2.9 m (9'6")	3.35 m (11'0")	2.5 m (8'2")	3.0 m (9'10")
Hydraulic Hammers	H160 S	✓	✓	✓	✓
	H180 GC S	✓	✓	✓	✓
	H180 S	✓†	✓†	✓	✓
Multi-Processors	MP332 Concrete Cutter Jaw	✓	✓		
	MP332 Demolition Jaw	✓	✓		
	MP332 Pulverizer Jaw	✓	✓		
	MP332 Shear Jaw	✓	✓		
	MP332 Tank Shear Jaw	✓	✓		
	MP332 Universal Jaw	✓	✓		
	MP332 Concrete Cutter Jaw-Flat Top	✓	✓		
	MP332 Demolition Jaw-Flat Top	✓	✓		
	MP332 Pulverizer Jaw-Flat Top	✓	✓		
	MP332 Shear Jaw-Flat Top	✓	✓		
	MP332 Tank Shear Jaw-Flat Top	✓	✓		
	MP332 Universal Jaw-Flat Top	✓	✓		
	MP345 Concrete Cutter Jaw	✓	✓*	✓	
	MP345 Demolition Jaw	✓*		✓*	
	MP345 Pulverizer Jaw	✓*		✓*	
	MP345 Shear Jaw	✓	✓*	✓	
MP345 Concrete Cutter Jaw-Flat Top	✓*		✓*		
MP345 Shear Jaw-Flat Top	✓*		✓*		
Demolition and Sorting Grapples	G345	✓	✓	✓	✓
	G345 Flat Top	✓	✓	✓	✓
Pulverizers	P232 Secondary Pulverizer	✓	✓		
	P332 Primary Pulverizer	✓	✓		
	P332 Primary Pulverizer-Flat Top	✓	✓		
	P345 Primary Pulverizer			✓*	
Rotary Cutters	RC50	✓	✓	✓	✓

(continued on next page)

# 350 Hydraulic Excavator Specifications

## Attachments Offering Guide – Europe (continued)

Not all Attachments are available in all regions. Consult your Cat dealer for configurations available in your region.

Match

\* Working range front only

No Match

### CW-55 DEDICATED COUPLER ATTACHMENTS

Undercarriage		Long Fixed Gauge Undercarriage			
Counterweight		9.0 mt (19,842 lb)			
Boom Type		Reach		Mass	
Stick Length		2.9 m (9'6")	3.35 m (11'0")	2.5 m (8'2")	3.0 m (9'10")
Hydraulic Hammers	H160 S	✓	✓	✓	✓
	H180 GC S	✓	✓	✓	✓
	H180 S	✓	✓	✓	✓
	H190 S	✓*		✓	
Multi-Processors	MP332 Concrete Cutter Jaw	✓	✓		
	MP332 Demolition Jaw	✓	✓		
	MP332 Pulverizer Jaw	✓	✓		
	MP332 Shear Jaw	✓	✓		
	MP332 Tank Shear Jaw	✓	✓		
	MP332 Universal Jaw	✓	✓		
	MP332 Concrete Cutter Jaw-Flat Top	✓	✓		
	MP332 Demolition Jaw-Flat Top	✓	✓		
	MP332 Pulverizer Jaw-Flat Top	✓	✓		
	MP332 Shear Jaw-Flat Top	✓	✓		
	MP332 Tank Shear Jaw-Flat Top	✓	✓		
	MP332 Universal Jaw-Flat Top	✓	✓		
	MP345 Concrete Cutter Jaw	✓	✓*	✓	✓
	MP345 Demolition Jaw	✓*		✓	✓*
	MP345 Pulverizer Jaw	✓*		✓	✓*
	MP345 Shear Jaw	✓	✓*	✓	✓
	MP345 Concrete Cutter Jaw-Flat Top	✓*		✓	✓*
	MP345 Demolition Jaw-Flat Top			✓*	
	MP345 Pulverizer Jaw-Flat Top			✓*	
MP345 Shear Jaw-Flat Top	✓*		✓	✓*	
Demolition and Sorting Grapples	G345	✓	✓	✓	✓
	G345 Flat Top	✓	✓	✓	✓
Mobile Scrap and Demolition Shears	S3050 Flat Top			✓*	
Pulverizers	P232 Secondary Pulverizer	✓	✓		
	P332 Primary Pulverizer	✓	✓		
	P332 Primary Pulverizer-Flat Top	✓	✓		
	P345 Primary Pulverizer	✓*		✓	✓*
	P345 Primary Pulverizer-Flat Top			✓*	
Rotary Cutters	RC50	✓	✓	✓	✓

### BOOM-MOUNT ATTACHMENTS

Undercarriage		Long Fixed Gauge Undercarriage	
Counterweight		9.0 mt (19,842 lb)	
Boom Type		Reach	Mass
Mobile Scrap and Demolition Shears	S2090	✓	✓
	S3070 Flat Top	✓	
	S3090 Flat Top	✓*	

# 350 Hydraulic Excavator Specifications

## Attachments Offering Guide – Türkiye

Not all Attachments are available in all regions. Consult your Cat dealer for configurations available in your region.

Match
  \* Working range front only
  No Match
  1200 kg/m<sup>3</sup> (2,000 lb/yd<sup>3</sup>)

### PIN-ON ATTACHMENTS

Undercarriage		Long Fixed Gauge Undercarriage	
Counterweight		9.0 mt (19,842 lb)	
Boom Type		Reach	Mass
Stick Length		3.35 m (11'0")	3.00 m HD (9'10")
Hydraulic Hammers	H160 S	✓	✓
	H180 GC	✓	✓
	H180 GC Side Mount	✓	✓
	H180 GC S	✓	✓
	H180 S	✓	✓
	H190 S	✓	✓
Multi-Processors	MP332 Demolition Jaw	✓	
	MP332 Pulverizer Jaw	✓	
	MP332 Shear Jaw	✓	
	MP332 Tank Shear Jaw	✓	
	MP332 Universal Jaw	✓	
	MP332 Demolition Jaw-Flat Top	✓	
	MP332 Pulverizer Jaw-Flat Top	✓	
	MP332 Shear Jaw-Flat Top	✓	
	MP332 Tank Shear Jaw-Flat Top	✓	
	MP332 Universal Jaw-Flat Top	✓	
	MP345 Concrete Cutter Jaw	✓	✓
	MP345 Demolition Jaw	✓	✓
	MP345 Pulverizer Jaw	✓	✓
	MP345 Shear Jaw	✓	✓
	MP345 Concrete Cutter Jaw-Flat Top	✓	✓
	MP345 Demolition Jaw-Flat Top	✓	✓
	MP345 Pulverizer Jaw-Flat Top	✓*	✓
MP345 Shear Jaw-Flat Top	✓	✓	
Demolition and Sorting Grapples	G345	✓	✓
	G345 Flat Top	✓	✓
Mobile Scrap and Demolition Shears	S3050 Flat Top	✓*	✓
Pulverizers	P232 Secondary Pulverizer	✓	
	P245 Secondary Pulverizer	✓*	✓*
	P332 Primary Pulverizer	✓	
	P332 Primary Pulverizer-Flat Top	✓	
	P345 Primary Pulverizer	✓	✓
	P345 Primary Pulverizer-Flat Top	✓*	✓*
Orange Peel Grapples	GSM-60-1250		○
	GSM-60-1500		○

(continued on next page)

# 350 Hydraulic Excavator Specifications

## Attachments Offering Guide – Türkiye (continued)

Not all Attachments are available in all regions. Consult your Cat dealer for configurations available in your region.

Match
  \* Working range front only
  † Allowed usage on machine less than 50%
  No Match

### CAT PIN GRABBER COUPLER ATTACHMENTS

Undercarriage		Long Fixed Gauge Undercarriage	
Counterweight		9.0 mt (19,842 lb)	
Boom Type		Reach	Mass
Stick Length		3.35 m (11'0")	3.00 m HD (9'10")
Hydraulic Hammers	H160 S	✓	✓
	H180 GC	✓*	✓*
	H180 GC S	✓	✓
	H180 S	✓†	✓
Multi-Processors	MP332 Concrete Cutter Jaw	✓	
	MP332 Demolition Jaw	✓	
	MP332 Pulverizer Jaw	✓	
	MP332 Shear Jaw	✓	
	MP332 Tank Shear Jaw	✓	
	MP332 Universal Jaw	✓	
	MP332 Concrete Cutter Jaw-Flat Top	✓	
	MP332 Demolition Jaw-Flat Top	✓	
	MP332 Pulverizer Jaw-Flat Top	✓	
	MP332 Shear Jaw-Flat Top	✓	
	MP332 Tank Shear Jaw-Flat Top	✓*	
	MP332 Universal Jaw-Flat Top	✓	
	MP345 Concrete Cutter Jaw	✓	
	MP345 Demolition Jaw	✓	
Demolition and Sorting Grapples	G345	✓	✓
	G345 Flat Top	✓	✓
Pulverizers	P232 Secondary Pulverizer	✓	
	P332 Primary Pulverizer	✓	
	P332 Primary Pulverizer-Flat Top	✓	

(continued on next page)

# 350 Hydraulic Excavator Specifications

## Attachments Offering Guide – Türkiye (continued)

Not all Attachments are available in all regions. Consult your Cat dealer for configurations available in your region.

Match

\* Working range front only

No Match

### CW-55 DEDICATED COUPLER ATTACHMENTS

Undercarriage		Long Fixed Gauge Undercarriage	
Counterweight		9.0 mt (19,842 lb)	
Boom Type		Reach	Mass
Stick Length		3.35 m (11'0")	3.00 m HD (9'10")
Hydraulic Hammers	H160 S	✓	✓
	H180 GC	✓*	✓
	H180 GC S	✓	✓
	H180 S	✓	✓
	H190 S		
Multi-Processors	MP332 Concrete Cutter Jaw	✓	
	MP332 Demolition Jaw	✓	
	MP332 Pulverizer Jaw	✓	
	MP332 Shear Jaw	✓	
	MP332 Tank Shear Jaw	✓	
	MP332 Universal Jaw	✓	
	MP332 Concrete Cutter Jaw-Flat Top	✓	
	MP332 Demolition Jaw-Flat Top	✓	
	MP332 Pulverizer Jaw-Flat Top	✓	
	MP332 Shear Jaw-Flat Top	✓	
	MP332 Tank Shear Jaw-Flat Top	✓*	
	MP332 Universal Jaw-Flat Top	✓	
	MP345 Concrete Cutter Jaw	✓*	✓*
	MP345 Demolition Jaw		✓*
MP345 Pulverizer Jaw		✓*	
MP345 Shear Jaw	✓*	✓*	
Demolition and Sorting Grapples	G345	✓	✓
	G345 Flat Top	✓	✓
Pulverizers	P232 Secondary Pulverizer	✓	
	P332 Primary Pulverizer	✓	
	P332 Primary Pulverizer-Flat Top	✓	

### BOOM-MOUNT ATTACHMENTS

Undercarriage		Long Fixed Gauge Undercarriage	
Counterweight		9.0 mt (19,842 lb)	
Boom Type		Reach	Mass
Mobile Scrap and Demolition Shears	S2090	✓	✓
	S3070 Flat Top	✓	
	S3090 Flat Top	✓*	

# 350 Hydraulic Excavator Specifications

## Attachments Offering Guide – North America

Not all Attachments are available in all regions. Consult your Cat dealer for configurations available in your region.

Match    
  \* Working range front only    
  No Match    
  1800 kg/m<sup>3</sup> (3,000 lb/yd<sup>3</sup>)    
  1200 kg/m<sup>3</sup> (2,000 lb/yd<sup>3</sup>)

### PIN-ON ATTACHMENTS

Undercarriage		Long Fixed Gauge Undercarriage			
Counterweight		9.0 mt (19,842 lb)			
Boom Type		Reach		Mass	
Stick Length		3.35 m (11'0")	3.9 m (12'10")	2.5 m (8'2")	3.0 m (9'10")
Hydraulic Hammers	H160 S	✓	✓	✓	✓
	H180 GC	✓	✓	✓	✓
	H180 GC S	✓	✓	✓	✓
	H180 S	✓	✓	✓	✓
	H190 S	✓	✓*	✓	✓
Multi-Processors	MP332 Concrete Cutter Jaw	✓	✓		
	MP332 Demolition Jaw	✓	✓		
	MP332 Pulverizer Jaw	✓	✓		
	MP332 Shear Jaw	✓	✓		
	MP332 Tank Shear Jaw	✓	✓		
	MP332 Universal Jaw	✓	✓		
	MP332 Concrete Cutter Jaw-Flat Top	✓	✓		
	MP332 Demolition Jaw-Flat Top	✓	✓		
	MP332 Pulverizer Jaw-Flat Top	✓	✓		
	MP332 Shear Jaw-Flat Top	✓	✓		
	MP332 Tank Shear Jaw-Flat Top	✓	✓		
	MP332 Universal Jaw-Flat Top	✓	✓		
	MP345 Concrete Cutter Jaw	✓	✓	✓	✓
	MP345 Demolition Jaw	✓	✓	✓	✓
	MP345 Pulverizer Jaw	✓	✓	✓	✓
	MP345 Shear Jaw	✓	✓	✓	✓
	MP345 Concrete Cutter Jaw-Flat Top	✓	✓	✓	✓
	MP345 Demolition Jaw-Flat Top	✓	✓*	✓	✓
	MP345 Pulverizer Jaw-Flat Top	✓	✓*	✓	✓
MP345 Shear Jaw-Flat Top	✓	✓	✓	✓	
Demolition and Sorting Grapples	G345	✓	✓	✓	✓
	G345 Flat Top	✓	✓	✓	✓
Mobile Scrap and Demolition Shears	S3050 Flat Top	✓*		✓	✓
Pulverizers	P232 Secondary Pulverizer	✓	✓		
	P245 Secondary Pulverizer	✓*		✓	✓*
	P332 Primary Pulverizer	✓	✓		
	P332 Primary Pulverizer-Flat Top	✓	✓		
	P345 Primary Pulverizer	✓	✓	✓	✓
	P345 Primary Pulverizer-Flat Top	✓*		✓	✓
Rotary Cutters	RC50	✓	✓	✓	✓
Orange Peel Grapples	GSH455-1000	●	●		
	GSH455-1500	●	●		
	GSH455-2000	○	○		
	GSH555-1000	●	●		
	GSH555-1500	●	○		
Clamshell Grapples	CTV30-1900	○	○		
	CTV30-2300	○			
	CTV30-2500	○			

(continued on next page)

# 350 Hydraulic Excavator Specifications

## Attachments Offering Guide – North America (continued)

Not all Attachments are available in all regions. Consult your Cat dealer for configurations available in your region.

Match     
  \* Working range front only     
  † Allowed usage on machine less than 50%     
  No Match

### CAT PIN GRABBER COUPLER ATTACHMENTS

Undercarriage		Long Fixed Gauge Undercarriage			
Counterweight		9.0 mt (19,842 lb)			
Boom Type		Reach		Mass	
Stick Length		3.35 m (11'0")	3.9 m (12'10")	2.5 m (8'2")	3.0 m (9'10")
Hydraulic Hammers	H160 S	✓	✓	✓	✓
	H180 GC	✓		✓	✓*
	H180 GC S	✓	✓	✓	✓
	H180 S	✓†		✓	✓
Multi-Processors	MP332 Concrete Cutter Jaw	✓	✓		
	MP332 Demolition Jaw	✓	✓		
	MP332 Pulverizer Jaw	✓	✓		
	MP332 Shear Jaw	✓	✓		
	MP332 Tank Shear Jaw	✓	✓		
	MP332 Universal Jaw	✓	✓		
	MP332 Concrete Cutter Jaw-Flat Top	✓	✓		
	MP332 Demolition Jaw-Flat Top	✓	✓		
	MP332 Pulverizer Jaw-Flat Top	✓	✓		
	MP332 Shear Jaw-Flat Top	✓	✓		
	MP332 Tank Shear Jaw-Flat Top	✓			
	MP332 Universal Jaw-Flat Top	✓	✓		
	MP345 Concrete Cutter Jaw			✓	
	MP345 Demolition Jaw			✓*	
	MP345 Pulverizer Jaw			✓*	
	MP345 Shear Jaw	✓*		✓	
MP345 Concrete Cutter Jaw-Flat Top			✓*		
MP345 Shear Jaw-Flat Top			✓*		
Demolition and Sorting Grapples	G345	✓	✓	✓	✓
	G345 Flat Top	✓	✓	✓	✓
Pulverizers	P232 Secondary Pulverizer	✓	✓		
	P332 Primary Pulverizer	✓	✓		
	P332 Primary Pulverizer-Flat Top	✓	✓		
	P345 Primary Pulverizer			✓	
Rotary Cutters	RC50	✓	✓	✓	✓

### BOOM-MOUNT ATTACHMENTS

Undercarriage		Long Fixed Gauge Undercarriage	
Counterweight		9.0 mt (19,842 lb)	
Boom Type		Reach	Mass
Mobile Scrap and Demolition Shears	S2090	✓	✓
	S3070 Flat Top	✓	
	S3090 Flat Top	✓*	

# 350 Hydraulic Excavator Specifications

## Attachments Offering Guide – Chile and Colombia

Not all Attachments are available in all regions. Consult your Cat dealer for configurations available in your region.

Match

\* Working range front only

No Match

### PIN-ON ATTACHMENTS

Undercarriage		Long Fixed Gauge Undercarriage	
Counterweight		9.0 mt (19,842 lb)	
Boom Type		Mass	
Stick Length		2.5 m (8'2")	3.0 m (9'10")
Hydraulic Hammers	H160 S	✓	✓
	H180 GC	✓	✓
	H180 GC Side Mount	✓	✓
	H180 GC S	✓	✓
	H180 S	✓	✓
	H190 S	✓	✓
Multi-Processors	MP345 Concrete Cutter Jaw	✓	✓
	MP345 Demolition Jaw	✓	✓
	MP345 Pulverizer Jaw	✓	✓
	MP345 Shear Jaw	✓	✓
	MP345 Concrete Cutter Jaw-Flat Top	✓	✓
	MP345 Demolition Jaw-Flat Top	✓	✓
	MP345 Pulverizer Jaw-Flat Top	✓	✓
	MP345 Shear Jaw-Flat Top	✓	✓
Demolition and Sorting Grapples	G345	✓	✓
	G345 Flat Top	✓	✓
Pulverizers	P245 Secondary Pulverizer	✓	✓*
	P345 Primary Pulverizer	✓	✓
	P345 Primary Pulverizer-Flat Top	✓	✓*
Mobile Scrap and Demolition Shears	S3050 Flat Top	✓	✓

### CAT PIN GRABBER COUPLER ATTACHMENTS

Undercarriage		Long Fixed Gauge Undercarriage	
Counterweight		9.0 mt (19,842 lb)	
Boom Type		Mass	
Stick Length		2.5 m (8'2")	3.0 m (9'10")
Hydraulic Hammers	H160 S	✓	✓
	H180 GC	✓*	✓
	H180 GC Side Mount	✓*	
	H180 GC S	✓	✓
	H180 S	✓	✓
Multi-Processors	MP345 Concrete Cutter Jaw	✓	
	MP345 Demolition Jaw	✓*	
	MP345 Pulverizer Jaw	✓*	
	MP345 Shear Jaw	✓	
	MP345 Shear Jaw-Flat Top	✓*	
Demolition and Sorting Grapples	G345	✓	✓
	G345 Flat Top	✓	✓
Rotary Cutters	RC50	✓	✓

(continued on next page)

# 350 Hydraulic Excavator Specifications

## Attachments Offering Guide – Chile and Colombia *(continued)*

Not all Attachments are available in all regions. Consult your Cat dealer for configurations available in your region.

Match       \* Working range front only       No Match

### CW-55 DEDICATED COUPLER ATTACHMENTS

Undercarriage		Long Fixed Gauge Undercarriage	
Counterweight		9.0 mt (19,842 lb)	
Boom Type		Mass	
Stick Length		2.5 m (8'2")	3.0 m (9'10")
Hydraulic Hammers	H160 S	✓	✓
	H180 GC	✓	✓
	H180 GC S	✓	✓
	H180 S	✓	✓
	H190 S	✓*	
Multi-Processors	MP345 Concrete Cutter Jaw	✓	✓*
	MP345 Demolition Jaw	✓	✓*
	MP345 Pulverizer Jaw	✓	✓*
	MP345 Shear Jaw	✓	✓*
	MP345 Concrete Cutter Jaw-Flat Top	✓	
	MP345 Demolition Jaw-Flat Top	✓*	
	MP345 Pulverizer Jaw-Flat Top	✓*	
Demolition and Sorting Grapples	G345	✓	✓
	G345 Flat Top	✓	✓
Pulverizers	P345 Primary Pulverizer	✓	
Mobile Scrap and Demolition Shears	S3050 Flat Top	✓*	
Rotary Cutters	RC50	✓	✓

### CAT PIN GRABBER COUPLER ATTACHMENTS

Undercarriage		Long Fixed Gauge Undercarriage	
Counterweight		9.0 mt (19,842 lb)	
Boom Type		Mass	
Mobile Scrap and Demolition Shears	S2090		✓

*(continued on next page)*

## Standard and Optional Equipment

Standard and optional equipment may vary. Consult your Cat® dealer for details.

	Standard	Optional		Standard	Optional
<b>BOOMS, STICKS AND LINKAGES</b>			<b>ELECTRICAL SYSTEM</b>		
6.55 m (21'6") Mass boom		✓	Maintenance-free 1,000 CCA batteries (×2)	✓	
6.9 m (22'8") Reach boom		✓	Centralized electrical disconnect switch	✓	
2.5 m (8'2") Mass stick		✓	LED exterior chassis and boom lights	✓	
3.0 m (9'10") Mass stick		✓	Premium surround working lights		✓
2.9 m (9'6") Reach stick		✓	<b>ENGINE</b>		
3.35 m (11'0") Reach stick		✓	115 Amp alternator	✓	
3.9 m (12'10") Reach stick		✓	Cold start block heaters		✓
UB family bucket linkage with lifting eye		✓	Three selectable modes: Power, Smart, Eco	✓	
TB family bucket linkage with lifting eye		✓	Auto engine speed control	✓	
<b>CAT TECHNOLOGY</b>			52° C (126° F) high-ambient cooling	✓	
Cat Equipment Management:			Hydraulic reverse fan	✓	
– VisionLink™	✓ <sup>2</sup>		–18° C (0° F) cold start capability	✓	
– Remote Flash	✓		–32° C (–25° F) cold start capability		✓
– Remote Troubleshoot	✓		Double element air filter with integrated pre-cleaner	✓	
– Work tool recognition and tracking (PL161)	✓		Dual stage four micron main filter	✓	
– Operator Coaching		✓ <sup>3</sup>	10 micron primary filter with water separator	✓	
Cat Grade:			Electric fuel priming pump	✓	
– Cat Grade with 2D	✓ <sup>1</sup>		Secure start with PIN code	✓	
– Cat Grade with 2D with Attachment Ready Option (ARO)		✓	Remote disable	✓	
– Laser catcher		✓	<sup>1</sup> Optional in Chile, Colombia and Türkiye.		
– Cat Grade with 3D (single or dual Global Navigation Satellite System [GNSS])		✓	<sup>2</sup> Provides core telematics data to manage health, maintenance insights, and condition monitoring. Other plans available for more comprehensive data reporting. Consult your Cat dealer for details.		
– Compatible with 3D grade systems from Trimble, Topcon, and Leica	✓ <sup>1</sup>		<sup>3</sup> VisionLink subscription required. Consult your Cat dealer for details.		
– Cat Grade 3D Ready		✓	<i>(continued on next page)</i>		
– Cat Grade Connectivity		✓ <sup>3</sup>			
Cat Assist:					
– Grade Assist	✓ <sup>1</sup>				
– Boom Assist	✓ <sup>1</sup>				
– Bucket Assist	✓ <sup>1</sup>				
– Swing Assist	✓ <sup>1</sup>				
– Lift Assist	✓ <sup>1</sup>				
Cat Payload:					
– On-the-go weighing	✓ <sup>1</sup>				
– Semiautomatic calibration	✓ <sup>1</sup>				
– Payload/cycle information	✓ <sup>1</sup>				
Other:					
Cat Tiltrotator (TRS) integration		✓			

# 350 Standard and Optional Equipment

## Standard and Optional Equipment (continued)

Standard and optional equipment may vary. Consult your Cat dealer for details.

	Standard	Optional		Standard	Optional
<b>HYDRAULIC SYSTEM</b>			<b>SERVICE AND MAINTENANCE</b>		
Boom and stick regeneration circuit	✓		Integrated vehicle health management system	✓	
Electronic main control valve	✓		Grouped engine oil and fuel filters	✓	
Auto hydraulic oil warmup	✓		S·O·S <sup>SM</sup> ports	✓	
Auto dig boost	✓ <sup>1</sup>		Electric refueling pump with auto shutoff	✓ <sup>7</sup>	
Auto heavy lift	✓		QuickEvac <sup>TM</sup> maintenance ready		✓
Bio hydraulic oil capability	✓		<b>UNDERCARRIAGE AND STRUCTURES</b>		
Fine swing	✓ <sup>2</sup>	✓ <sup>3</sup>	Long undercarriage	✓	
Reverse swing damping valve	✓		Towing eye on base frame	✓	
Auto swing parking brake	✓		Full-length track guiding guards		✓
High performance hydraulic return filter	✓		Segmented two-piece track guiding guards		✓
Two speed travel	✓		Swivel guard	✓	
Combined two-way auxiliary circuit		✓	HD bottom guard	✓	
Medium-pressure auxiliary circuit		✓	HD travel motor guards	✓	
Quick coupler circuit for Cat Pin Grabber		✓	Grease lubricated track	✓	
Quick coupler circuit for CW dedicated		✓	HD swing frame	✓	
Hydraulic efficiency monitoring		✓	HD swing bearing	✓	
<b>SAFETY AND SECURITY</b>			9.0 mt (19,842 lb) counterweight	✓	
2D E-Fence:	✓ <sup>1</sup>		600 mm (24") double grouser, HD double grouser track shoes		✓
– E-ceiling			750 mm (30") triple grouser shoes		✓
– E-floor			900 mm (35") triple grouser shoes		✓
– E-swing					
– E-wall					
– E-cab avoidance					
Auto hammer stop	✓				
Caterpillar One Key security system	✓				
Lockable external tool/storage box	✓				
Lockable door, fuel, and hydraulic tank locks	✓				
Lockable fuel drain compartment	✓				
Service platform with anti-skid plate and recessed bolts	✓				
Right Hand (RH) handrail and handhold	✓				
Signaling/warning horn	✓				
Travel alarm	✓ <sup>3</sup>				
Swing alarm		✓			
Ground-level secondary engine shutoff switch	✓				
Lockable disconnect switch	✓				
Boom lowering check valve	✓ <sup>4</sup>	✓ <sup>5</sup>			
Stick lowering check valve	✓ <sup>4</sup>	✓ <sup>5</sup>			
Rearview camera	✓				
Right-hand-sideview camera	✓				
360° visibility		✓			
Inspection lighting		✓			

<sup>1</sup>Optional in Chile, Colombia and Türkiye

<sup>2</sup>Standard in North America, Australia and New Zealand

<sup>3</sup>Optional in Europe

<sup>4</sup>Standard in Europe, Australia and New Zealand

<sup>5</sup>Optional in North America and Türkiye

<sup>6</sup>North America only

<sup>7</sup>Available in Europe only

## Dealer Installed Kits and Attachments

Attachments may vary. Consult your Cat dealer for details.

---

<b>CAB</b> <ul style="list-style-type: none"><li>• Radial lower wiper</li><li>• Left Hand (LH)/RH electrical pedal for tool control</li><li>• Dual exit rear window kit</li><li>• Rain protector plus cab light cover</li><li>• 75 mm (3") retractable seat belt</li></ul>	<b>ELECTRICAL</b> <ul style="list-style-type: none"><li>• Premium surround working lights</li></ul> <b>GUARDS</b> <ul style="list-style-type: none"><li>• Side rubber bumper guard</li><li>• Mesh guard full front</li><li>• Mesh guard half front</li><li>• Full protecting vandalism guard</li></ul>	<b>SAFETY AND SECURITY</b> <ul style="list-style-type: none"><li>• Bluetooth® receiver kit</li><li>• Bluetooth key fob</li><li>• Operator Protective Guards</li><li>• Cat Detect – People Detection</li><li>• Cat Command – Remote control kit</li></ul>
--	--	--

# 350 Cab Options

## Cab Options

	Deluxe	Premium
ROPS	●	●
Operator Protective Guards (OPG)	○	○
High-resolution 203 mm (8") LCD touchscreen monitor	●	X
High-resolution 254 mm (10") LCD touchscreen monitor	○	●
Auto bi-level air conditioner	●	●
Jog dial and shortcut keys for monitor control	●	●
Keyless push-to-start engine control	●	●
Height-adjustable console	●	●
Tilt-up left-side console	●	●
Heated air-suspension seat	●	X
Heated and ventilated air-suspension seat	X	●
51 mm (2") seat belt	●	●
Monitor integrated Bluetooth radio with USB/Auxiliary ports	●	●
12V DC outlets	●	●
Document storage	●	●
Overhead storage and rear storage with nets	●	●
Beverage holder	●	●
Cup holder	●	●
Openable two-piece front window	●	●
One-piece front windshield	X	○
Rear window emergency exit	●	●
Radial wiper with washer	●	X
Parallel wiper	X	●
Openable polycarbonate skylight hatch	●	●
LED dome light	●	●
Floor welcome light	●	●
Roof sunscreen	●	●
Roller front sunscreen	●	●
Roller rear sunscreen	○	●
Washable floor mat	●	●
Beacon ready	●	●
Cat Stick Steer	○	○
Auxiliary relay	○	○

● Standard

○ Optional

X Not Available

The following information applies to the machine at the time of final manufacture as configured for sale in the regions covered in this document. The content of this declaration is valid as of the date issued; however, content related to machine features and specifications are subject to change without notice. For additional information, please see the machine's Operation and Maintenance Manual.

For more information on sustainability in action and our progress, please visit <https://www.caterpillar.com/en/company/sustainability>.

## Engine

- The Cat® C9.3B engine meets U.S. EPA Tier 4 Final, EU Stage V, and Japan 2014 emission standards.
- Cat diesel engines are required to use ULSD (ultra-low sulfur diesel fuel with 15 ppm of sulfur or less) and are compatible\* with ULSD blended with the following lower-carbon intensity fuels\*\* up to:
  - ✓ 20% biodiesel FAME (fatty acid methyl ester)\*\*\*
  - ✓ 100% renewable diesel, HVO (hydrotreated vegetable oil) and GTL (gas-to-liquid) fuels

Refer to guidelines for successful application. Please consult your Cat dealer or “Caterpillar Machine Fluids Recommendations” (SEBU6250) for details.

\* While Cat engines are compatible with these alternative fuels, some regions may not allow their use.

\*\* Tailpipe greenhouse gas emissions from lower-carbon intensity fuels are essentially the same as traditional fuels.

\*\*\* Engines with no aftertreatment devices are compatible with higher blends, up to 100% biodiesel (for use of blends higher than 20% biodiesel, consult your Cat dealer).

## Air Conditioning System

The air conditioning system on this machine contains the fluorinated greenhouse gas refrigerant R134a or R1234yf. See the label or instruction manual for identification of the gas.

- If equipped with R134a (Global Warming Potential = 1430), the system contains 1.000 kg (2.205 lb.) of refrigerant, which has a CO<sub>2</sub> equivalent of 1.430 metric tonnes (1.576 tons).
- If equipped with R1234yf (Global Warming Potential = 0.501), the system contains 0.810 kg (1.786 lb.) of refrigerant, which has a CO<sub>2</sub> equivalent of 0.001 metric tonnes (0.001 tons).

## Paint

- Based on best available knowledge, the maximum allowable concentration, measured in parts per million (PPM), of the following heavy metals in paint are:
  - Barium < 0.01%
  - Cadmium < 0.01%
  - Chromium < 0.01%
  - Lead < 0.01%

## Sound Performance

ISO 6395:2008 (external)	107 dB(A)
ISO 6396:2008 (inside cab)	75 dB(A)

- External Sound – The spectator sound power level is measured according to the test procedures and conditions specified in ISO 6395:2008 for a Caterpillar machine that is properly equipped and maintained. The measurements were conducted at 70% of the maximum engine cooling fan speed.
- Internal Sound – The operator sound pressure level is measured according to the test procedures and conditions specified in ISO 6396:2008 for a cab offered by Caterpillar, when properly installed and maintained and tested with the door and windows closed. The measurements were conducted at 70% of the maximum engine cooling fan speed.
- Hearing protection may be needed when operating with an open operator station and cab (when not properly maintained for doors/windows open) for extended periods or in noisy environment(s).

## Oils and Fluids

- Caterpillar factory fills with ethylene glycol coolants. Cat Diesel Engine Antifreeze/Coolant (DEAC) and Cat Extended Life Coolant (ELC) can be recycled. Consult your Cat dealer for more information.
- Cat Bio HYDO™ Advanced is an EU Ecolabel approved biodegradable hydraulic oil.
- Additional fluids are likely to be present, please consult the Operations and Maintenance Manual or the Application and Installation guide for complete fluid recommendations and maintenance intervals.

## Features and Technology

- The following features and technology may contribute to fuel savings and/or carbon reduction. Features may vary. Consult your Cat dealer for details.
  - Advanced hydraulic systems balance power and efficiency
  - Smart mode matches machine power to digging requirements automatically
  - Eco mode supports reduced fuel consumption for light applications
  - Remotely monitor fuel consumption, machine health, location, and hours on demand through Product Link™ and VisionLink™
  - Extended service intervals help decrease maintenance costs

For more complete information on Cat products, dealer services, and industry solutions, visit us on the web at [www.cat.com](http://www.cat.com)

© 2025 Caterpillar  
All rights reserved

Materials and specifications are subject to change without notice. Featured machines in photos may include additional equipment. See your Cat dealer for available options.

CAT, CATERPILLAR, LET'S DO THE WORK, VisionLink, their respective logos, "Caterpillar Corporate Yellow," the "Power Edge" and Cat "Modern Hex" trade dress as well as corporate and product identity used herein, are trademarks of Caterpillar and may not be used without permission.

AEXQ4062-01 (12-2025)  
Replaces AEXQ4062-00  
Build Number: 06D  
(Aus-NZ, Chile, Colombia,  
N Am, Türkiye)

